

PORTABLE SOUND

2018-2019





- Security and Emergency systems
- EN 54-16 · Conference systems & Intercom systems · Microphones
- Preamplifier equipment · Control equipment · Power amplifiers
- Integrated amplifiers · Music sources · Ceiling speakers · Sound projectors · EN 54-24 speakers
- Spherical diffusers · Speaker systems · Column speakers
- Weatherproof speakers

- Variable curvature line array
- Constant curvature line array
- Column line array · Point source
- Subwoofer · Monitor · Digital loudspeaker management
- Power amplifier · Accessories

- Line array systems · Speaker systems
- Subwoofer · Monitor · Integrated sound systems · Digital loudspeaker management · Power amplifier
- Accessories



since 1963 - Made in Italy

5 **Ventis**

ACTIVE	SPEAKER 115A 700+200W RMS 133dB SPL	112A 700+200W RMS 133dB SPL	110A 700+200W RMS 131dB SPL	108A 700+200W RMS 131dB SPL	206A 700+200W RMS 131dB SPL
PASSIVE	115 500W RMS 130dB SPL	112 400W RMS 132dB SPL	110 300W RMS 127dB SPL	108 250W RMS 126dB SPL	206 400W RMS 127dB SPL

ACTIVE	MONITOR 115MA 700+200W RMS 133dB SPL	112MA 700+200W RMS 133dB SPL
PASSIVE	115M 500W RMS 133dB SPL	112M 500W RMS 126dB SPL

13 **X-PRO X-SUB**

ACTIVE	SPEAKER 215A 1600W RMS 132dB SPL	15A 1000W RMS 128dB SPL	12A 1000W RMS 127dB SPL	10A 1000W RMS 126dB SPL
PASSIVE	15 400W RMS 126dB SPL	12 300W RMS 125dB SPL	10 250W RMS 123dB SPL	

ACTIVE	SUB 18SA 1200W RMS 136dB SPL	15SA 1200W RMS 136dB SPL
--------	---	---------------------------------------

19 **Vertus**

ACTIVE	ARRAY CLA 604A 400+100W RMS 125dB SPL	CLA 208SA 600W RMS 129dB SPL	CS1000 600+400W RMS 129dB SPL
--------	--	---	--

27 **Subline**

ACTIVE	SUB 218SA 1200W RMS 143dB SPL	118SA 1200W RMS 137dB SPL	115SA 600W RMS 135dB SPL	112SA 600W RMS 135dB SPL
PASSIVE	218S 1200W RMS 143dB SPL	118S 1200W RMS 136dB SPL	115S 700W RMS 135dB SPL	112S 700W RMS 133dB SPL

31 **StageMaxX**

ACTIVE	MONITOR 12MA 400+100W RMS 130dB SPL
--------	--

35 **HiMaxX**

ACTIVE	SPEAKER 60A 1100+250W RMS 134dB SPL	40A 1000+250W RMS 133dB SPL	SUB 100SA 1200W RMS 139dB SPL
PASSIVE	60 700W RMS 132dB SPL	40 500W RMS 131dB SPL	

43 **ProMaxX**

ACTIVE	SPEAKER 114A 700+200W RMS 135,5dB SPL	112A 700+200W RMS 133dB SPL	110A 700+200W RMS 131dB SPL	SUB 15SA 1100+250W RMS 134dB SPL
PASSIVE	114 700W RMS 132dB SPL	112 400W RMS 129dB SPL	110 300W RMS 127dB SPL	

49 **Evo²MaxX**

ACTIVE	SPEAKER 6A 400+100W RMS 130dB SPL	4A 400+100W RMS 130dB SPL	2A 400+100W RMS 128dB SPL
PASSIVE	6 400W RMS 130dB SPL	4 300W RMS 128dB SPL	2 250W RMS 125dB SPL

55 **J**

ACTIVE	SPEAKER 15A 350+100W RMS 129dB SPL	12A 350+50W RMS 128dB SPL	8A 200+50W RMS 124dB SPL	5A 80+40W RMS 117dB SPL	5T 50W RMS 114dB SPL
PASSIVE	15 300W RMS 127dB SPL	12 300W RMS 127dB SPL	8 160W RMS 121,5dB SPL	5 80W RMS 117dB SPL	

61 **X-LITE**

ACTIVE	SPEAKER 15A 1000W RMS 128dB SPL	12A 1000W RMS 127dB SPL	10A 1000W RMS 126dB SPL
PASSIVE	15 400W RMS 126dB SPL	12 300W RMS 125dB SPL	10 300W RMS 125dB SPL

67 **Amico**

ACTIVE	INTEGRATED SOUND SYSTEMS	10USB 500+2x150W RMS 130dB SPL
--------	---------------------------------	---

71 **AX Series**

POWER AMPLIFIERS	AX 3000	AX 2000	AX 1200	AX 800
------------------	----------------	----------------	----------------	---------------

72 **DMM 8008**

DIGITAL MATRIX	DMM8008
----------------	----------------

74 **DLM26**

DIGITAL LOUDSPEAKER MANAGEMENT	DLM 26
--------------------------------	---------------

76 **Accessories**

SPEAKER | 5
SYSTEM

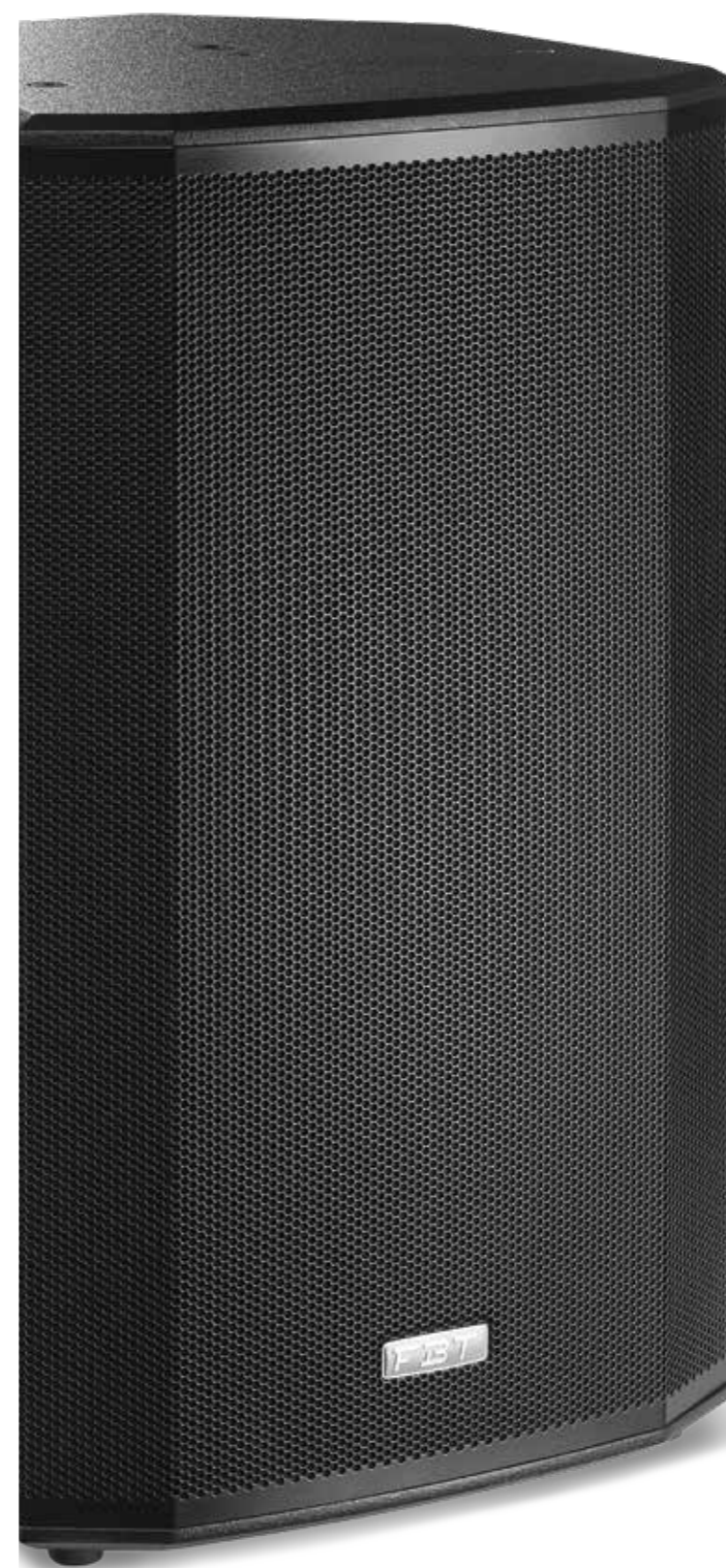
HISTORY, EXPERIENCE
AND INNOVATION
IN TRADITION.
MADE IN ITALY.

Since 1963, FBT designs and builds sound in Recanati, a small city located in the centre of Italy, a city of Poetry, of Art, of Music, from immemorial time the soundtrack for entire generations.



IN FBT EVERY DEPARTMENT
IS A COMPANY
IN THE COMPANY
WHOSE AIM IS TO MAKE
QUALITY WITHIN
THE ENERGY OF SOUND.

A technological know-how that extends from research to planning, from electronics to design, from wood to metal, from plastics to painting. A highly innovative product and a manufacturing process determined by a strict final electronic testing.



Ventis

THE VENTIS RANGE FROM FBT COMPRISES FIVE VERSATILE LOUDSPEAKER ENCLOSURES FOR EITHER PORTABLE USE OR FIXED INSTALLATION



Designed to meet the highest standards in both performance and aesthetic appeal

Available in either passive or bi-amplified versions, each of the models - **the VENTIS 115, 112, 110, 108 and 206** - has been designed to meet the highest standards in both performance and aesthetic appeal. For the VENTIS range, quality and flexibility are the watchwords. Based on a powerful combination of B&C compression drivers and FBT's own custom, long excursion woofers, the 115, 112, 110 and 108 models are two-way, bass reflex designs housed in 15mm birch plywood. A full-grille design backed by specially treated acoustic cloth delivers the characteristic style for which FBT is known, while fully rotatable constant directivity horns ensure accurate coverage.

The five enclosures are as suitable for fixed installation as they are for use on the stage. M10 points are included as standard while an optional U-bracket can be used for wall-mounting. For use on the road, the VENTIS models include aluminum handles with rubber inserts, a 35mm polemount socket, and a 45° sloped profile for unobtrusive placement on-stage as a monitor.

Meanwhile the multi-purpose **VENTIS 206 can be deployed as a front fill, an under-balcony fill, as a main providing pristine speech intelligibility or simply as the full-range companion of a subwoofer.** Constructed in 12mm birch plywood, the 206 has an integrated rear handle, an optional mounting bracket and, most importantly, an astonishing size to SPL ratio.

The new coaxial monitors in bass reflex **Ventis 112MA and Ventis 115MA** expand the active and passive range of the series. Thanks to the B&C custom transducers they are capable of a 132dB SPL. The two enclosures are built with a 15mm birch plywood and they can also be used for fixed installation and FOH thanks to 35mm pole mount socket and to the inserts for optional mounting bracket.

Power for the active **VENTIS** models comes courtesy of a specially designed, Italian made switching mode amplifier module. Low frequencies are driven by a highly efficient 700W RMS (full bridge) Class-D topology, operating with extremely low THD. For the HF stage, a 200W RMS performance is delivered via a meticulously crafted Class-H / AB design.

Finally, DSP on-board the VENTIS enclosures is both user friendly and powerful. Located on the rear of each enclosure, a menu-driven system is navigated via a single rotary control with push-to-select functionality. A total of 6 pre-optimised settings are available (see below), plus 2 further slots for users to form their own designs, using 5 parametric equalizers per slot. Also available is a high-pass filter, a mic/line selector, low, mid and high tone settings and an optional delay of between 0 and 3.5 metres. Finally, users can exclusively choose between two limiter modes, MAX-SPL or MAX-QUALITY, to best suit their performance.

The VENTIS Presets

The FBT VENTIS range offers powerful DSP with 6 versatile presets. Crafted by expert FBT engineers, the presets offer a performance for every requirement.

ORIGINAL / LIVE The renowned, smooth FBT sound

VOCAL A special EQ setting to maximise speech intelligibility

DJ Designed to keep the energy high and your audience dancing

TOURING The reliability and the roar of the industry's most popular touring systems

LOUDNESS The ultimate preset for listening at a medium or low volume

WARM A special setting to emphasise full-bodied, low-mid frequencies.





Ventis active

- 2-way, bi-amplified, bass reflex design
- Biamped: 700W RMS LF and 200W RMS HF power amplifiers in Class D for LF and in Class H/AB for HF
- Digital Signal Processor with graphic display
- 15 mm (0.59") birch plywood scratch resistant enclosure and internal bracing
- High efficiency switch mode power supply
- Control Panel features balanced XLR/Jack input, XLR LINK OUT, 2 x Volume, RCA Stereo input, DSP display with rotative encoder and push



Ventis 115A

Processed Active Speaker
700W + 200W RMS - 133dB SPL

- 380mm (15") LF woofer with 64mm (2.5") voice coil, custom made for FBT
- 25mm (1") exit throat B&C HF compression driver with 44mm (1.7") voice coil
- Frequency response from 42Hz to 20kHz
- 80°H x 50°V Constant Directivity rotatable Horn
- 6 x M10 suspension points, wall bracket mount thread, 35 mm (1 3/8") top-hat speaker stand socket, two aluminium handles
- 45° monitor taper

Ventis 115

Passive Reinforcement Speaker
500W/8ohm - 130dB SPL



Ventis 112A

Processed Active Speaker
700W + 200W RMS - 133dB SPL

- 320mm (12") LF woofer with 64mm (2.5") voice coil, custom made for FBT
- 25mm (1") exit throat B&C HF compression driver with 36mm (1.4") voice coil
- Frequency response from 48Hz to 20 kHz
- 80°H x 50°V Constant Directivity Rotatable Horn
- 6 x M10 suspension points, optional wall bracket mount thread, 35mm (1 3/8") top-hat
- Speaker stand socket, two aluminium handles
- 45° monitor taper

Ventis 112

Passive Reinforcement Speaker
400W/8ohm RMS - 129dB SPL



Ventis 110A

Processed Active Speaker
700W + 200W RMS - 131dB SPL

- 250mm (10") LF woofer with 50mm (2") voice coil, custom made for FBT
- 25mm (1") exit throat B&C HF compression driver with 36mm (1.4") voice coil
- Frequency response from 58Hz to 20 kHz
- 80°H x 50°V Constant Directivity Rotatable Horn
- 6 x M10 suspension points, optional wall bracket mount thread, 35mm (1 3/8") top-hat
- Speaker stand socket, one aluminium handle
- 45° monitor taper

Ventis 110

Sound Reinforcement Speaker
300W/8ohm RMS - 127dB SPL



Ventis 108A

Processed Active Speaker
700W + 200W RMS - 131dB SPL

- 2-way bi-amplified, bass-reflex design
- 200mm (8") LF woofer with 50mm (2") voice coil, custom made for FBT
- 25mm (1") exit throat B&C HF compression driver with 36mm (1.4") voice coil
- Frequency response from 65Hz to 20 kHz
- 80°H x 50°V Constant Directivity Rotatable Horn
- Optional wall bracket mount thread, 35mm (1 3/8") top-hat
- One integrated pocket handle

Ventis 108

Passive Reinforcement Speaker
250W/8ohm RMS
126dB SPL

- 4 x M5 threaded rigging points and optional mounting hardware



Ventis passive

- Built-in passive crossover with soft-trip protection for the LF woofer and HF driver
- Speakon NL-4 IN and LINK OUT connectors



Ventis active

2-way, bi-amplified, bass reflex design

Biamped: 700W RMS LF and 200W RMS HF power amplifiers in Class D for LF and in Class H/AB for HF

Digital Signal Processor with graphic display

15 mm (0.59") birch plywood scratch resistant enclosure and internal bracing

High efficiency switch mode power supply

Control Panel features balanced XLR/Jack input, XLR LINK OUT, 2 x Volume, RCA Stereo input, DSP display with rotative encoder and push



Ventis 206A

Processed Active Speaker
700W + 200W RMS - 131dB SPL

- **2x165mm (6.5") LF woofer** with **38mm (1.5")** voice coil, custom made for FBT
- **25mm (1") exit throat** B&C HF compression driver with **36mm (1.4")** voice coil
- Frequency response from **70Hz to 20 kHz**
- **70°H x 50°V** Constant Directivity Rotatable Horn
- Optional wall bracket mount thread, 35mm (1 3/8") top-hat
- One integrated handle
- 12mm (0.47") birch plywood scratch resistant enclosure and internal bracing

Ventis 206

Sound Reinforcement Speaker
400W/8ohm RMS - 127dB SPL



Ventis passive

Built-in passive crossover with soft-trip protection for the LF woofer and HF driver

Speakon NL-4 IN and LINK OUT connectors



Ventis 115MA

Processed Active Monitor
700W + 200W RMS - 132dB SPL

- 2-way bi-amplified, bass-reflex design
- **380 mm (15")** coaxial custom woofer with **64 mm (2.5")** voice coil, **25mm (1")** exit throat B&C with **44mm (1.7")** voice coil
- Frequency response from **50Hz to 20kHz**
- DSP with 6 factory presets (ORIG, HI-CUT/DRUM-FILL, LO-CUT/TWIN, FOH, VOCAL, TOURING)
- **90° conical dispersion**
- **35 mm (1.38")** stand socket, two integrated handles and optional wall mount bracket

Ventis 115M

Passive Reinforcement Monitor
500W/8ohm RMS - 130dB SPL



Ventis 112MA

Processed Active Monitor
700W + 200W RMS - 132dB SPL

- 2-way bi-amplified, bass-reflex design
- **320 mm (12")** coaxial custom woofer with **64 mm (2.5")** voice coil, **25mm (1")** exit throat B&C with **44mm (1.7")** voice coil
- Frequency response from **55Hz to 20kHz**
- DSP with 6 factory presets (ORIG, HI-CUT/DRUM-FILL, LO-CUT/TWIN, FOH, VOCAL, TOURING)
- **90° conical dispersion**
- **35 mm (1.38")** stand socket, two integrated handles and optional wall mount bracket

Ventis 112M

Passive Reinforcement Monitor
500W/8ohm RMS - 129dB SPL





Model		Ventis 115A	Ventis 112A	Ventis 110A	Ventis 108A	Ventis 206A	Ventis 115MA	Ventis 112MA
Configuration	way	2	2	2	2	2	2	2
Built-in amplifier max. rms LF/HF	W	700/200	700/200	700/200	700/200	700/200	700/200	700/200
Built-in amplifier max. peak LF/HF	W	1400/400	1400/400	1400/400	1400/400	1400/400	1400/400	1400/400
Frequency response	@-6dB	42Hz - 20KHz	48Hz - 20KHz	58Hz - 20KHz	65Hz - 20KHz	70Hz - 20KHz	50Hz - 20KHz	55Hz - 20KHz
Low frequency woofer	inch	15 - 2.5 coil	12 - 2.5 coil	10 - 2 coil	8 - 2 coil	2x6.5 - 1.5 coil	15 - 2.5 coil	12 - 2.5 coil
High frequency driver	inch	1 - 1.7 coil	1 - 1.4 coil	1 - 1.4 coil	1 - 1.4 coil	1 - 1.4 coil	1 - 1.7 coil	1 - 1.7 coil
Maximum SPL cont/peak	dB	127 / 133	126 / 133	124 / 131	123 / 131	124 / 131	127 / 133	126 / 133
Dispersion	H x V	80° x 50° rotatable	80° x 50° rotatable	80° x 50° rotatable	80° x 50° rotatable	70° x 50° rotatable	90°	90°
Input impedance	kOhm	22	22	22	22	22	22	22
AC Power requirements	VA	640	640	640	640	640	640	640
Input connectors		XLR with loop, RCA ST	XLR with loop, RCA ST	XLR with loop, RCA ST	XLR with loop, RCA ST	XLR with loop, RCA ST	XLR with loop, RCA ST	XLR with loop, RCA ST
Power cord	m/ft	5/16.4	5/16.4	5/16.4	5/16.4	5/16.4	5/16.4	5/16.4
AC Power connector		Neutrik POWERCON TRUE1	Neutrik POWERCON TRUE1	Neutrik POWERCON TRUE1	Neutrik POWERCON TRUE1	Neutrik POWERCON TRUE1	Neutrik POWERCON TRUE1	Neutrik POWERCON TRUE1
Net dimensions (WxHxD)	mm inch	427x765x420 16.81x30.11x16.53	387x665x380 12.23x26.18x14.96	329x575x325 12.95x22.63x12.79	274X485X270 10.78X19.09X10.62	190x560x260 7.48x22.04x10.23	632x354x516 24.9x11.9x20.3	563x311x452 22.2x12.2x17.8
Net weight	kg/lb	25/55.11	20.6/45.41	15.6/34.39	13.3/29.3	12/26.45	21.3/46.9	17.5/38.6
Transport dimensions (WxHxD)	mm inch	600x865x520 23.62x34.05x20.47	500x765x470 19.68x30.11x18.50	420x675x400 16.53x26.57x15.74	395X620X345 15.55X24.40X13.58	290x660x360 11.41x25.98x14.17	732x454x616 28.8x17.9x24.2	663x411x552 26.1x16.2x21.7
Transport weight	kg/lb	29/63.93	23.1/50.92	18.1/39.90	15.3/33.7	14.3/31.52	25.8/56.9	22/48.5

Model		Ventis 115	Ventis 112	Ventis 110	Ventis 108	Ventis 206	Ventis 115M	Ventis 112M
Configuration	way	2	2	2	2	2	2	2
Recommended amplifier	W rms	500	400	300	250	400	500	400
Long term power *	W	250	200	150	125	200	250	200
Short term power (IEC 268-5) **	W	1000	800	600	500	800	1000	800
Nominal impedance	Ohm	8	8	8	8	8	8	8
Frequency response	@-6dB	50Hz - 18KHz	55Hz - 18KHz	60Hz - 18KHz	70Hz - 18KHz	75Hz - 20KHz	55Hz - 18KHz	60Hz - 18KHz
Low frequency woofer	inch	15 - 2.5 coil	12 - 2.5 coil	10 - 2 coil	8 - 2 coil	2x6.5 - 1.5 coil	15 - 2.5 coil	12 - 2.5 coil
High frequency driver	inch	1 - 1.7 coil	1 - 1.4 coil	1 - 1.4 coil	1 - 1.4 coil	1 - 1.4 coil	1 - 1.7 coil	1 - 1.7 coil
Sensitivity (@1W/1m)	dB	99	98	97	95	97	99	98
Maximum SPL cont/peak	dB	126 / 130	125 / 129	122 / 127	120 / 126	123 / 127	126 / 130	125 / 129
Dispersion	H x V	80° x 50° rotatable	80° x 50° rotatable	80° x 50° rotatable	80° x 50° rotatable	70° x 50° rotatable	90°	90°
Crossover frequency	kHz	1.4	1.6	1.8	1.8	2	1.4	1.6
Recommended HP filter		40Hz - 24db/oct	45Hz - 24db/oct	50Hz - 24db/oct	50Hz - 12-24db/oct	60Hz - 24db/oct	50Hz - 12-24db/oct	50Hz - 12-24db/oct
Recommended external DSP		FBT DLM26	FBT DLM26	FBT DLM26	FBT DLM26	FBT DLM26	FBT DLM26	FBT DLM26
Input connectors		2 x SPEAKON	2 x SPEAKON	2 x SPEAKON	2 x SPEAKON	2 x SPEAKON	2 x SPEAKON	2 x SPEAKON
Net dimensions (WxHxD)	mm inch	427x765x420 16.81x30.11x16.53	387x665x380 12.23x26.18x14.96	329x575x325 12.95x22.63x12.79	274X485X270 10.78X19.09X10.62	190x560x260 7.48x22.04x10.23	632x354x516 24.9x11.9x20.3	563x311x452 22.2x12.2x17.8
Net weight	kg/lb	24.5/54.01	20.1/44.31	15.1/33.28	12.3/27.1	11.8/26.01	20.3/44.7	16.5/36.4
Transport dimensions (WxHxD)	mm inch	600x865x520 23.62x34.05x20.47	500x765x470 19.68x30.11x18.50	420x675x400 16.53x26.57x15.74	395x620x375 15.5x24.4x14.7	290x660x360 11.41x25.98x14.17	732x454x616 28.8x17.9x24.2	663x411x552 26.1x16.2x21.7
Transport weight	kg/lb	28.5/2.83	22.6/49.82	17.6/38.80	14.3/31.5	13.8/30.42	24.8/54.7	21/46.3

Accessories page 76	Ventis 115	Ventis 112	Ventis 110	Ventis 108A	Ventis 108	Ventis 206	Ventis 115M	Ventis 112M
Nylon cover	VN-C 115 40720	VN-C 112 40721	VN-C 110 40722	VN-C 108A 41204	VN-C 108 41205	VN-C 206 40723	VN-C 115M 41207	VN-C 112M 41206
Wall metal bracket to mount in horizontal position	VN-U 115 40724	VN-U 112 40725	VN-U 110 40726	VN-U 108 41220	VN-U 108 41220	VN-U 206 40727		
Directional wall mount bracket					AC-W 568/W 41207 37330 Bianco			

SPEAKER SYSTEM



X-PRO X-SUB

X-PRO AND X-SUB AIM FOR SUCCESS!

No matter whether you're performing on stage, delivering a business presentation or designing the highest quality fixed installation, you want to leave an indelible mark on your audience. That's when FBT's new **X-PRO** series of powered speakers can help you make a difference. Constructed out of plywood enclosures finished with extra-texture paint, the **X-PRO** series is cut to withstand tour-tough conditions with Italian elegance and style. Professional features include ergonomic handles, M10 flying points, a monitor taper design, and a full protective grille. Meanwhile the onboard Class D amplifier module delivers an amazing 1000W power with a flexible DSP to allow personal EQ adjustments, while the low frequency response can be extended courtesy of the dedicated X-SUB 18" AND 15" powered subwoofers. Now the range, which already includes both active and passive 10", 12" and single 15" models, has been expanded with the bi-amplified X-PRO 215A, a two-way bi-amplified system rated at 1600W (Class D) + 200W (Class AB) to deliver 129 / 132dB SPL.

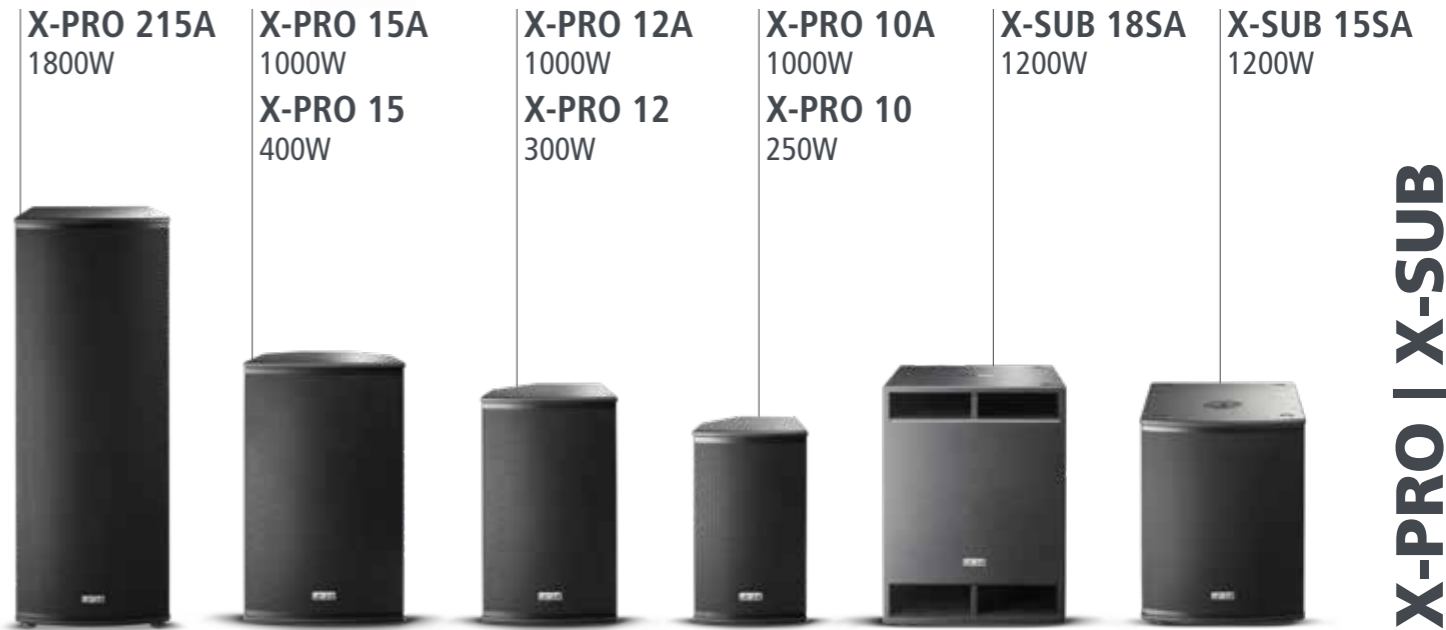


Designed as the perfect partner for the **X-LITE** and **X-PRO** series, FBT introduces the new **X-SUB 15SA** powered subwoofer. Loaded with a single 15" heavy duty woofer, the **X-SUB 15SA** is controlled by a 1200W Class D amplifier with DSP at 6 presets allowing perfect tailoring of the extended low frequency to the midhigh.

The rugged plywood enclosure is built to withstand touring conditions, yet crafted with Italian style to suit the most elegant fixed installations. Finally, the M20 thread allows for pole mounting on a 3-way system design.



Handles, **M10 rigging points** for suspended installation, 35mm stand socket and 35° or 45° monitor taper, all included to make the speaker adaptable to any application



X-PRO and X-SUB The professional's choice

X-PRO Series common features

- Plywood cabinet with anti-scratch coating and an internal ply reinforcement
- **Custom FBT Speakers** with high linear excursion capability and efficiency
- Compression driver with 25mm (1") throat and 35mm (1.4") voice coil
- 1000W, 2-channel amplifier in Class D for **LF** and in **Class AB** for HF with a high dynamics response for a pleasant sound at high volume
- Universal switching mode power supply 100-240VAC
- **DSP with 4 EQ presets** designed to tailor the sound of the speaker to various applications and installation environments
- Advanced algorithms for filtering and equalization which alter the dynamics of the low frequency energy according to the selected preset, allowing distortion-free high SPL performance
- Control panel with XLR input and link out, 6.3mm jack stereo input with volume, stereo RCA input with volume, XLR output selector coupled with stereo / mono, HP filter on / off, mic / line, DSP preset selector
- Integrated mixer with two stereo channels, one channel mic / line input and an output coupled XLR mono / stereo to revive the

other channel of the stereo signal to another speaker.

- Constant directivity horn which can be rotated to vary the speaker's angle of coverage

The presence of 4 presets managed by DSP allows you to modify the response of the speaker in a much more accurate way compared to standard tone controls. In addition, each preset has been designed and optimized in an anechoic chamber to deliver the best possible performance for each application.

- **ORIGINAL / LIVE:** The ideal preset for live sound reinforcement
- **FLOOR / VOCAL:** A preset to transform your X-PRO cabinet for use as a stage monitor or for vocals
- **CLUB:** A special preset to deliver a rich, deep bass response that stays easy on listener's ears
- **DJ:** A preset designed to bring out the best in electronic dance music



Monitor 35°



X-PRO 215A

Processed Active Speaker
1600 + 200W RMS - 129/132dB SPL

- 2-way bi-amplified bass reflex
- **2 x 380mm (15") LF woofer with 64mm (2.5") voice coil**
- **25mm (1") throat /35mm (1.4") voice coil HF compression driver**
- 42Hz to 20KHz Frequency Response
- **1600W amplifier in Class D** for LF and **200W in Class AB** for HF with an high dynamics response for a pleasant sound at high volume
- **80° H x 50° V** constant directivity rotatable horn



X-PRO 15A

Processed Active Speaker
1000W RMS - 128dB SPL

- 2-way bi-amplified bass reflex
- FBT **Custom 380mm (15") LF woofer with 64mm (2.5") voice coil**
- FBT **25mm (1") throat /35mm (1.4") voice coil HF compression driver**
- 42Hz to 20KHz Frequency Response
- **80° H x 50° V** constant directivity rotatable horn
- **35° or 45°** monitor taper



X-PRO 12A

Processed Active Speaker
1000W RMS - 127dB SPL

- 2-way bi-amplified bass reflex
- FBT **Custom 320mm (12") LF woofer with 50mm (2") voice coil**
- FBT **25mm (1") throat /35mm (1.4") voice coil HF compression driver**
- 50Hz to 20KHz Frequency Response
- **80° H x 50° V** constant directivity rotatable horn
- **35°** monitor taper



X-PRO 10A

Processed Active Speaker
1000W RMS - 126dB SPL

- 2-way bi-amplified bass reflex
- FBT **Custom 250mm (10") LF woofer with 50mm (2") voice coil**
- FBT **25mm (1") throat /35mm (1.4") voice coil HF compression driver**
- 58Hz to 20KHz Frequency Response
- **80° H x 50° V** constant directivity rotatable horn
- **35°** monitor taper



X-SUB 18SA

Processed Active Subwoofer
1200W RMS - 136dB SPL

- Compact band-pass design subwoofer with high SPL and punch
- **460mm (18") high excursion woofer with 75mm (3") voice coil**
- Frequency response from 38Hz to 120Hz
- **1200W RMS Class D** power amplifier with switch mode supply
- Digital Signal processor with **6 presets**, 2 equalization with 2 LPF crossover settings
- Control panel with stereo combo XLR/ Jack in/outs, Stereo XLR HP-Filter outs, Volume, EQ presets, phase reversal switch 0°-180°, status LED indicators
- **18mm plywood** cabinet with scratch & scuff resistant paint finish
- **M20 (20mm)** top mount speaker stand socket, two FBT design aluminum handles, **100 mm optional wheels**
- Provides additional low frequency reinforcement when used along with X-PRO or X-LITE



X-SUB 15SA

Processed Active Subwoofer
1200W RMS - 131/135dB SPL

- Compact bass reflex design subwoofer with high SPL and punch
- **380mm (15") high excursion woofer with 75 mm (3") voice coil**
- Frequency response from 42Hz to 120Hz
- **1200W Class D power amplifier with switch mode supply**
- Digital Signal processor with **6 presets**, 2 equalization with 2 LPF crossover settings
- Control panel with stereo combo XLR/ Jack in/outs, Stereo XLR HP-Filter outs, Volume, EQ presets, phase reversal switch 0°-180°, status LED indicators
- **15mm plywood** cabinet with scratch & scuff resistant paint finish
- **M20 (20mm)** top mount speaker stand socket, two FBT design aluminum handles, **100mm optional wheels**
- Provides additional low frequency reinforcement when used along with X-PRO or X-LITE speaker series

X-PRO 15

Passive Reinforcement Speaker
400W/8ohm RMS - 126dB SPL

X-PRO 12

Passive Reinforcement Speaker
300W/8ohm RMS - 125dB SPL

X-PRO 10

Passive Reinforcement Speaker
250W/8ohm RMS - 123dB SPL



LINE ARRAY | 19 SYSTEM



Model		X-PRO 215A	X-PRO 15A	X-PRO 12A	X-PRO 10A	X-SUB 18SA	X-SUB 15SA
Configuration	way	2	2	2	2	1	1
Built-in amplifier max LF/HF	W	1600/200	800/200	800/200	800/200	1200	1200
Frequency response	@-6dB	42Hz - 20KHz	42Hz - 20KHz	50Hz - 20KHz	58Hz - 20KHz	38Hz - 120Hz	42Hz - 120Hz
Low frequency woofer	inch	2 x 15 - 2.5 coil	15 - 2.5 coil	12 - 2 coil	10 - 2 coil	18 - 3 coil	15 - 3 coil
High frequency driver	inch	1 - 1.4 coil	1 - 1.4 coil	1 - 1.4 coil	1 - 1.4 coil	-	-
Maximum SPL peak	dB	129 / 132	123 / 128	122 / 127	121 / 126	132 / 136 half space	131 / 135 half space
Dispersion	H x V	80° x 50° rotatable	80° x 50° rotatable	80° x 50° rotatable	80° x 50° rotatable	omni	omni
Input impedance	kOhm	22	22	22	22	22	22
Input connectors		XLR with loop, Jack ST, RCA ST	XLR with loop, Jack ST, RCA ST	XLR with loop, Jack ST, RCA ST	XLR with loop, Jack ST, RCA ST	XLR ST with loop, XLR ST OUT	XLR ST with loop, XLR ST OUT
Power cord	mm /inch	5 / 16.4	5 / 16.4	5 / 16.4	5 / 16.4	5 / 16.4	5 / 16.4
Net dimensions (WxHxD)	mm inch	437x1175x440 17.2x46.2x17.3	440x735x440 17.32x28.93x17.32	370x640x370 14.56x25.19x14.56	315x550x315 12.40x21.65x12.40	510x666x650 20.07x26.22x25.59	455x586x570 17.9x23.1x22.4
Net weight	kg / lb	37 / 81.2	20 / 44.1	16 / 35.3	12.5 / 27.5	34 / 74.95	30 / 66.1
Transport dimensions(WxHxD)	mm inch	537x1275x540 21.1x50.2x21.2	535x810x535 21.06x31.88x21.06	465x715x465 18.30x28.14x18.30	410x625x410 16.14x24.60x16.14	600x740x740 23.62x29.13x29.13	555x686x670 21.8x27.0x26.4
Transport weight	kg / lb	42 / 92.6	24 / 52.9	19 / 41.9	15 / 33.1	37 / 81.57	35 / 77.2

Model		X-PRO 15	X-PRO 12	X-PRO 10
Configuration	way	2	2	2
Recommended amplifier	W rms	400	300	250
Long term power *	W	200	150	125
Short term power (IEC 268-5) **	W	800	600	500
Nominal impedance	Ohm	8	8	8
Frequency response	@-6dB	53Hz - 20KHz	56Hz - 20KHz	68Hz - 20KHz
Low frequency woofer	inch	15 / 2.5 coil	12 / 2 coil	10 / 2 coil
High frequency driver	inch	1 / 1.4 coil	1 / 1.4 coil	1 / 1.4 coil
Sensitivity (@1W/1m)	dB	98	97	96
Maximum SPL cont/peak	dB	123 / 126	122 / 125	120 / 123
Dispersion	H x V	80°x50° rotatable	80°x50° rotatable	80°x50° rotatable
Crossover frequency	kHz	1.8	2	2.5
Recommended HP filter		HP40Hz 12-24db/oct	HP 45Hz 12-24db/oct	HP 55Hz 12-24db/oct
Recommended external DSP		FBT DLM26	FBT DLM26	FBT DLM26
Input connectors		2 x SPEAKON	2 x SPEAKON	2 x SPEAKON
Net dimensions (WxHxD)	mm inch	440x735x440 17.32x28.93x17.32	370x640x370 14.56x25.19x14.56	315x550x315 12.40x21.65x12.40
Net weight	kg / lb	20 / 44.1	16 / 35.3	12.5 / 27.5
Shipping dimensions(WxHxD)	mm inch	535x810x535 21.06x31.88x21.06	465x715x465 18.30x28.14x18.30	410x625x410 16.14x24.60x16.14
Shipping weight	kg / lb	24.5 / 54.01	19.3 / 42.5	15 / 33.06

* 100 hour power test, IEC 268-5 standard (display the long term RMS voltage handling, using IEC filtered 6db crest factor pink noise)

** Based on peak level of 6 db crest factor random noise signal used for test

Accessories page 76	X-PRO 215A	X-PRO 15A	X-PRO 12A	X-PRO 10A	X-SUB 18SA	X-SUB 18SA with wheels	X-SUB 15S	X-SUB 15S with wheels
Nylon cover	XP-C 215 41234	XP-C 15 39486	XP-C 12 39487	XP-C 10 39488	XS-C 18S 38895	XS-CH 18S 38896	XS-C 15S 41233	XS-CH 15S 41234
U bracket horizontal wall mount		XP-U 15 38894	XP-U 12 38893	XP-U 10 38892				
Wheels kit					KW-X SUB 38899			



Vertus

PROFESSIONAL LINE ARRAY

VERTUS CLA was created with the thought of **integrating professional line array technology in an extremely compact and elegant speaker column.**

Compared to the traditional two-way speakers, the **sound is distributed much more evenly throughout the audience**, both in outdoor and in indoor environments acoustically difficult or reverberating as well. The CLA cylindrical wave front boasts the pleasant effect of present and precise forwardly projected sound. Even acoustic feedback towards microphones is reduced.

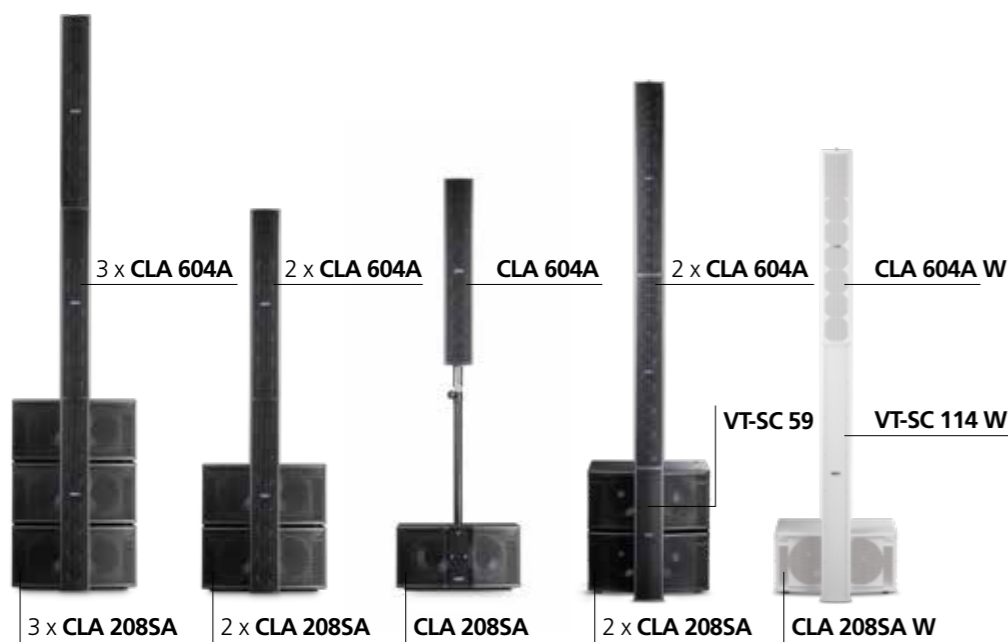
VERTUS CLA is a light and compact modular line array system created for both live and fixed installations, comprised by two products:

- **CLA 604A:** bi-amp two-way active column speakers **400 + 100W RMS**
- **CLA 208SA:** active subwoofer **600W RMS**

CLA604A is an extruded aluminum column speaker fitted with **6 x 4" custom woofers and 4 x 1" dome tweeters**, each coupled to a wave guide. The internal **Class D amplification**, 400W for woofers and 100W for tweeters with switch mode power supply and **DSP processor with 4 equalization presets** provide unexpected dynamics in a system of these dimensions.

The rapid latching system with pins allows for the expansion of the system, doubling-up CLA604A modules to form a unified column with an absolute and coherent source integration and increase of SPL and low-frequency directivity control.

CLA 208SA is a **2 x 8" active subwoofer in bass-reflex** design and birch ply enclosure. The internal Class D amplifier delivers 600W and is matched with a switch mode power supply and a DSP processor with filtering functions, equalization and speaker protection. **Created with the idea of extending the CLA608A's low frequency performance in live applications**, the CLA208SA serves as the base support for the CLA604A column speaker which can either be frontally mounted to the sub, as well as fixed upon the optional stand through the M20 socket on the upside of the sub. The CLA208SA subwoofers are modular as well, and they can be stacked to enlarge and increase the maximum SPL.



CLA 604A

2 x CLA 604A

3 x CLA 604A

VT-SC 59

VT-SC 114 W

3 x CLA 604A

2 x CLA 604A

CLA 604A

2 x CLA 604A

CLA 604A W

3 x CLA 208SA

2 x CLA 208SA

CLA 208SA

2 x CLA 208SA

CLA 208SA W



CLA system features:

- **High-level sound quality** from 50Hz to 20kHz expressly developed for live performance
- **Long distance sound projection** and better SPL distribution towards the audience
- **Great and dynamic power performance** thanks to tri-amplification system
- **Lightweight and easy to carry**
- **Design and elegance** for an easy integration even in the most demanding installations
- **Very compact dimensions** enable the listener to concentrate on sound and not on speakers!
- **High horizontal dispersion**

The internal XLR signal link system and Neutrik POWERCON power supply on both the sub and the satellite, **allows for hiding wires and cables from open sight, preserving the system's clean aesthetics.**

VERTUS CLA is a true professional line array system that can satisfy the musician looking for a compact PA solution, easily to carry, modular, ready to use in just minutes with no-compromise quality. It is **capable of being integrated into any environment or installation requiring high-quality sound and controlled directional characteristics.**



Vertus is also available in white colour:
Vertus 604A W
Vertus 208SA W



Vertus CLA 604A

Column Active Line Array
400W + 100W RMS - 125dB SPL

- 2-way bi-amplified Line Array Column
- **6 x 100 mm (4")** custom woofer with 25 mm (1") voice coil
- **4 x 25 mm (1")** neodymium dome tweeter on waveguide
- 130Hz to 20KHz frequency response
- **Class D 400W RMS** amplifier for **LF** and **100W RMS** for **HF** with switch mode power supply
- **DSP processor** with 4 available equalization presets
- Control panel with volume, presets, HP filter, Mic-Line, status LED
- XLR input and Neutrik POWERCON supply input at the lower part of the column; XLR link and Neutrik POWERCON loop output at the higher part, in order to hide each connection cable
- **100°H x 20°V dispersion**
- **Extruded-aluminum power coated cabinets.** Superior latching system enables the extension of the length of the line array by adding CLA604A modules for increased modularity of the system
- Possibility to angle the columns of +/- 30° on a horizontal plane
- Ideal for both live applications, assisted by the CLA 208SA active subwoofer, as well as for fixed installation
- **Easily expandable for a total power of 6600W** (stereo system composed of 3 x CLA604A and 3 x CLA208SA)
- Very light and easy to carry



Vertus CLA 208SA

Processed Active Subwoofer
600W RMS - 129dB SPL

- Active subwoofer in bass-reflex design
- **2 x 200 mm (8")** custom, **high-excursion woofer** with 50 mm (2") voice coil
- 50Hz to 180Hz frequency response
- **Class D 600W RMS** amplifier with switch mode power supply
- **DSP processor** with 4 available presets
- Control panel with combo XLR/Jack stereo input and link, XLR Hi-pass out stereo, volume, presets, 0°-180° phase switch, status LED
- **Neutrik POWERCON** input and link
- **15 mm birch plywood enclosure** with anti-scratch paint finish, stackable
- M20 stand adapter, 2 integrated handles, front hardware to sustain CLA604A modules
- Suitable for low frequency extension and reinforcement of the CLA604A array, especially for live performance



VERTUS CS1000

Created as a no-compromise choice for both live performers and installers, the VERTUS CS1000 compact line array combines maximum performance with a modular, scalable approach

Its lightweight but sturdy construction blended with FBT's distinctive engineering and elegance has delivered a system that can be deployed on stage within minutes, or discreetly integrated into the most delicate of decors to provide high-quality sound and controlled directivity.

A bi-amplified design, the system comprises a long excursion 12" bass reflex subwoofer and a passive mounted satellite, linked via a Neutrik SPEAKON connector and equipped with six full-range neodymium 3" speakers. Onboard the subwoofer is a Class-D, two channel amplifier, complete with switch-mode power supply, delivering 600W RMS to the subwoofer and 400W RMS to the satellite, both of which are housed in birch plywood enclosures.

For ease of use, a storage compartment is provided within the subwoofer enclosure to securely house both the satellite speaker and its supplied mounting pole for storage and transport. A dedicated locking system holds all of the equipment in place.

As with all FBT products, graceful but effective engineering is at the heart of the VERTUS CS1000, as exemplified by the mounting pole. Comprised of three sections, the pole allows users to alter the height of



the satellite to suit their requirements, while a custom joint provides continuous vertical adjustment to ensure precise coverage in every venue. No listener is left untouched by the VERTUS CS1000 - the slim proportions of the satellite facilitate a wide horizontal dispersion of 110°, while the precision placement of the six 3" drivers to form a J-array creates a vertical dispersion of 30° (+10° / -20°).

Need more power? The VERTUS CS1000 takes a modular approach in that two systems can be used in a dual configuration to form a totally coherent and much more powerful solution. By stacking the two subwoofers and locking the two satellites together end-to-end (via optional hardware), the maximum SPL of the overall system is raised by 6dB. Coverage is also extended - although the horizontal dispersion remains consistent, vertical dispersion increases to 40° (+20° / -20°)

Other features ensure ease of use and a rugged build quality. The subwoofer is equipped with aluminum handles complete with a rubber insert to guarantee a comfortable grip - transporting the entire system, including the subwoofer, satellite, mounting pole, joint and all cables, is both convenient and comfortable. The fanless amplifier module is protected by diecast aluminum, while onboard DSP offers a choice of eight dedicated presets, each one shaped by FBT's long experience in creating proprietary algorithms to suit every requirement.

Finally, the VERTUS CS1000 is compact in dimension but big on sound. The volume of the satellite can be adjusted in accordance with the subwoofer in 8 steps between -4.5 / +5dB range, while a selectable high-pass filter ensures optimum reproduction. And as your requirements grow, the VERTUS CS1000 compact line array will grow with you - simply combine four systems in a two per-side stereo configuration to achieve a remarkable 8.000W peak.



Vertus CS1000

Compact Two-Way
Integrated Array System
600W + 400W RMS - 129dB SPL

- 2-way speaker system
- 6 x full-range, 3" (70mm) neodymium high efficiency custom woofers with 0.75" (20mm) voice coils
- Subwoofer with a custom 12" (320mm) long excursion speaker with a 2.5" (64mm) voice coil
- Frequency response of 40Hz to 20KHz
- Onboard Class-D, switch-mode amplifier delivering 600Wrms + 400Wrms for LF and HF respectively
- Built-in DSP with eight presets to suit every application
- Variable satellite volume between -4.5 / + 5 dB in 8 steps
- Control Panel with master volume, presets, variable satellite volume, LED status, mic/line
- Input and link via XLR and Neutrik SPEAKON for satellite connection
- Dispersion 110° (H) x 30° (V)



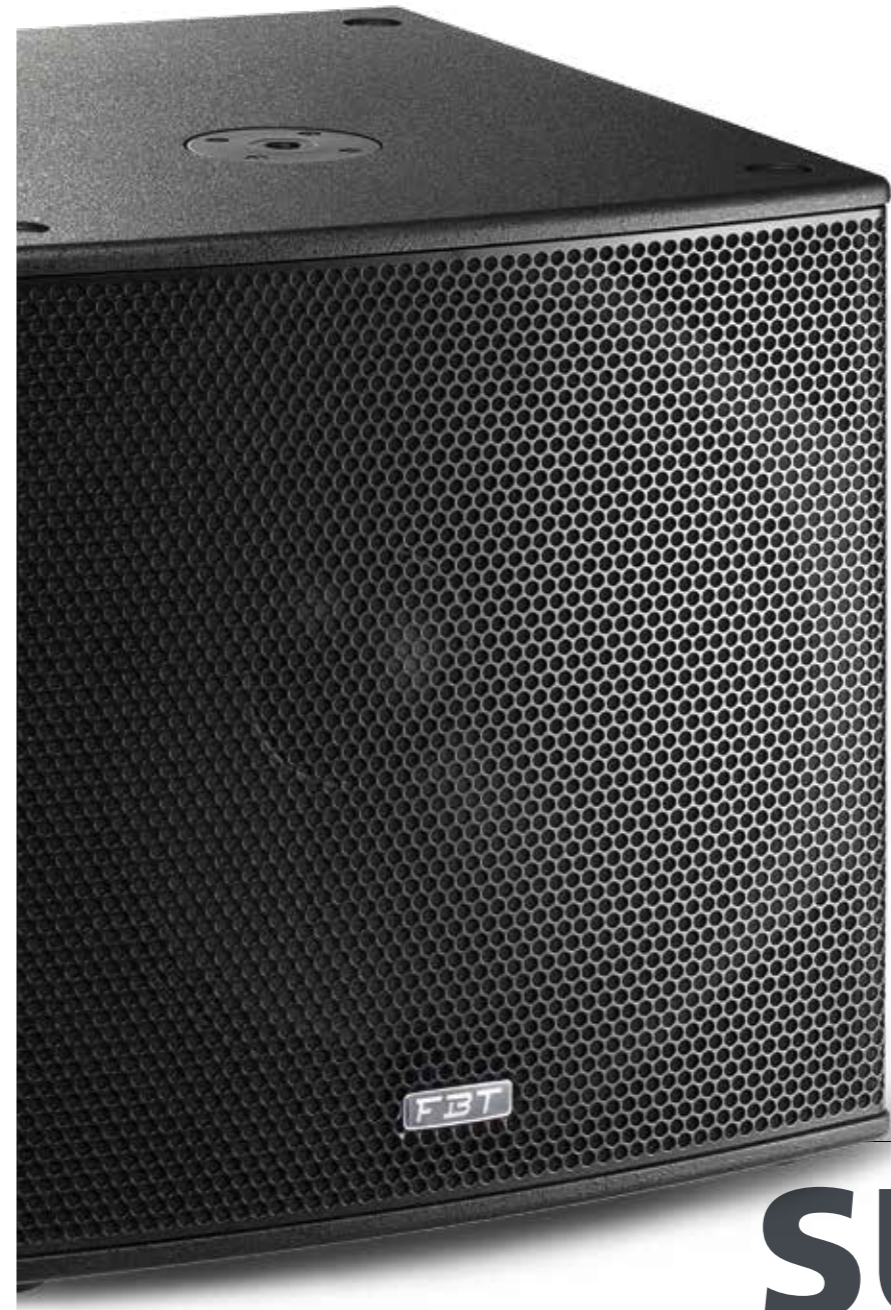
- Modular design allowing two systems to be configured as one single solution via optional accessories
- Bass reflex stackable subwoofer in a birch plywood enclosure with diecast aluminum handle and rubber inserts, plus M20 support and a custom pole-mount solution facilitating adjustable height and vertical aiming
- The satellite and pole are fully integrated into the subwoofer cabinet, where a push button system locks the satellite in place for transportation
- The satellite is equipped with a coupling system for accessories which allow the extension of the length of the line array, positioning one atop the other. Alternatively, the same system allows the satellite to be permanently wall-mounted
- Ideal for both live applications and fixed installations
- Easily expandable to a total power of 8.000W peak (via a stereo system consisting of 4 x VERTUS CS1000, positioned two per side)



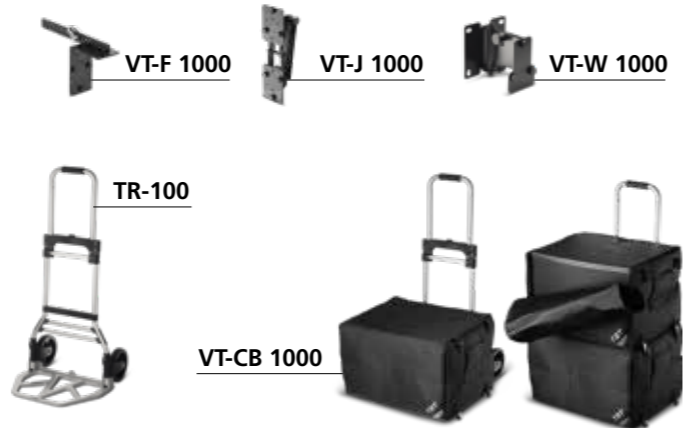


Model	CLA604a	CLA208Sa	CS1000	
Configuration	way 2	1	2	
Built-in amplifier cont. LF/HF	W RMS 350/80	400	600/400	
Built-in amplifier max. LF/HF	W RMS 400/100	600	-	
Built-in amplifier max. peak LF/HF	W 800/200	1200	1200/800	
Frequency response	@-6dB 130Hz - 20KHz	50Hz - 180Hz	40Hz - 20KHz	
Low frequency woofer	inch 6 x 4" - 1" coil	2 x 8" - 2" coil	12 - 2.5 coil	
High frequency driver	inch 4 x 1" - 1" coil	-	6 x 3 - 0.8 coil - neodymium	
Maximum SPL cont/peak	dB 122 / 125	125 / 129 half space	125 / 129	
Dispersion	H x V 100° x 20°	Omnidirectional	110° x 30°	
Input impedance	kOhm 22	22	22	
Crossover frequency	kHz 2.5	0.15	1.8	
AC Power requirements	VA 450	450	640	
Input connectors	XLR with loop	stereo XLR with loop/HP out	XLR with loop	
Power cord	m / ft 5 / 16.4	5 / 16.4	5 / 16.4	
Net dimensions (WxHxD)	mm 130x841x130 inch 5.12x33.1x5.12	550x270x500 21.7x10.6x19.7	Satellite 105X530X120 4.13x20.86x4.72	Subwoofer 565X373X450 22.24x14.68x17.71
Net weight	Kg/Lb 9 / 19.84	20 / 44.09	Satellite 3.5 / 7.71	Subwoofer 22.4 / 49.38
Transport dimensions (WxHxD)	mm 220x930x220 inch 8.66x36.61x8.66	690x370x625 27.16x14.56x24.60	695X473X580 27.36x18.62x22.83	
Transport weight	Kg/Lb 11.5 / 25.35	23.5 / 51.80	33.5 / 73.85	

Accessories page 76	CLA604a	CLA208SA	CS1000	
Nylon cover	VT-C 604 36122	VT-C 208 36123	VT-C 1000 41024	
Carrying bag			VT-CB 1000 40730	
Trolley			TR-100 40912	
Stand adapter ø 35mm	VT-S 604/W 35723 Black - 37044 White			
Directional stand adapter	VT-DS 604/W 37053 Black - 37054 White			
Directional wall mount bracket	VT-W 604/W 35722 Black - 37043 White		VT-W 1000/W 40728 Black - 41039 White	
Stand column h 59cm	VT-SC59 604/W 36879 Black - 36883 White			
Stand column h 114cm	VT-SC114 604/W 37041 Black - 37042 White			
Flying Bar			VT-F 1000/W 40913 Black - 41041 White	
Joint Bar			VT-J 1000/W 40731 Black - 41040 White	



SUBline





The new improved SUBLine incorporates Class D amplification, designed and made in Italy to FBT's exacting standards, plus switch-mode power supplies and DSP presets for accompanying full range enclosures. All models are road-ready with tour-grade birch plywood construction, integrated carrying handles and optional wheels. In addition, in/out stereo connectors aid flexibility, facilitating the use of a single sub in left-right stereo set-ups.

Created with the aim to maximize SPL/SIZE ratio, they have **Class D amplifiers, switch mode power supply and Digital Signal Processor** with presets to match any other FBT speaker.

With IN/OUT stereo connectors, it is possible to use only one subwoofer with Left and Right speakers

Optional wheels, ergonomic integrated carrying handles and tour-grade plywood cabinets allow an easy transport



SUBLine 218Sa

Processed active subwoofer
1200W RMS - 140dB SPL

- Bass-reflex design Subwoofer
- **2 x 460mm (18")** high excursion woofer with **75mm (3")** voice coil, custom made for FBT by B&C
- Frequency response from 30Hz to 120Hz
- **1200W RMS Class D** power amplifier with switch mode power supply
- DSP with 6 presets, 3 x EQ with 2 x LPF crossover settings, 6-step digital delay line
- Control panel with stereo XLR in/out, Volume, EQ presets, Delay, Phase reversal switch 0°-180°, 3 status LED indicators
- **18mm** Baltic birch plywood enclosure with heavy duty coating
- **2 x M20** threads for stand pole mount, 4 x aluminum ergonomic FBT handles, optional wheels
- Provides additional low frequency extension when used along with FBT'S MUSE 210LA 2 x 10" active line array system

SUBLine 218S

Sound Reinforcement Subwoofer
2400W RMS - 143dB SPL

- Neutrik Speakon NL4MD-V connectors IN & LINK OUT
- External digital processor required: FBT DLM26 Digital Loudspeaker Management



SUBLine 118Sa

Processed active subwoofer
1200W RMS - 134/137dB SPL

- Bass-reflex design subwoofer
- **460 mm (18") high excursion woofer with 75 mm (3") voice coil, custom made for FBT by B&C**
- Frequency response from 33Hz - 100Hz
- **1200W RMS Class D power amplifier with switch mode power supply**
- **Digital Signal Processor with 6 presets**, 4 equalization with 2 LPF Crossover Settings, 6 step digital delay line up to 3.5m
- Control Panel with Stereo XLR in/out, Volume, EQ Presets, Delay, Phase Reversal Switch 0°-180°, 3 status LED indicators
- **15 mm (0.59")** birch plywood scratch resistant enclosure with internal bracing
- **M20 (20mm)** top mount speaker stand socket and two aluminum ergonomic FBT handles

SUBLine 118S

Sound Reinforcement Subwoofer
1200W RMS - 133/136dB SPL

- Neutrik Speakon NL4MD-V connectors IN & LINK OUT
- External digital processor required: FBT DLM26 Digital Loudspeaker Management



SUBLine 115Sa

Processed active subwoofer
700W RMS - 132/135dB SPL

- Bass-reflex design with high SPL and punch
- **380mm (15")** high excursion magnet woofer with 75mm (3") voice coil
- Frequency response from 40Hz to 140Hz
- **New amplifier engineered and manufactured by FBT, 700W RMS LF in Class D**
- **Digital Signal processor with 8 presets**, 2 equalization with 2 LPF Crossover settings, cardioid configuration
- Control panel with Stereo XLR in/out, Volume, EQ presets, 8 steps Delay from 0.25m to 3.5m, Phase Reversal Switch 0°-180°, 3 status LED indicators
- **15 mm (0.59")** birch plywood scratch resistant enclosure with internal bracing
- **M20 (20mm)** top mount speaker stand socket and two aluminum ergonomic FBT handles

SUBLine 115S

Sound Reinforcement Subwoofer
700W RMS - 135/135 dB SPL

- Neutrik Speakon NL4MD-V connectors IN & LINK OUT
- External digital processor required: FBT DLM26 Digital Loudspeaker Management



SUBLine 112Sa

Processed active subwoofer
700W RMS - 130/133dB SPL

- Bass-reflex design with high SPL and punch
- **320mm (12") high excursion magnet woofer with 75mm (3") voice coil**
- Frequency response from 40Hz to 140Hz
- **New amplifier engineered and manufactured by FBT, 700W RMS LF in Class D**
- **Digital Signal processor with 8 presets**, 2 equalization with 2 LPF Crossover settings, cardioid configuration
- Control panel with Stereo XLR in/out, Volume, EQ presets, 8 steps Delay from 0.25m to 3.5m, Phase Reversal Switch 0°-180°, 3 status LED indicators
- **15 mm (0.59")** birch plywood scratch resistant enclosure with internal bracing
- **M20 (20mm)** top mount speaker stand socket and two aluminum ergonomic FBT handles

SUBLine 112S

Sound Reinforcement Subwoofer
700W RMS - 133/136dB SPL

- Neutrik Speakon NL4MD-V connectors IN & LINK OUT
- External digital processor required: FBT DLM26 Digital Loudspeaker Management



15 mm (5/8") Baltic birch plywood cabinet with scratch & scuff resistant paint finish

M20 (20 mm) top mount speaker stand socket, two aluminum carrying handles



STAGE | 31
MONITOR



StageMaxX

Model		SUBLine 218Sa	SUBLine 118Sa	SUBLine 115Sa	SUBLine 112Sa
Configuration	way	1	1	1	1
Built-in amplifier max. LF/HF	W RMS	1200	1200	700	700
Built-in amplifier max. peak LF/HF	W	2400	2400	1400	1400
Frequency response	@-6dB	30Hz - 100Hz	33Hz - 100Hz	38Hz - 140Hz	42Hz - 140Hz
Low frequency woofer	inch	2x18 - 3 coil	1x18 - 3 coil	1x15 - 3 coil	1x12 - 2.5 coil
High frequency driver	inch	-	-	-	-
Maximum SPL cont/peak	dB	137 / 140 half-space	134 / 137 half-space	132 / 135 half-space	129 / 133 half-space
Dispersion	H x V	omnidirectional	omnidirectional	omnidirectional	omnidirectional
Input impedance	kOhm	22	22	22	22
Crossover frequency	kHz	100Hz	100Hz	90 or 140Hz	90 or 140Hz
AC Power requirements	VA	800	800	640	640
Input connectors		stereo XLR with loop	stereo XLR with loop	stereo XLR with loop, HP out	stereo XLR with loop, HP out
Power cord	m / ft	7 / 22.9	7 / 22.9	6 / 19.7	5 / 16.4
Net dimensions (WxHxD)	mm inch	975x661x670 38.18x25.98x26.37	555x572x666 21.8x22.5x26.2	500x517x570 19.7x20.3x22.4	430x447x480 16.9x21.5x18.9
Net weight	Kg / Lb	81 / 178.57	44,5 / 98,1	28 / 61,7	23 / 50,7
Transport dimensions(WxHxD)	mm inch	1150x830x800 45.27x30.70x31.49	800x642x800 31,5x25,3x31,5	600x617x670 23,6x24,3x26,4	530x547x580 20,9x21,5x22,8
Transport weight	Kg / Lb	96 / 207.23	54,5 / 120,1	32 / 70,5	27 / 59,5

Model		SUBLine 218S	SUBLine 118S	SUBLine 115S	SUBLine 112S
Configuration	way	1 reflex	1 reflex	1	1
Recommended amplifier	W RMS	2400	1200	700	700
Long term power	W	1200	600	350	350
Short term power IEC 268-5	W	4800	2400	1400	1400
Nominal impedance	Ohm	4	4	8	8
Frequency response	@-6dB	30Hz - 250Hz	33Hz - 400Hz	40Hz - 140Hz	45Hz - 140Hz
Low frequency woofer	inch	2x18 - 3 coil	18 - 3 coil	15 - 3 coil	12 - 3 coil
High frequency driver	inch	-	-	-	-
Sensitivity (@1W/1m)	dB	101	98.5	98	97
Maximum SPL cont/peak (Bi-Amp)	dB	139 / 143 half-space	133 / 136 half-space	132 / 135 half-space	130 / 133 half-space
Dispersion	H x V	omnidirectional	omnidirectional	omnidirectional	omnidirectional
Crossover frequency	kHz	external active	external active	FBT DLM26	FBT DLM26
Recommended HP filter		28Hz - 24dboct	28Hz - 24dboct	35Hz - 24dboct	38Hz - 24dboct
Input connectors		2 x Speakon NL4 in & thru	2 x Speakon NL4 in & thru	2 x Speakon NL4 in & thru	2 x Speakon NL4 in & thru
Net dimensions (WxHxD)	mm inch	970x661x670 38.18x25.98x26.37	555x572x666 21.8x22.5x26.2	500x517x570 19.7x20.3x22.4	430x447x480 16.9x21.5x18.9
Net weight	Kg/Lb	77 / 169.75	42 / 92.6	26 / 57.3	21 / 46.3
Transport dimensions(WxHxD)	mm inch	1150x780x800 45.27x30.70x31.49	800x642x800 31,5x25,3x31,5	600x617x670 23,6x24,3x26,4	530x547x580 20,9x21,5x22,8
Transport weight	Kg/Lb	90 / 198.41	52 / 114.6	28 / 61.7	25 / 55.1

Accessories page 77	SUBLine 218Sa	SUBLine 218Sa with wheels	SUBLine 118Sa	SUBLine 118Sa with wheels	SUBLine 115Sa	SUBLine 115Sa with wheels	SUBLine 112Sa
Nylon cover	SL-C 218S 38897	SL-CH 218S 38898	SL-C 118 41225	SL-CH 118 41226	SL-C 115 41227	SL-CH 115 41228	SL-C 112 41229
4 wheels kit: 2 with brake 80mm ø					KW-HM 80 30423		
4 wheels kit with brake 100mm ø	KBW-1004S 25197		KBW-1004S 25197				

MAXX MORE! THE NEW STAGE MONITOR

FBT's brand new StageMaxX has been inspired by the need to have a product specifically designed and engineered for use as stage monitor, overcoming all compromises for a full user satisfaction.

The extremely heavy-duty and resonance free polypropylene cabinet is born from the enormous experience of FBT in gas injected mold engineering it acoustically behaves like a wooden cabinet allowing the perfect integration of all the components for an uncompromising quality in a compact, elegant, unobtrusive on stage, extremely comfortable and easy to carry product.

StageMaxx 12Ma is the right combination of all the quality features to be a perfect stage monitor:

- Low profile and aesthetic elegance
- Compact size
- Frequency response studied for stage monitor applications
- High headroom before feedback
- High sound quality
- Great power and dynamics
- Symmetric dispersion
- Aligned LF and HF acoustic centers
- Easy handling on stage
- Lightweight
- Heavy-duty polypropylene cabinet

StageMaxX features a 12" B&C loudspeaker custom made for FBT and coaxially mounted with a B&C 1" exit throat compression driver.

The coaxial configuration allows perfect alignment of the acoustic centers of the transducers, guaranteeing symmetry of dispersion and

improving focus of the stereo image in Left-Right configuration.

Bi-amplification design with high dynamic Class D amplifiers delivering 400W + 100W RMS through a switch mode power supply. Digital Signal Processor with 4 factory equalization presets provides simple and efficient EQ adjustment to optimize the acoustical response for different applications. The FOH preset allows the use in suspended installation as well as 'drum fill' applications.

StageMaxX features two lateral M10 rigging points and wall mounting bracket for different applications (optional accessories).

3 frontal status LED indicators to control ON OFF limiter and protection state.

New Neutrik POWERCON TRUE 1 AC connector with Input and loop out to supply AC power to up to 7 additional StageMaxX speakers at 230Vac and 3 at 117Vac.

Three ergonomic integrated carrying handles, one frontally placed to easily drag and move the monitor on stage and the replaceable Teflon feet ensure sliding on stage with minimal wear.

The cabinet has 35° or 55° tilted front panel for an optimal listening distance for single user (35°) or for more users (55°).

The 4 presets are:

- **ORIGINAL:** is the typical "MaxX" sound adapted to "STAGE" application
- **HI-CUT/DRUM FILL:** provides less mid-high for a comfortable listening in near-field at high level
- **LO-CUT/DOUBLE:** provides less low frequency for better intelligibility and for optimal coupling in stereo configuration
- **FOH:** Front Of House use in suspended or pole-mount installations



StageMaxX 12Ma

**Processed Active Reinforcement Monitor
400W + 100W RMS - 130dB SPL**

- 2-way, bi-amplified, bass reflex design cabinet
- Coaxial custom FBT 320 mm (12") B&C speakers with 64 mm (2.5") voice coil
- B&C 25 mm (1") exit throat compression driver and 44 mm (1.7") voice coil
- **Bi-amp: high dynamic Class D amplifiers 400W + 100W RMS** to provide a pleasant sound even at loud volume
- High efficiency switch mode power supply
- Digital Signal Processor with 4 factory equalization presets
- Control Panel: XLR/Jack input and XLR link out, Volume, 4 Presets, HP Filter, 3 frontal status LED indicators
- Neutrik POWERCON TRUE 1 AC connector with Input and loop out to supply AC power to additional StageMaxX speakers
- 90° Directivity Horn
- Proprietary filtered algorithms, dynamic equalization at low frequencies, advanced energy control allows a high SPL while granting reliable and distortion free audio reproduction with high headroom
- Sturdy gas-injected polypropylene molded enclosures engineered to avoid undesired resonance
- Weather resistant coating under the grill to protect the driver and the speaker
- High SPL in a compact size monitor
- 35° or 55° tilted front panel for an optimal listening distance for single or multiple users
- Three ergonomic integrated carrying handles, two M10 rigging points
- Teflon replaceable feet allow an easy use on stage



Available in white colour:
StageMaxX 12Ma W





Model	StageMaxX 12Ma	
Configuration	way	2
Built-in amplifier cont. LF/HF	W RMS	350/80
Built-in amplifier max. LF/HF	W RMS	400/100
Built-in amplifier max. peak LF/HF	W	800/200
Frequency response	@-6dB	60Hz - 20KHz
Low frequency woofer	inch	12 - 2.5 coil
High frequency driver	inch	1 - 1.7 coil
Maximum SPL cont/peak	dB	124 / 130
Dispersion	H x V	90°
Input impedance	kOhm	22
Crossover frequency	kHz	1.8
AC Power requirements	VA	450
Input connectors		XLR with loop
Power cord	m / ft	5 / 16.4
Net dimensions (WxHxD)	mm inch	550x289x392 21.65x11.37x15.43
Net weight	Kg / Lb	13.6 / 29.98
Transport dimensions(WxHxD)	mm inch	670x430x500 26.37x16.92x19.68
Transport weight	Kg / Lb	16.4 / 36.15

Accessories page 77	StageMaxX 12Ma	
Nylon cover	SM-C 12	36065
Wall metal bracket to mount in horizontal position	SM-U 12	36066 Black 36753 White
Metal bracket with top-hat speaker stand socket	SM-S 12	37099



SM-S 12
Metal bracket with top-hat speaker stand socket

MSA 300
Aluminium speaker stand Air-Cushioned



SM-U 12
Wall metal bracket to mount in horizontal position



Monitor 55°



Monitor 35°



HiMaxX



A BENCHMARK IN SOUND REINFORCEMENT

With the **HiMaxX series**, FBT establishes a **reference point** on the scenario of 12" and 15" sound reinforcement polypropylene enclosures, introducing performance and technical content of an impressive standard.

The **engineering of the enclosures**, the use of **switch mode power supplies** and **high-efficiency power amplifiers**, the custom design of the transducers made FBT's R&D team achieve the maximum in power/weight ratio.



Three models; two 2-way full-range enclosures in polypropylene, **HiMaxX 40** (12"+1") and **HiMaxX 60** (15"+1.4"), plus a compact 18" bandpass SUB in birch plywood (**HiMaxX 100Sa**). Compact and light weight, HiMaxX brilliantly solve all the most demanding needs for **bands**, musicians and professionals looking for **powerful, versatile and very high quality** loudspeaker enclosures. Ideal for live and sound reinforcement applications requiring **ease of transport**, they are also suited to **fixed installations**, thanks to the cabinets' design and optional accessories.

HiMaxX 60a
1100+250W
HiMaxX 60
700W



HiMaxX 40a
1000+250W
HiMaxX 40
500W



HiMaxX 100Sa
1200W



Amazing audio quality, thrilling performance, innovative design and extreme reliability





- A powerful dynamic design for aggressive clean-cut lines. **A sturdy light-weight enclosure that ensures great versatility** and is ready for installation, thanks to its special mounting points and optional accessories.
The asymmetrical design enables the enclosures to be used as stage monitors.
- A specially designed control panel ensures **ease of use and intuitive control**. Mic/Line input, auxiliary stereo input with (HiMaxX 40a), 3-band EQ, ground-lift, diagnostic LED.



- Loudspeaker components are engineered in collaboration with B&C. FBT studied and designed **special chassis. A more efficient ventilation circuit** with a consequent reduction of 2dB "power compression", a **considerably stiffer cone** to improve reliability and distortion and an even **more powerful neodymium magnet** to increase control and efficiency.
The voice coil has a diameter of 75 mm (3") for **higher power handling and reliability**.
- **B&C compression driver** with a 25 mm (1") throat and 44 mm (1.7") coil (HiMaxX 40) for high power handling. Thanks to the use of a shorting copper cap, high frequencies are even more dynamic and crystal-clear.



BOX 100
Ceiling bracket
balancing stand

- The development of the innovative amplifier is the result of years of research by the FBT R&D labs. It manages to combine the contrasting features of **lightness, high power, efficiency and reliability**, using the very latest technology. **A switch mode power supply** to reduce the weight and increase the power output velocity, a very high performance **PWM amplifier for the low frequencies**, to maximize the power fed out with minimum heat dissipation. **A Class G amplifier for the high frequencies** enables to achieve the audio quality of a Class A, with a much higher output.
- **The silent preamplifier** manufactured with SMD technology has the job of handling the equalization, 24dB/oct crossover, sophisticated protections, limiter and the commands of the control panel.
- **The horn's profile** has been **designed** to ensure greater directivity control and lower distortion. The dispersion angle is 90°H x 60°V.



MSA 300
Adjustable air-cushion floor
stand (ø 35 mm - 1.38")
- max weight
56 Kg (124 Lb)





Active HiMaxX

- 2-way, bi-amplified in Bass- Reflex design
- Switch mode power supply for an excellent ratio weight/power
- Sturdy cabinet in polypropylene also designed for stage monitor use
- Analog signal processor with limiter
- 4 x M10 suspension points, 35 mm Ø (1.38") top-hat for speaker stand placement and wall bracket mount flange, 2 integrated carrying handles
- 90°H x 60°V constant directivity horn

Passive HiMaxX

- Passive crossover filter featuring "soft-trip" circuitry to ensure full protection of LF woofer and HF driver
- 2 NL-4 Neutrik™ Speakon connectors



HiMaxX 60a

Processed Active Speaker
1100W + 250W RMS - 135dB SPL

- **B&C custom designed 380 mm (15") neodymium woofer** with 75 mm (3") voice coil
- **B&C 36 mm (1.4")** compression driver with 64 mm (2.5") voice coil
- **1100W RMS PWM** LF power amplifier
- **250W RMS Class G** HF power amplifier
- **Control panel with:**
 - **XLR Input and XLR Link**
 - **Gain and Volume functions in a single potentiometer** improving the dynamic range and input signal/noise ratio
 - **3-band EQ** (Bass, Mid, High)
 - **Ground-lift**
 - **Diagnostic LED**



HiMaxX 60

Sound Reinforcement Speaker
700W / 8ohm - 132dB SPL



HiMaxX 40a

Processed Active Speaker
1000W + 250W RMS - 133dB SPL

- **B&C custom designed 320 mm (12") neodymium woofer** with 75 mm (3") voice coil
- **B&C 25 mm (1")** compression driver with 44 mm (1.7") voice coil
- **1000W RMS PWM** LF power amplifier
- **250W RMS Class G** HF power amplifier
- **Control panel with:**
 - **Gain and Volume functions in a single potentiometer** improving the dynamic range and input signal/noise ratio
 - **Combo XLR/jack input XLR link**
 - **Mic/Line selection**
 - **Independent RCA input** channel with separate volume control to connect external devices such as MP3, CD, PC players
 - **3-band EQ** (Bass, Mid, High)
 - **Ground-Lift**
 - **Diagnostic LED**
- Enclosure suitable for stacking

HiMaxX 40

Sound Reinforcement Speaker
500W / 8ohm - 131dB SPL



HiMaxX 100Sa

Processed Active Subwoofer
1200W RMS - 139dB SPL

- Bandpass subwoofer design
- **18" (460 mm) custom neodymium B&C woofer** with a 3" (75 mm) voice coil
- Built-in **1200W RMS PWM** amplifier
- **Switch mode power supply**
- Analogue signal processor with limiter
- Control panel with:
 - XLR/input and XLR stereo outputs with Hi-Pass, filter for connecting the satellites
 - Volume
 - Ground-Lift
 - 0°-180° phase inverter switch
 - Limiter LED
- **18 mm (0.7") birch plywood enclosure**
- The special "**bandpass**" acoustic loading increases efficiency and maximum SPL
- **8 x M10 suspension points, stand socket and two integrated wooden handles**
- Optional 4 swivel-mount casters 80 mm Ø (3.15") on request

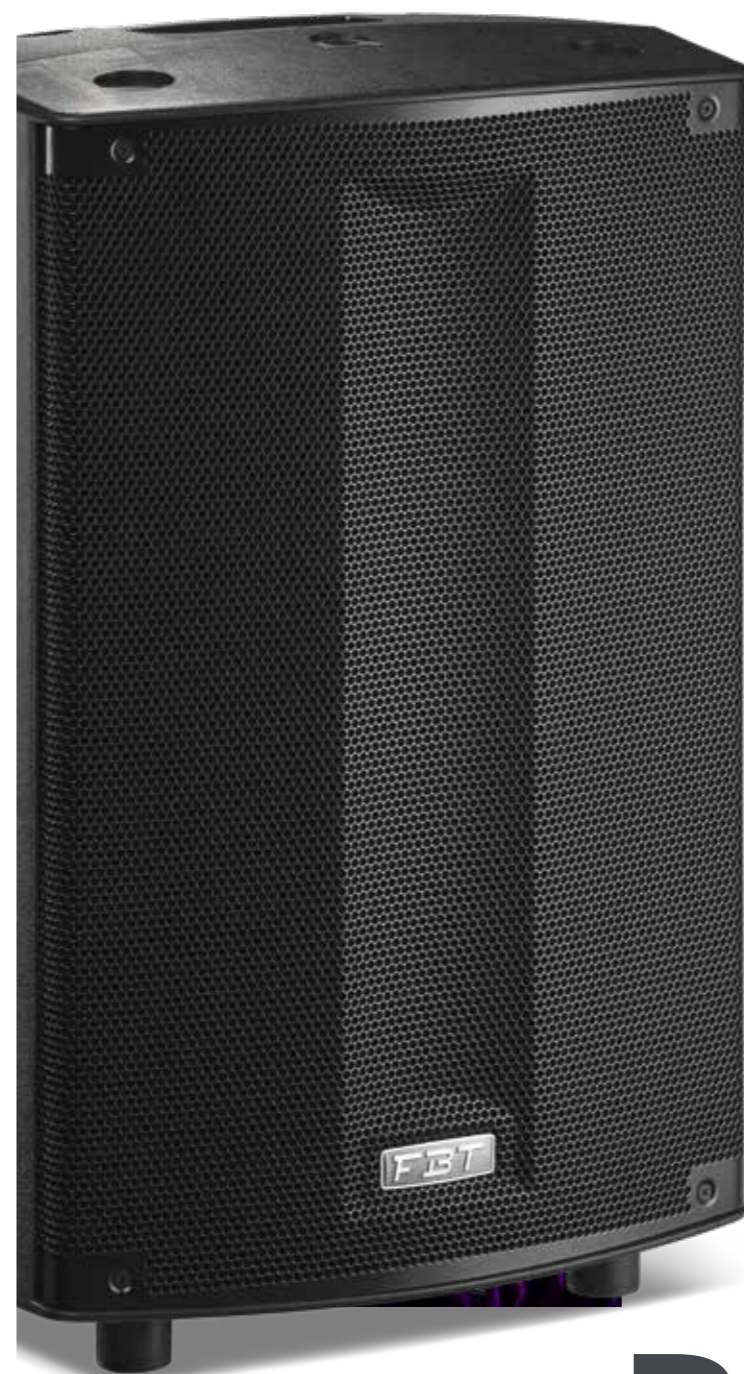




Model		HiMaxX 60a	HiMaxX 40a	HiMaxX 100Sa
Configuration	way	2	2	Band-Pass
Built-in amplifier max. LF/HF	W RMS	1100/250	1000/250	1200
Built-in amplifier max. peak LF/HF	W	2200/500	1600/500	2400
Frequency response	@-6dB	40Hz - 20kHz	45Hz - 20kHz	38 - 120Hz
Low frequency woofer	inch	1x15 - 3 coil	1x12 - 3 coil	1x18 - 3 coil
High frequency driver	inch	1.4 - 2.5 coil	1 - 1.7 coil	-
Maximum SPL cont./peak	dB	129/135	127/133	135/139
Dispersion	H x V	90° x 60°	90° x 60°	omnidirectional
Input impedance	kohm	22	22	22
Crossover frequency	kHz	1.2	1.6	active 120
Input connectors		XLR with loop	XLR/jack with loop RCA aux	stereo XLR with loop
Power cord	m / ft	5 / 16.4	5 / 16.4	5 / 16.4
Net dimensions (WxHxD)	mm inch	482x757x427 19x29.8x16.8	407x634x370 16x24.9x14.5	530x605x655 21x23.8x25.8
Net weight	Kg / Lb	28.3 / 62.4	17.9 / 39.4	43 / 94.8
Transport dimensions (WxHxD)	mm inch	520x867x600 20.4x34.1x23.6	495x720x470 19.5x28.3x18.5	660x735x785 26x29x31
Transport weight	Kg / Lb	30.3 / 66.8	20.5 / 45.2	47 / 103.6

Model		HiMaxX 60	HiMaxX 40
Configuration	way	2	2
Recommended amplifier	W RMS	700	500
Long term power	W	350	250
Short term power (IEC 268-5)	W	1400	1000
Nominal impedance	ohm	8	8
Frequency response	@-6dB	40Hz - 20kHz	50Hz - 20kHz
Low frequency woofer	inch	1x15 - 3 coil	1x12 - 3 coil
High frequency driver	inch	1.4 - 2.5 coil	1 - 1.7coil
Sensitivity (@1W/1m)	dB	99	99
Maximum SPL cont./peak	dB	129/132	127/131
Dispersion	H x V	90° x 60°	90° x 60°
Crossover frequency	kHz	1.3	1.6
Recommended HP filter		35Hz - 24dBoct	45Hz - 24dBoct
Recommended external filter		-	-
Input connectors		2 x Speakon	2 x Speakon
Net dimensions (WxHxD)	mm inch	482x757x427 19x29.8x16.8	407x634x370 16x24.9x14.5
Net weight	Kg / Lb	26 / 57.3	16 / 35.2
Transport dimensions (WxHxD)	mm inch	520x867x600 20.4x34.1x23.6	495x720x470 19.5x28.3x18.5
Transport weight	Kg / Lb	28.5 / 62.8	18.5 / 40.8

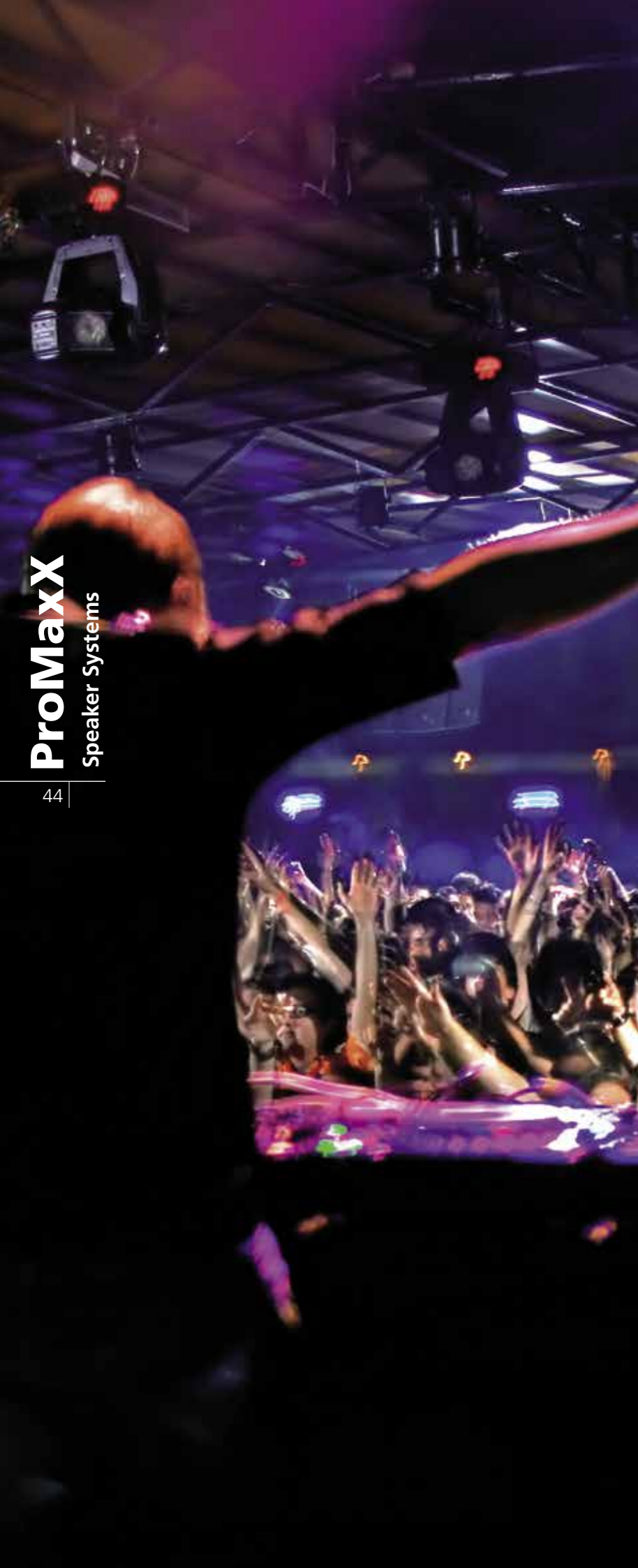
Accessories page 77	HiMaxX 60a	HiMaxX 40a	HiMaxX 100Sa	HiMaxX 100Sa with wheels
Nylon cover	V 33 15777	V 29 10186	V 56 29846	HM-CH 100 37049
Directional wall mount bracket	SJ-8 18614	BOX 100 10187		
Wall metal bracket to mount in vertical position	BOX 105 15772	BOX 101 10188		
4 wheels kit: 2 with brake 80mm ø			KW-HM 80 30423	



SPEAKER SYSTEMS | 43



ProMaxX



THE NEW PROMAXX BY FBT REPRESENTS THE NEXT STEP IN THE EVOLUTION OF A PORTABLE SOUND CLASSIC

With a specially developed polypropylene cabinet and stylish full grille aesthetic, the new ProMaxX by FBT represents the next step in the evolution of a portable sound classic.

Equipped with custom FBT speakers complete with B&C's renowned compression driver technology, **PROMAXX combines true made-in-Italy quality and style.** At its heart is a purpose-built FBT amplifier module with a switch-mode power supply. For the low frequency section, 700W RMS is driven via a highly efficient Class-D topology, boasting extremely low THD. For HF, meanwhile, 200W RMS is delivered by a Class-H / AB design chosen to ensure the highest definition of audio performance at high frequencies.

Also onboard is a powerful digital signal processing (DSP) platform made available to users of all levels thanks to an intuitive graphical user interface. Located on the rear of the enclosure, the menu-driven system is navigated via a single rotary control with push-to-select functionality. Users can choose between 6 equalizer presets, each carefully designed by FBT engineers to ensure that every application is catered for (see below). Additionally, 2 preset slots are available for users to form their own designs, using 5 parametric equalizers per slot. Also available is a high-pass filter, a mic/line selector, low, mid and high tone settings and an optional delay of between 0 and 3.5 metres. Finally, users can exclusively choose between two limiter modes, MAX-SPL or MAX-QUALITY, to best suit their performance. The PROMAXX feature-set is matched by the enclosure's versatility, with options for pole-mounting, wall-hanging, suspension or even deployment in an array. The result is the most accessible PROMAXX yet.



Powerful and Versatile - Lightweight - Increased SPL - DSP with 8 presets

Presets for every occasion

PROMAXX offers 6 presets to cater for a broad variety of uses, each crafted by FBT engineers. Employing powerful DSP, the presets ensure reliability while eliminating distortion.

ORIGINAL / LIVE The renowned, smooth FBT sound

VOCAL A special EQ setting to maximise speech intelligibility

DJ Designed to keep the energy high and your audience dancing

TOURING The reliability and the roar of the industry's most popular touring systems

LOUDNESS The ultimate preset for listening at a medium or low volume

WARM A special setting to emphasise full-bodied, low-mid frequencies.

Two ergonomic carrying handles, **M10 fly points**, top-hat speaker stand socket.

2 - way enclosures have 3 monitor tapers for use as a floor wedge at 12°, 40°, 55°, providing extraordinary versatility **for monitor application.**



Active ProMaxX

2-way, bi-amplified, bass reflex design cabinet

Biamped: 700W RMS LF, 200W RMS HF, power amplifiers in Class D for LF and in Class H/AB for HF with switch mode power supplies

Digital signal processor with graphic display

Control Panel features balanced XLR/Jack input, XLR LINK OUT, 2 x Volume, RCA Stereo input, DSP display with rotative encoder and push

2 x M10 suspension points, 35mm (1,3/8") top-hat speaker stand socket, wall bracket mount flange plate

90°H x 60°V constant directivity horn

Front of House or Stage Floor Monitor: with 12°, 40° and 55° monitoring angles

Passive ProMaxX

Built-in passive crossover with soft-trip protection for the LF woofer and HF driver

Speakon NL-4 IN and LINK OUT connectors



ProMaxX 114a

Processed Active Speaker
700W + 200W - 135.5dB SPL

- **355mm (14") LF neodymium magnet woofer with 75mm (3") voice coil, custom made for FBT by B&C**
- **35mm (1,4") exit throat B&C HF compression driver** with 64mm (2,5") voice coil
- Frequency response from 45Hz to 20 kHz
- **Compact Dimensions:** ProMaxX 114a uses the same size gas-injected polypropylene molded enclosure as the ProMaxX 112a, but features our
- **14" LF Woofer** for lower frequency SPL
- **Full grille design with black acoustic cloth**
- Extremely light, only 17,4kg / 40.78lb

ProMaxX 114

Passive reinforcement speaker
700W / 8ohm - 132dB SPL



ProMaxX 112a

Processed Active Speaker
700W + 200W - 133dB SPL

- **320mm (12") LF magnet woofer with 64mm (2.5") voice coil, custom made for FBT**
- **25mm (1") exit throat B&C HF magnet compression driver** with 34mm (1.4") voice coil
- Frequency response from 48Hz to 20KHz
- Sturdy, gas-injected polypropylene molded enclosures, engineered to contain undesired resonance
- **Full grille design with black acoustic cloth**
- Extremely light only 14.8Kg/32.62lb

ProMaxX 112

Passive reinforcement speaker
400W / 8ohm - 129dB SPL



ProMaxX 110a

Processed Active Speaker
700W + 200W - 131dB SPL

- **250mm (10") LF magnet woofer with 50mm (2") voice coil, custom made for FBT**
- **25mm (1") throat exit B&C HF magnet compression driver** with 34mm (1.4") voice coil
- Frequency response from 58Hz to 20KHz
- Sturdy, gas-injected polypropylene molded enclosures, engineered to contain undesired resonance
- **Full grille design with black acoustic cloth**
- Extremely light only 10.3kg/22.70lb

ProMaxX 110

Passive reinforcement speaker
300W / 8ohm - 127dB SPL



ProMaxX 15Sa

Processed Active Subwoofer
1200W - 136dB SPL

- **Compact band-pass** design subwoofer with **high SPL** and punch
- 380 mm (15") high excursion woofer with 76 mm (3") voice coil, **custom made for FBT by B&C**
- Frequency response from 38Hz to 120Hz
- **1200W RMS Class D** power amplifier with **switch mode power supply**
- **Digital Signal Processor with 8 presets**, 2 equalization with 4 LPF different frequency
- Control Panel with XLR input and link out, Volume, EQ Presets, Delay, Phase Switch 0°-180°, Ground-Lift Switch
- 15 mm (5/8") **Baltic birch plywood cabinet** with scratch & textured resistant paint finish
- **M20** (20 mm) top mount speaker stand socket, two aluminum carrying handles
- Provides additional low frequency reinforcement when used along with the ProMaxX speakers





Model		ProMaxX 114a	ProMaxX 112a	ProMaxX 110a	ProMaxX 155a
Configuration	way	2	2	2	1
Built-in amplifier cont. LF/HF	W RMS	700/200	700/200	700/200	800
Built-in amplifier max. LF/HF	W RMS	-	-	-	1200
Built-in amplifier max. peak LF/HF	W	1400/400	1400/400	1400/400	2400
Frequency response	@-6dB	45Hz - 20KHz	48Hz - 20KHz	58Hz - 20KHz	38Hz - 120Hz
Low frequency woofer	inch	14 - 3 coil neodymium	12 - 2.5 coil	10 - 2 coil	1x15 - 3 coil neodymium
High frequency driver	inch	1,4 - 2,5 coil	1 - 1,4 coil	1 - 1,4 coil	-
Maximum SPL cont/peak	dB	127,5 / 135,5	126 / 133	124 / 131	132 / 136 half-space
Dispersion	H x V	90° x 60°	90° x 60°	90° x 60°	omnidirectional
Input impedance	kOhm	22	22	22	22
Crossover frequency	kHz	-	-	-	preset dependant
AC Power requirements	VA	640	640	640	640
Input connectors		XLR with loop, RCA ST	XLR with loop, RCA ST	XLR with loop, RCA ST	XLR with loop
Power cord	m/ft	5 / 16,4	5 / 16,4	5 / 16,4	5/16,4
Net dimensions (WxHxD)	mm inch	402x644x345 15,8x25,4x13,6	402x644x345 15,8x25,4x13,6	320x550x275 12,6x21,6x10,8	507x585x605 20x23x23,82
Net weight	kg/lb	17.5 / 40.78	14.8 / 32.62	10.3 / 22.70	31 / 68
Transport dimensions(WxHxD)	mm inch	500x745x440 19,7x29,3x17,3	500x745x440 19,7x29,3x17,3	400x630x360 15,7x24,8x14,2	615x670x715 24,2x26,4x28,2
Transport weight	kg/lb	20.1 / 44.31	17.8 / 39.24	12.8 / 28.21	35 / 77

Model		ProMaxX 114	ProMaxX 112	ProMaxX 110
Configuration	way	2	2	2
Recommended amplifier	W RMS	700	400	300
Long term power	W	350	200	150
Short term power IEC 268-5	W	1400	800	600
Nominal impedance	Ohm	8	8	8
Frequency response	@-6dB	50Hz - 18KHz	55Hz - 18KHz	60Hz - 18KHz
Low frequency woofer	inch	14 - 3 coil - neodymium	12 - 2.5 coil	10 - 2 coil
High frequency driver	inch	1.4 - 2.5 coil	1 - 1.4 coil	1 - 1.4 coil
Sensitivity (@1W/1m)	dB	100	99	97
Maximum SPL cont/peak	dB	128 / 132	125 / 129	122 / 127
Dispersion	H x V	90° x 60°	90° x 60°	90° x 60°
Crossover frequency	kHz	1.3	1.6	1.8
Recommended HP filter		40hz - 24dboct	45hz - 24dboct	50hz - 24dboct
Input connectors		2 x Speakon NL4 in & throu	2 x Speakon NL4 in & throu	2 x Speakon NL4 in & throu
Net dimensions (WxHxD)	mm inch	402x644x345 15,8x25,4x13,6	402x644x345 15,8x25,4x13,6	320x550x275 12,6x21,6x10,8
Net weight	kg/lb	15 / 33.06	13.4 / 29.54	8.9 / 19.62
Transport dimensions (WxHxD)	mm inch	500x745x440 19,7x29,3x17,3	500x745x440 19,7x29,3x17,3	400x630x360 15,7x24,8x14,2
Transport weight	kg/lb	18 / 39.68	16.4 / 36.15	11.4 / 25.13

Accessories page 77	ProMaxX 114a	ProMaxX 112a	ProMaxX 110a	ProMaxX 155a	ProMaxX 155a with wheels
Nylon cover	V 64 33326	V 64 33326	V 63 33325	V 65 33327	PM-CH 155 37050
Wall metal bracket to mount in horizontal position	BOX 128 33329	BOX 128 33329	BOX 127 33328		
4 wheels kit: 2 with brake 80mm ø				KW-HM 100 30423	

SPEAKER SYSTEMS | 49



Evo²MaxX



The Second generation of an International Best Seller

Evolving from the FBT EvoMaxX Series of loudspeakers, FBT Evo²MaxX speakers feature totally new Digital Sound Processing resulting in improved sound quality and SPL, especially in bass reproduction at high volume. The sound is more relaxing and natural and the four new DSP presets provide quick dynamic equalization and protection contours for any acoustically challenging venue. Other exciting features are high efficiency and excursion woofers, powerful Class D amplifiers with an extremely low noise floor.

Alongside these key performance improvements, FBT has been inspired to develop the Evo²MaxX Series by one very important goal – offering the customer more value for money. Evo²MaxX lightweight yet sturdy polypropylene cabinets feature a monitor taper designed to ensure that they perform with excellence no matter whether they are used at front of house for a main sound system, as stage floor monitors or within permanent installations.



- Sturdy, gas-injected polypropylene molded enclosures, engineered to contain undesired resonance
- High efficiency loudspeakers custom made for FBT with a weather resistant coating, allowing use in covered outdoor applications
- **B&C HF** compression drivers
- **Latest Class D, 400W LF and 100W HF** power amplifiers with **high efficiency switch mode power supplies**. These amplifiers boast an extremely lightweight design with passively cooled circuitry, meaning no noisy fans!
- **New digital signal processor with dynamic equalizations and sophisticated dynamic limiters**
- **four improve sound quality and SPL granting reliable and distortion-free audio reproduction**
- **New 4 DSP presets for improved versatility and ease of use**
- **Premium sound quality as results of extensive listening test**
- **High SPL** thanks to FBT's new digital limiter algorithms and high power class D amplifier
- Ergonomic carrying handles, M10 fly points, a top-hat speaker stand socket and a stage monitor taper - all included to ensure superb versatility for live sound events and permanent installations.

Evo²MaxX 6a
400+100W
Evo²MaxX 6
400W



Evo²MaxX 4a
400+100W
Evo²MaxX 4
300W



Evo²MaxX 2a
400+100W
Evo²MaxX 2
250W



More powerful Class D amplifiers - Extra lightweight polypropylene cabinets - Higher SPL for optimal audio reproduction
New DSP with four EQ presets - More value for the money

Evo² MaxX 4



Hi MaxX 100 Sa

Perhaps best of all the fact that Evo²MaxX owners can enjoy four loudspeakers in one thanks to FBT's **New four factory DSP presets**. The result of hundreds of hours of development time in FBT's dedicated R&D facility, the presets optimize the Evo²MaxX range to accommodate a vast range of applications.

The presets include:
ORIGINAL: Corresponding FBT benchmark sound for use in general applications
FLOOR/VOCAL: The Evo²MaxX immediately becomes an ideal stage monitor. Also suited for high clarity and intelligibility vocal reproduction.
BOOST/LOUNGE: Providing loudness contour with increased bass response for a relaxing and very enjoyable listening, especially at low and medium volume
CLUB/DJ: Providing all the punch and full-bodied response required by DJ users, suitable for high volume DISCO and PARTY applications



Active Evo²MaxX

2-way, bi-amplified, bass reflex design cabinet

Biamped: 400w RMS LF, 100w RMS HF, Class D power amplifiers with switch mode power supplies

Digital Signal Processor with 4 Equalization Presets

Sturdy gas-injected polypropylene molded enclosure with two integrated handles and Stage Floor Monitor taper

25 mm (1") exit throat **B&C HF compression driver**

Control Panel: features balanced XLR/Jack input and XLR link out, Volume, EQ Presets, HP Filter, 3 status LED indicators,

90°H x 60°V Constant Directivity Horn

Enclosure suitable for stacking

Passive Evo²MaxX

Built-in passive crossover with soft-trip protection for the LF woofer and HF driver

Speakon NL-4 IN and LINK OUT connectors



Evo²MaxX 6a

Processed Active Speaker
400W + 100W RMS - 130dB SPL

- **380 mm (15")** LF woofer with 64 mm (2.5") voice coil
- Frequency response from 42Hz to 20 kHz
- 4 x **M10** suspension points, 35 mm (1 3/8") top-hat speaker stand socket, wall bracket mount flange plate
- Extremely light, only 24.4 Kg / 53.8 Lb



Evo²MaxX 6

Passive Reinforcement Speaker
400W/8ohm - 130dB SPL



Evo²MaxX 4a

Processed Active Speaker
400W + 100W RMS - 130dB SPL

- **320 mm (12")** LF woofer with 64 mm (2.5") voice coil
- Frequency response from 50Hz to 20 kHz
- 4 x **M10** suspension points, 35 mm (1 3/8") top-hat speaker stand socket, wall bracket mount flange plate
- Extremely light, only 15.6 Kg / 34.4 Lb

Evo²MaxX 4

Passive Reinforcement Speaker
300W/8ohm - 128dB SPL



Evo²MaxX 2a

Processed Active Speaker
400W + 100W RMS - 128dB SPL

- **250 mm (10")** LF woofer with 50 mm (2") voice coil
- Frequency response from 58Hz to 20 kHz
- 2 x **M10** suspension points, 35 mm (1 3/8") top-hat speaker stand socket, wall bracket mount flange plate
- Extremely light, only 12 Kg / 26.5 Lb

Evo²MaxX 2

Passive Reinforcement Speaker
250W/8ohm - 125dB SPL





Model		Evo²MaxX 6a	Evo²MaxX 4a	Evo²MaxX 2a
Configuration	way	2	2	2
Built-in amplifier cont. LF/HF	W RMS	350/80	350/80	350/80
Built-in amplifier max. LF/HF	W RMS	400/100	400/100	400/100
Built-in amplifier max. peak LF/HF	W	800/200	800/200	800/200
Frequency response	@-6dB	42Hz - 20KHz	50Hz - 20KHz	58Hz - 20KHz
Low frequency woofer	inch	15 - 2.5 coil	12 - 2.5 coil	10 - 2 coil
High frequency driver	inch	1 - 1.7 coil	1 - 1.4 coil	1 - 1.4 coil
Maximum SPL cont/peak	dB	126 / 130	124 / 130	122.5 / 128
Dispersion	H x V	90° x 60°	90° x 60°	90° x 60°
Input impedance	kOhm	22	22	22
Crossover frequency	kHz	1.6	1.6	1.8
AC Power requirements	VA	450	450	450
Input connectors		XLR with loop	XLR with loop	XLR with loop
Power cord	m / ft	5 / 16.4	5 / 16.4	5 / 16.4
Net dimensions (WxHxD)	mm inch	482x757x399 19x29.8x15.7	407x634x330 16x25x13	352x550x307 13.9x21.6x12.1
Net weight	Kg / Lb	24.4 / 53.8	15.6 / 34.4	12 / 26.5
Transport dimensions (WxHxD)	mm inch	595x878x515 23.4x34.6x20.3	510x704x410 20.1x29.1x16.1	435x630x395 17.1x24.8x15.5
Transport weight	Kg / Lb	28.7 / 63.2	18 / 39.6	14 / 30.86

Model		Evo²MaxX 6	Evo²MaxX 4	Evo²MaxX 2
Configuration	way	2	2	2
Recommended amplifier	W RMS	400	300	250
Long term power	W	200	150	125
Short term power IEC 268-5	W	800	600	500
Nominal impedance	Ohm	8	8	8
Frequency response	@-6dB	48Hz - 18kHz	55Hz - 18kHz	60Hz - 18kHz
Low frequency woofer	inch	1x15 - 2.5 coil	1x12 - 2.5 coil	1x10 - 2 coil
High frequency driver	inch	1 x 1 - 1.7 coil	1 - 1.4 coil	1 - 1.4 coil
Sensitivity (@1W/1m)	dB	99	98	97
Maximum SPL cont/peak (Bi-Amp)	dB	126 / 130	124 / 128	121 / 125
Dispersion	H x V	90° x 60°	90° x 60°	90° x 60°
Crossover frequency	kHz	1.3	1.6	1.8
Recommended HP filter		40Hz - 24dboct	45Hz - 24dboct	50Hz - 24dboct
Input connectors		2 x Speakon NL4 in & thru	2 x Speakon NL4 in & thru	2 x Speakon NL4 in & thru
Net dimensions (WxHxD)	mm inch	482x757x399 19x29.8x15.7	407x634x330 16x25x13	352x550x307 13.9x21.6x12.1
Net weight	Kg / Lb	23.9 / 52.7	16.1 / 35.4	11.8 / 26
Transport dimensions(WxHxD)	mm inch	595x878x515 23.4x34.6x20.3	510x704x410 20.1x29.1x16.1	435x630x395 17.1x24.8x15.5
Transport weight	Kg / Lb	28.2 / 62.2	18.5 / 40.7	14.4 / 31.7

Accessories page 78		Evo²MaxX 6a	Evo²MaxX 4a	Evo²MaxX 2a
Nylon cover		V 33 15777	V 29 10186	V 30 13349
Wall metal bracket to mount in horizontal position		BOX 104 15771	BOX 100 10187	BOX 102 13351
Wall metal bracket to mount in vertical position		BOX 105 15772	BOX 101 10188	



NEW J SERIES - MORE TECHNOLOGY FOR IMPROVED PERFORMANCE AND QUALITY VALUE FOR MONEY

The new **J series** is a technologically advanced range of products that improves on the performance of the previous Jolly line. The new **J series** is a competitive, value for money range of speakers.

The range is based on the development of three new high efficiency class-D amplifiers with power specifications of 350 + 100W for the **J 15A**, **J 12A** and **DJ 15A**, 200 + 50W for the **J 8A** and 80 + 40W for the **J 5A**.

These amplifiers have been designed 'from the ground up' in FBT's R&D laboratories. The largest amplifier model that equips the **J 15A**, **J 12A** and **DJ 15A** has a switch mode power supply as well as a digital signal processor with 4 pre-sets (ORIGINAL/FLOOR-VOCAL/BOOST-LOUNGE/CLUB-DJ).

The **J 8A** and **J 5A** amplifiers have toroidal transformer power supplies. The **J 8A** has a digital signal processor with 2 pre-sets (ORIGINAL/BOOST), whilst the **J 5A** has analog signal processing.

The speakers have been completely redesigned, introducing the technological developments of recent years to achieve a far superior efficiency and linearity.

Following from the new J series, FBT bring you the **DJ 15A**, designed with today's modern DJ in mind. The **DJ 15A** has invaluable features allowing quality audio playback using our revolutionary DSP technology. This includes 4 presets enabling the DJ to change the sound of their music to suit the environment they play within.

These DSP presets will allow the DJ's audience to enjoy improved sound quality and SPL, especially in bass reproduction at high volume. The **DJ 15A** also has another useful feature for DJs, including a two channel input mixer allowing

the DJ to plug a music source and microphone direct into the speaker, giving separate control over volume for both devices. You can also daisy chain these speaker together if required. Ideal for many application of today's modern DJ.

J 15A
350+100W
J 15
300W
DJ 15A
350 + 100W



J 12A
350+100W
J 12
300W



J 8A
200+50W
J 8
160W



J 5A
80+40W
J 5
80W
J 5T
50W



A multipurpose performer: J speakers are versatile and easy to use in applications like Band PA, DJ, personal monitor, stage performance, theatres and halls, clubs, gyms, bars and more.

A comprehensive line to fulfill all professional audio needs



S/J8
Adjustable wall mount stand



S/J5
Adjustable wall mount stand



BOX 112
Horizontal wall mounting bracket



S/J8U
Wall mounting bracket



S/J5U
Wall mounting bracket



J 5AW



Active J

2-way bi-amplified system in Bass-Reflex

Polypropylene enclosure with integrated handle except J 5A/5

2 x M10 anchoring points (**15A, 12A, DJ 15A**), 2 x M6 suspension points (**8A, 5A**)

25mm (1") HF custom compression driver (**15A, 12A, 8A, DJ 15A**)

90°H x 60°V constant directivity horn (**15A, 12A, 8A, DJ 15A**)

HP-filter for use with a Subwoofer

Control Panel: XLR/Jack input and XLR link, Mic/Line switch, Level, HP filter, EQ presets (**J 15, J 12, J 8**) Combo XLR/Jack and XLR link, Mic/Line switch, Level, HP filter (**J 5**)

Passive J

Internal passive crossover filter with "soft-trip" protection circuits on woofer and compression driver

Linear frequency response over the entire dispersion angle



J 15A

Processed Active Monitor
350W+ 100W RMS - 129dB SPL

- 380 mm (15") custom woofer with improved efficiency and linearity
- 350Wrms class D amplifier for LF and 100Wrms for HF.
- High efficiency switch mode power supply
- On-board Digital Signal processing with dynamic equalizations and protections for high SPL and high reliability.
- 4 DSP preset for maximum acoustical flexibility

J 15

Sound Reinforcement Monitor
300W - 127dB SPL

- NL-4 Neutrik™ Speakon input and link connectors



DJ 15A

Processed Active Monitor
350W+ 100W RMS - 129dB SPL

- Same woofer, amplifier, power supply and On-Board Digital Signal processing as J 15A
- 4 DSP preset specially designed for DJ users
- Two channels input mixer with stereo/mono OUT
- Input panel with XLR/jack input and XLR Link, Mic/Line switch, Level, HP filter, 4 Preset Switch, Stereo RCA input, level, XLR OUT for daisy-chaining with Stereo/Mono switch selector



J 12A

Processed Active Monitor
350W + 50W RMS - 128 dB SPL

- 320 mm (12") custom woofer with improved efficiency and linearity
- 350Wrms class D amplifier for LF and 100Wrms for HF.
- High efficiency switch mode power supply
- On-board Digital Signal processing with dynamic equalizations and protections for high SPL and high reliability.
- 4 DSP preset for maximum acoustical flexibility

J 12

Sound Reinforcement Monitor
300W - 127dB SPL

- NL-4 Neutrik™ Speakon input and link connectors



J 8A

Processed Active Monitor
200W+ 50W RMS - 124dB SPL

- 200 mm (8") custom woofer with improved efficiency and linearity
- 200Wrms class D amplifier for LF and 50Wrms for HF.
- Low noise toroidal transformer power supply
- On-board Digital Signal processing with dynamic equalizations and protections for high SPL and high reliability.
- 2 DSP preset for maximum acoustical flexibility
- Available in white colour **J 8AW**

J 8

Sound Reinforcement Monitor
160W - 121.5dB SPL

- NL-4 Neutrik™ Speakon input and link connectors
- Available in white colour **J 8W**



J 5A

Processed Active Monitor
80W+ 40W RMS - 117dB SPL

- 130 mm (5") custom woofer with improved efficiency and linearity
- 25 mm (1") neodymium silk dome tweeter with soft compression and phase plug
- 80Wrms class D amplifier for LF and 40Wrms for HF
- Low noise toroidal transformer power supply
- On-board analog signal processing with limiter for high SPL and high reliability
- Available in white colour **J 5AW**

J 5

Sound Reinforcement Monitor
80W - 117dB SPL

- Input panel with jack and terminal connector for bare wires
- Available in white color **J 5W**

J 5T

Sound Reinforcement Monitor
50W - 114dB SPL

- 4 position volume selector: 3W - 12,5W - 25W - 50W / 100V
- Input panel with terminal connector for bare wires
- Also available in white colour **J 5TW**





SPEAKER SYSTEMS | 61

Model	J15a	J12a	J8a	J5a	DJ 15a
Configuration	way 2	2	2	2	2
Built-in amplifier cont. rms LF/HF	W 300/70	300/70	150/40	60/30	300/70
Built-in amplifier max. rms LF/HF	W 350/100	350/50	200/50	80/40	350/100
Built-in amplifier max. peak LF/HF	W 700/200	700/200	400/100	160/80	700/200
Frequency response	@-6dB 48Hz - 20KHz	50Hz - 20KHz	60Hz - 20KHz	80Hz - 20KHz	48Hz - 20KHz
Low frequency woofer	inch 15 - 2 coil	12 - 2 coil	8 - 1.7 coil	5 - 1 coil	15 - 2 coil
High frequency driver	inch 1 - 1 coil	1 - 1 coil	1 - 1 coil	1 dome - 0.75coil	1 - 1 coil
Maximum SPL cont/peak	dB 125 / 129	124 / 128	120 / 124	113 / 117	125 / 129
Dispersion	H x V 90° x 60°	90° x 60°	90° x 60°	90° x 90°	90° x 60°
Input impedance	kOhm 22	22	22	22	22
Crossover frequency	kHz 1.8	2	2.5	3.5	1.8
AC Power requirements	VA 400	400	160	75	400
Input connectors	XLR-jack with loop	XLR-jack with loop	XLR-jack with loop	XLR combo with loop	XLR-jack with loop St. RCA, XLR out
Power cord	m / inch 5 / 16.4	5 / 16.4	5 / 16.4	5 / 16.4	5 / 16.4
Net dimensions (WxHxD)	mm 410x663x387 inch 16,14x26,10x15,23	410x663x387 16,14x26,10x15,23	255x415x245 10,03x16,33x9,64	170x275x180 6,69x10,82x7,08	410x663x387 16,14x26,10x15,23
Net weight	kg/lb 14 / 30.86	13.7 / 30.2	8.2 / 18.7	3.4 / 7.49	14 / 30.86
Transport dimensions(WxHxD)	mm 495x740x475 inch 19.48x29.13x18.70	495x740x475 19.48x29.13x18.70	330x480x320 12.99x18.89x12.59	240x345x235 9.44x13.58x9.25	495x740x475 19.48x29.13x18.70
Transport weight	kg/lb 17.1 / 37.69	16.8 / 37.03	9.7 / 21.38	4.2 / 9.25	17.1 / 37.69

Model	J15	J12	J8	J5	J5T
Configuration	way 2	2	2	2	2
Recommended amplifier	W rms 300	300	160	80	50(70/100V)
Long term power	W 150	150	80	40	25
Short term power IEC 268-5	W 600	600	320	160	100
Nominal impedance	Ohm 8	8	8	16	16
Frequency response	@-6dB 50Hz - 20KHz	55Hz - 20KHz	65Hz - 20KHz	90Hz - 20KHz	90Hz - 20KHz
Low frequency woofer	inch 15 - 2 coil	12 - 2 coil	8 - 1.7 coil	5 - 1 coil	5 - 1 coil
High frequency driver	inch 1 - 1 coil	1 - 1 coil	1 - 1 coil	1 dome - 0.75coil	1 dome - 0.75 coil
Sensitivity (@1W/1m)	dB 99	98	96.5	94	91
Maximum SPL cont/peak (Bi-Amp)	dB 124 / 127	123 / 127	118.5 / 121.5	114 / 117	111 / 114
Dispersion	H x V 90° x 60°	90° x 60°	90° x 60°	90° x 90°	90° x 90°
Crossover frequency	kHz 1.8	2	2.5	3.5	3.5
Recommended HP filter	40hz - 24dboct	45hz - 24dboct	55hz - 24dboct	80hz - 24dboct	80hz - 24dboct
Input connectors	2 x Speakon NL4 in & thru	2 x Speakon NL4 in & thru	2 x Speakon NL4 in & thru	1 x jack + terminal strip	terminal strip
Net dimensions (WxHxD)	mm 410x663x387 inch 16,14x26,10x15,23	410x663x387 16,14x26,10x15,23	255x415x245 10,03x16,33x9,64	170x275x180 6,69x10,82x7,08	170x275x180 6,69x10,82x7,08
Net weight	kg/lb 14.7 / 32.4	14.1 / 31.08	6.6 / 14.55	3.4 / 7.49	3.4 / 7.49
Transport dimensions (WxHxD)	mm 495x740x475 inch 19.48x29.13x18.70	495x740x475 19.48x29.13x18.70	330x480x320 12.99x18.89x12.59	240x345x235 9.44x13.58x9.25	240x345x235 9.44x13.58x9.25
Transport weight	kg/lb 17.8 / 39.24	17.2 / 37.91	8.1 / 17.85	4.2 / 9.25	4.2 / 9.25

Accessories page 78	J15a	J12a	J8a	J5a	DJ 15a
Nylon cover	V 38 18614	V 38 18614	V 37 18613	V 36 18612	V 38 18614
Directional wall mount bracket			S-J 8/WHT 18576 Black 39177 White	S-J 5/WHT 18522 Black 38321 White	
Wall metal bracket to mount in horizontal position	BOX 112 18602	BOX 112 18602	S-J 8U/WHT 18568 Black 38464 White	S-J 5U/WHT 18523 Black 38465 White	
Tripod speaker stand				MS 30BK 06076	
Adjustable metal "T" stand for N. 2			SJ-8T 18569	SJ-5T 18527	
Adapter from ø 35mm to ø 25mm			AJ-8 18570	AJ-5 18532	
White metal frame for ceiling/wall installation				SJ-5C W 18526	



X-LITE

THE X-LITE SERIES IS TRULY VERSATILE AND PROFESSIONAL

Constructed out of polypropylene enclosures, the X-LITE series features a sleek design including 3 x carrying handles and 4 x M10 flying points.

In addition, the full front grille provides complete protection, delivering elegance and sturdiness.

Features include built-in Class D amplifier modules providing an amazing 1000W of power to satisfy the most demanding applications, whilst the user-friendly DSP allows 4 x EQ preset selection to perfectly tailor the performance of your X-LITE to your sound requirements. In addition, the X-LITE series is truly versatile, offering a professional control panel that allows you to set up configurations with or without subs.

Even better - if you do want to extend the X-LITE low frequency response, you can do so with the dedicated X-SUB 18" powered subwoofer.



Integrated handles, **M10 rigging points** for suspended installation, 35mm stand socket and monitor taper, all included to make the speaker adaptable to any application

X-LITE 15A
1000W
X-LITE 15
400W



X-LITE 12A
1000W
X-LITE 12
300W



X-LITE 10A
1000W
X-LITE 10
250W



Your music, your performance or your installation can count on FBT's new X-LITE series of portable powered speaker systems.

Common features:

- Polypropylene molded enclosure designed to eliminate unwanted resonances
- Custom FBT Speakers with high linear excursion capability and efficiency
- Compression driver with 25mm (1") throat and 35mm (1.4") voice coil
- 1000W, 2-channel amplifier in Class D for LF and in Class AB for HF with a high dynamics response for a pleasant sound at high volume
- Universal switching mode power supply 100-240VAC
- DSP with 4 EQ presets designed to tailor the sound of the speaker to various applications and installation environments
- Advanced algorithms for filtering and equalization which alter the dynamics of the low frequency energy according to the selected preset, allowing distortion-free high SPL performance
- Control panel with XLR input and link out, 6.3mm jack stereo input with volume, stereo RCA input with volume, XLR output selector coupled with stereo / mono, HP filter on / off, mic / line, DSP preset selector

- Integrated mixer with two stereo channels, one channel mic / line input and an output coupled XLR mono / stereo to revive the other channel of the stereo signal to another speaker.
- The presence of 4 presets managed by DSP allows you to modify the response of the speaker in a much more accurate way compared to standard tone controls. In addition, each preset has been designed and optimized in an anechoic chamber to deliver the best possible performance for each application.
- ORIGINAL / LIVE: The ideal preset for live sound reinforcement
- FLOOR / VOCAL: A preset to transform your X-LITE cabinet for use as a stage monitor or for vocals
- CLUB: A special preset to deliver a rich, deep bass response that stays easy on listener's ears
- DJ: A preset designed to bring out the best in electronic dance music



Monitor 30°



Monitor 45°



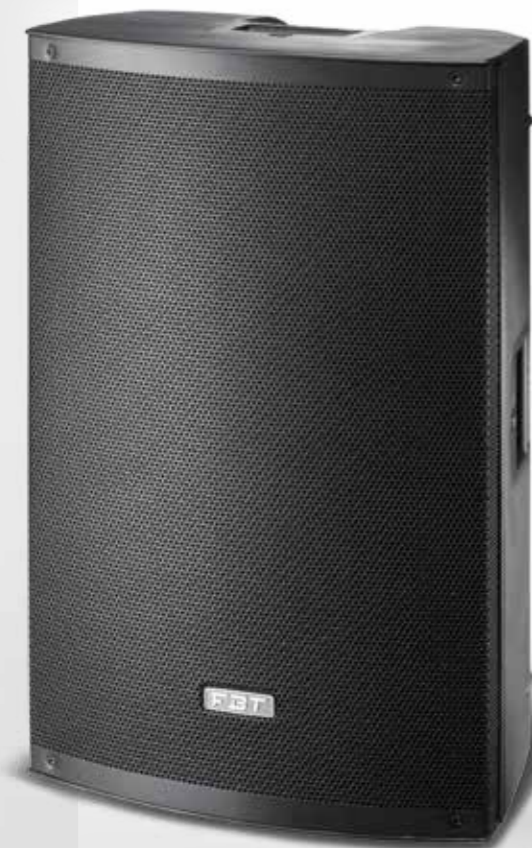
X-LITE 15A

Processed Active Speaker
1000W - 128dB SPL

- 2-way bi-amplified bass reflex
- FBT Custom 380mm (15") LF woofer with 64mm (2.5") voice coil
- FBT 25mm (1") throat /35mm (1.4") voice coil HF compression driver
- 42Hz to 20KHz Frequency Response
- 90° H x 60° V constant directivity horn
- 30° or 45° monitor taper

X-LITE 15

Passive Reinforcement Speaker
400W/8ohm - 126dB SPL



X-LITE 12A

Processed Active Speaker
1000W - 127dB SPL

- 2-way bi-amplified bass reflex
- FBT Custom 320mm (12") LF woofer with 50mm (2") voice coil
- FBT 25mm (1") throat /35mm (1.4") voice coil HF compression driver
- 50Hz to 20KHz Frequency Response
- 90° H x 60° V constant directivity horn
- 30 or 45° monitor taper

X-LITE 12

Passive Reinforcement Speaker
300W/8ohm - 125dB SPL



X-LITE 10A

Processed Active Speaker
1000W - 126dB SPL

- 2-way bi-amplified bass reflex
- FBT Custom 250mm (10") LF woofer with 50mm (2") voice coil
- FBT 25mm (1") throat /35mm (1.4") voice coil HF compression driver
- 58Hz to 20KHz Frequency Response
- 90° H x 60° V constant directivity horn
- 30 or 45° monitor taper

X-LITE 10

Passive Reinforcement Speaker
250W/8ohm - 123dB SPL



X-SUB 18SA
1200W
X-SUB 15SA
1200W

INTEGRATED | 67
SOUND
SYSTEMS



Model		X-LITE 15A	X-LITE 12A	X-LITE 10A
Configuration	way	2	2	2
Built-in amplifier max LF/HF	W	800/200	800/200	800/200
Frequency response	@-6dB	42Hz - 20KHz	50Hz - 20KHz	58Hz - 20KHz
Low frequency woofer	inch	15 - 2.5 coil	12 - 2 coil	10 - 2 coil
High frequency driver	inch	1 - 1.4 coil	1 - 1.4 coil	1 - 1.4 coil
Maximum SPL peak	dB	128	127	126
Dispersion	H x V	90° x 60°	90° x 60°	90° x 60°
Input impedance	kOhm	22	22	22
Input connectors		XLR with loop, Jack ST, RCA ST	XLR with loop	XLR with loop
Power cord	m inch	3 9.8	3 9.8	3 9.8
Net dimensions (WxHxD)	mm inch	433x706,5x400 17.04x27.81x15.74	356x619x357 14.01x24.37x14.05	300x536x301,5 11.81x21.10x11.87
Net weight	kg lb	18 39.68	14.5 31.96	13 28.66
Transport dimensions (WxHxD)	mm inch	520x785x480 20.47x30.90x18.89	450x720x450 17.71x28.34x17.71	380x630x380 14.96x24.80x14.96
Transport weight	kg lb	21.5 47.39	16.9 37.25	15.6 34.39

Model		X-LITE 15	X-LITE 12	X-LITE 10
Configuration	way	2	2	2
Recommended amplifier	W rms	400	300	250
Long term power (1)	W	200	150	125
Short term power (IEC 268-5) (2)	W	800	600	500
Nominal impedance	Ohm	8	8	8
Frequency response	@-6dB	53Hz - 20KHz	56Hz - 20KHz	68Hz - 20KHz
Low frequency woofer	inch	15 / 2.5 coil	12 / 2 coil	10 / 2 coil
High frequency driver	inch	1 / 1.4 coil	1 / 1.4 coil	1 / 1.4 coil
Sensitivity (@1W/1m)	dB	98	97	96
Maximum SPL cont/peak	dB	123 / 126	122 / 125	120 / 123
Dispersion	H x V	90 x 60	90 x 60	90 x 60
Crossover frequency	kHz	2,5	2	1,8
Recommended HP filter		HP 55Hz - 12-24db/oct	HP 45Hz - 12-24db/oct	HP40Hz - 12-24db/oct
Recommended external DSP		FBT DLM26	FBT DLM26	FBT DLM26
Input connectors		2 x SPEAKON	2 x SPEAKON	2 x SPEAKON
Net dimensions (WxHxD)	mm	433x706,5x400 17.04x27.81x15.74	356x619x357 14.01x24.37x14.05	300x536x301,5 11.81x21.10x11.87
Net weight	kg	17.5 38.6	14 30.8	12.5 27.5
Shipping dimensions(WxHxD)	mm	520x785x480 20.47x30.90x18.89	450x720x450 17.71x28.34x17.71	380x630x380 14.96x24.80x14.96
Shipping weight	kg	21 46.3	16.4 36.1	14.5 31.9

Accessories page 78		X-LITE 15	X-LITE 12	X-LITE 10
Nylon cover		XL-C 15 39489	XL-C 12 39490	XL-C 10 39491
U bracket horizontal wall mount		XL-UH 15 38891	XL-UH 12 38890	XL-UH 10 38889
U bracket vertical wall mount		XL-UV 15 38904	XL-UV 12 38903	XL-UV 10 38902



Amico



INTEGRATED SOUND SYSTEM AMICO 10USB

AMICO 10USB is a completely integrated, ready-wired sound system offering a convenient plug and play solution for Houses of Worship, schools, conference halls, DJ sets, sports centers and small musical groups performing live in small to medium sized venues. The mixer, amplification and subwoofer are contained in a single ultra lightweight, yet extremely sturdy polypropylene enclosure. A storage compartment in the rear of the AMICO 10USB houses the two 2-way satellite speakers, allowing the wheeled system to be transported as a one piece unit. AMICO 10USB offers a professional mixing input channels with built-in class D power amplifiers and switch mode power supply. The system is powered by AC mains.

- Analog audio processor with 24dB/oct electronic crossover network and **ADAP** (Advanced Dynamic Active Protection) for total protection of the components
- **3 Class D power amplifiers** with switch mode power supplies to power the subwoofer and the two satellite speakers
- Built-in mixing console with 6 x XLR mic inputs with phantom power supply, 2 x mono inputs and 4 x stereo input channels, 3-band EQ, **99 selectable digital effects** with effects send and return controls
- **USB** input/output to play back music programs/ files from a computer or to record from the master audio output of the AMICO 10 USB to a computer-recording program
- **A quick and easy set-up:** complete system setup in less than 5 minutes! Just connect the satellite speakers to the AMICO 10USB amplifier outputs using the optional Speakon speaker cables and connect the AC power cable to an AC wall outlet
- Multi-function knobs to block, unblock, and remove the cover/ lid transport handle
- **Removable back panel** for access to the satellite speakers' storage compartment. The back panel protects the satellite speakers and keeps them secure when transporting the complete system



Amico 10USB Processed Active Sound System 500W+2x150W RMS - 130dB total SPL

- **3-way, tri-amplified Bass-Reflex** system
- **14 channel mixer with 99 presets digital multieffect** and phantom power
- **USB** connection for music programs in play and record
- USB input/output to play back music programs/ files from a computer or to record from the master audio output of the AMICO 10USB to a computer - recording program
- **Subwoofer:** 380 mm (15") high efficiency and high excursion custom woofer with a 75 mm (3") voice coil
- **2 x Two way satellite speakers:** featuring 165 mm (6.5") woofers with 38 mm (1.5") voice coils, and a 25 mm (1") compression driver coupled to a 90°H x 60°V constant directivity horn
- **500W RMS Class D amplifier** for subwoofer
- **2 x 150W RMS Class D amplifier** for the satellite speakers
- **Switch mode power supply**





Model	AMICO 10 USB	
Configuration	3 WAY / SUB+2SAT	
Internal Amplifiers	W RMS	500 + 2x150
MIXER	channels	2mono+4stereo
Quantity and type	2 x XLR F	
Impedance	kohm	2.2
Max input signal	dBu	0
Max gain	dB	75
Equivalent input noise	dB	-128
CMRR (@ main out, gain 75dB)	dB	-80
Quantity and type	2 x JACK balanced	
Impedance	kohm	33
Max input signal	dBu	30
Max gain (@ main out)	dB	40
High Shelving (@ 12kHz)	dB	±15
Medium Peaking (@ 2.5kHz)	dB	±12
Low Shelving (@ 80Hz)	dB	±15
Quantity and type	4 x XLR F	
Impedance	kohm	22
Max input signal	dBu	0
Max gain	dB	75
Equivalent input noise	dB	-128
CMRR (@ main out, gain 75dB)	dB	-80
Quantity and type	8 x JACK balanced	
Impedance	kohm	22
Max input signal	dBu	30
Max gain (@ main out)	dB	18
High Shelving (@ 12kHz)	dB	±15
Medium Peaking (@ 2.5kHz)	dB	±12
Low Shelving (@ 80Hz)	dB	±15
Impedance	ohms	600
Mx output (Monitor, Eff, Tape In)	dBu	22
Distortion + Noise @ 16	dBu	0.025%
Signal/Noise ratio	dB	96
Frequency response (@ 0 / -1dB)	20Hz-20kHz	
Sample frequency	kHz	48
Frequency response	20Hz-20kHz	

SUB / COMBO	Way	1
Configuration	W RMS	500WSUB+2x150WSAT
Internal amplifier	@-6dB	40Hz-120Hz
Frequency response	dB	97
Sensitivity (@1W, 1m)	dB	124/130
Maximum SPL (cont-peak)	0 x V	omnidirectional
Dispersion	inch	1x15
Low frequency woofer	inch	-
High frequency driver	2 x SPEAKON	
SAT output connectors	2	
SAT	W RMS	150
Internal amplifier / Recommended	ohms	4
Impedance	dB	90Hz-20kHz
Frequency response	dB	93.5
Sensitivity (@1W, 1m)	dB	115/125
Maximum SPL (cont-peak)	0 x V	90° x 60°
Dispersion	inch	1x6.5
Low frequency woofer	inch	1x1
High frequency driver	1 x SPEAKON	
Input connectors	m / inch	5/197
Power supply cable	mm	478x780x433
Net dimensions (WxHxD)	inch	18.8x30.7x17
Net weight	Kg / Lb	45 / 99.20
Transport dimensions (WxHxD)	mm	570x880x570
Transport weight	inch	22.4x36.5x22.4
Optional accessories	Kg / Lb	49 / 108.02
	Carrying cover, twin cables, 2 aluminium stands	

GENERAL SPECIFICATIONS

TOUR TOUGH BUILT, SLEEK DESIGN, IMPRESSIVE SPECS, EXCELLENT COST PER WATT PERFORMANCE, EFFICIENT UNDER ANY APPLICATION

With these credentials, FBT proudly presents the new **AX series of power amplifiers**, the perfect power mates for sound reinforcement speaker systems. The **AX series** consists in four 2HU rack mount models, **from 800 to 3000 watts**, all designed with sophisticated power amp circuits for improved quality, stability and reliability, all equipped with Stereo-Parallel-Bridge operation mode, dB sensitivity switch (26-29-32dB), limiter, ground

lift, XLR/Jack inputs (plus extra RCA input on AX 800), Speakon/Binding posts outputs.

APPLICATIONS

Amplification for live sound reinforcement speaker systems in clubs, discos, piano bar, conference halls, houses of worship, sports arenas, schools, theatres, mobile D.J. use, recording studio monitors, foreground music reproduction, etc.



Model		AX 800	AX 1200	AX 2000	AX 3000
Both channels driven Stereo Continuous 8ohm /Impulsive	1%THD Wrms	230/250	340/350	630/650	880/650
Both channels driven Stereo Continuous 4ohm /Impulsive	1%THD Wrms	350/400	460/600	840/1000	1300/1500
Bridge 8ohm Continuous / Impulsive	W RMS	700/800	920/1200	1680/2000	2600/3000
Frequency Response	@-1dB	20Hz-40kHz	20Hz-40kHz	20Hz-40kHz	20Hz-40kHz
Class	W	AB	H - 2 step	H - 2 step	H - 2 step
Signal to noise ratio	A weight	>100dB	>100dB	>100dB	>100dB
THD	50% Pmax	< 0,03%	< 0,03%	< 0,03%	< 0,03%
Damping factor		> 400	> 400	> 400	> 230
Input Impedance	ohm	20k balanced	20k balanced	20k balanced	20k balanced
Protections		Short circuit / Thermal	Short circuit / Thermal	Short circuit / Thermal	Short circuit / Thermal
Power Supply		120 or 230 Vac 50/60Hz	120 or 230 Vac 50/60Hz	120 or 230 Vac 50/60Hz	120 or 230 Vac 50/60Hz
Power Consumption		1000 VA	1300 VA	2400 VA	3600 VA
Connectors		IN: XRL/Jack OUT: Speakon/ Binding post	IN: XRL/Jack OUT: Speakon/ Binding post	IN: XRL/Jack OUT: Speakon/ Binding post	IN: XRL/Jack OUT: Speakon
Dimensions (WxHxD)	mm inch	482x88x290 19x3.5x11.4	482x88x290 19x3.5x11.4	482x88x290 19x3.5x11.4	482x88x290 19x3.5x11.4

V44
Code 23373
Nylon cover



Amico Kit
Code 20698
Optional carrying bag, speaker stands, speakon-speakon cables



The **DMM 8008** is a high performance 8 input x 8 output digital matrix mixer; Specially designed for commercial and professional application such as Conference rooms, Auditoriums, Sport utility buildings, House of worship, Pubs and Disco. It includes 8 independently switchable Line/ Mic inputs with Phantom power supply, 8 Line outputs, managed by a powerful 48kHz 24 Bit DSP engine, in addition to high performance 24 Bit AD/DA converters. The **DMM 8008** supports a full matrix mixing mode where inputs may be routed/mixed in any ratio to any output. Each Mic/Line input channel provides Lo/Hi pass 1st order filters, 3-band parametric EQ, Noise Gate function and Gain control. In addition Mic inputs include a Feedback Eliminator function, based on a powerful «Pitch Shifting» algorithm,

particularly suitable for voice applications. Automixing function automatically adjusts input level to make operating easier using either NOM (Number of Open Mics) attenuation function or Gain sharing algorithm. In addition Ducking process enforces a «priority order» of open microphones in order that high-priority inputs attenuate lower-priority inputs. Each output offers up to 5-band of parametric equalization, crossover filters, RMS compressor, Peak limiter, Phase and Delay controls; 8 digital In/Out ports are provided for general purpose (preset recall, trigger third parts or device); 8 front knobs provides a quickly way to control input Gain; Up to 32 units can be managed by software applications.



2 AVAILABLE MODE TO MANAGE THE DMM 8008



Via RS 485 / TCP-IP / USB

PC software for system design and real time control.



Via RS 485

Optional Wall Control Panel WP 8008 configurable for global or single zone control.

DMM 8008

- Excellent audio performance with 24 bit converters coupled with 48kHz sample rate
- 8 Mic/Line inputs, 8 outputs with full matrix mixing, 3 band parametric equalization and Low/High pass filters per input channel
- 5 band parametric equalization per output channel; each band can be switched to peaking, Low/High shelving with variable Q response
- Crossover filters with slopes from 6dB/Octave up to 24dB/Octave including Butterworth, Bessel, Linkwitz-Riley
- Gain control, Noise Gate, Feedback eliminator (Mic input only) per input channel
- Each output features a precision dynamic range controller composed of a Peak Limiter and a RMS Compressor with selectable ratio and variable knee
- Automixing functions include: Configurable NOM attenuation, Gain sharing algorithm, Priority Ducking
- Adjustable Delay time up to 380mS per output channel
- Front panel interactive LCD display for local access and configuration
- Front panel 6-led status indicators per In/Out channel
- 8 front knobs available for Mic input Gain control
- 4 input contacts for additional 4 preset selections with priority configuration
- 4 digital output ports for triggering external devices
- Simultaneous control up to 32 units via PC software
- Security lockout
- TCP/IP, RS 485 and USB connection for remote controls

	DMM 8008
AUDIO	
Analog Output	8 electronically balanced (Mic - Line - Unbalanced)
Uscite Analogiche	8 electronically balanced
Maximum Input Level	Line: +14dBu; Mic: -20/0dBu (+6dBu unbalanced)
Mic Input Gain	34dB (22dB analog, 12dB digital)
Maximum Output Level	+14dBu
THD+N	0.005% at 1kHz 0dBu
S/N	>104dBA
Frequency Response	20Hz-20kHz +/-1dB
AD & DA Converters	4 x AK5385B 24bit, 1 x Ak4358 24bit (48kHz)
Phantom Power	48Vdc
DSP & PROCESSING	
DSP Engine	Dream SAM3716, 24bit (data) x 96bit (coeff.)
DSP Resolution	24 x 32 bit for filtering process; 96bits resolution on intermediate computation results
Input Equalization	3-band parametric selected as peaking or Low/High shelving with variable Q per input channel Low/High pass 1st order filter per input channel
Output Equalization	5-band parametric EQ selected as peaking or Low/High shelving with variable Q per output channel
Filter Gain	From -12dBu up to +12dBu by 0.5dBu resolution steps
Center Frequency	Selectable with a 1/24th of octave resolution step from 20Hz up to 20kHz
Filter Q/BW	Q from 0.4 up to 10 by 0.1 resolution steps
Crossover Section HPF/LPF	Butterworth 6/12/18/24dB per octave Bussell, Linkwitz-Riley and custom 12/24dB per octave Filter resolution 1/24th of octave
RMS Compressor and Peak Limiter	Threshold from 14dBu up to -34dBu Attack time from 5ms up to 200ms (1ms resolution up to 20ms, 10ms resolution up to 100ms and 20ms resolution up to 200ms) Release time from 0.1 sec up to 3 sec (0.1 sec resolution) Ratio from 1:1 to 32:1 (compressor only) Adjustable soft or hard knee (compressor only)
Delay	380,998 ms 21 us increment/decrement steps per output channel only
Feedback Eliminator	Pitch shifting algorithm only for Mic input channels
Automixing Functions	NOM attenuation, Gain sharing algorithm and priority ducking processing
GENERAL	
Device Presets	6 user presets + 4 by using S1-S4 digital input ports
Front Panel	2 x 24 character LCD display with white/blue LED backlight 6-LED status indicators (Line, Mic, Mute I/O, Signal, Clip, Limiter) 1-LED indicator Phantom power 6 x front push button (Preset recall, Setup) USB type B connector
Rear Panel	2 x 12 pin Phoenix connector (Mic/Line inputs) 2 x 12 pin Phoenix connector (Line outputs) 2 x 4 pin Phoenix connector (S1-S4 digital input ports - TTL level 0-5V) 2 x 4 pin Phoenix connector (S1-S4 digital output ports - TTL level 0-5V) 2 x RJ45 for RS485 In/Out connection 1 x RJ45 with activity leds for Ethernet connection (10/100 TCP-IP) IEC C13 16A connector; power on/off switch
Optional Device	FBT WP8008 wall panel control
Included Software	PC users interface
Main AC	90-240Vac (50/60Hz) - 40W
Dimensions	19" x 1.75" x 9" (483 x 44 x 229mm) - 1RU
Weight, Net/Shipping	7.71lbs (3.5kg) / 8.82lbs (4kg)

DIGITAL LOUDSPEAKER MANAGEMENT

The DLM26 is a DSP based 2 input x 6 output Digital Loudspeaker management processor, ideally suited for fixed installations and live events. It combines the functions of a multitude of conventional products in a compact 1U unit with extensive PC remote control capabilities.

Features superb audio quality with premium hi-end AKM5392 24bit A/D converters and AKM 4396 24bit D/A converters, carefully optimized double precision signal processing coupled with 24bit conversion ensure a dynamic range >110dB. The unit can work in STANDARD MODE or in DCL MODE. The first mode permits to configure the crossover in 2x2 way + SUB, 2x3 way or 6way, the input L, R, L+R are freely assignable to each output.



In DCL mode the unit can be configured in 3ch DCL, 2ch DCL + 2ch standard, 1ch DCL + 4ch standard. DCL mode means double compressor limiter, each DCL channel have a double band limiter and compressor with assignable LO/HI split frequency. Each input has 5 fully configurable filters, a delay of 288.66ms max in step of 6.8us, gain. Each output has 4 fully configurable filters, a delay of 288.66ms max in step of 6.8us, gain, phase, LO-pass/Hi-pass crossover from 6 to 24db/Oct with standard or custom Q, RMS compressor with soft knee and peak limiter. The 2 input levels are displayed by rows of 6 level LED + 1 clip LED, the 6 output levels are displayed by rows of 5 level LED + 1 clip LED + 1 Limiter LED. The unit has 2 analog inputs, a stereo digital SPDIF input, and 6 analog outputs. Linking functions between inputs and linking functions between outputs are available. The Pc SW for the remote control via RS485 or USB is allowing to connect in net up to 32 units and is allowing to control full parameters of the processor, to show the phase of the filter setting and to adjust graphically the RMS compressor and the Peak limiter. The comprehensive standard specification also include up to 64 memories with security lockout and two password level settings.

DLM26 Digital Loudspeaker Management



Rear panel

Special features:

- Hi-pass/Lo-pass/Shelving custom Q second order filters
- RMS compressor and PEAK limiter on each output channel with time constant and algorithm optimized for speaker thermal and mechanical protection while maximizing the output with no audible distortion
- Input channel L, R or L + R freely assignable to each output channel
- Double Compressor Limiter Mode (DCL) with two band RMS compressor and Peak limiter with adjustable HP / LP split frequency and separate parameter adj. This is an exclusive and very useful feature in general purpose digital processors
- ALL PASS first and second order filters useful for Cardioid SUB configurations, very precise phase crossover alignment, special pattern control array, alignment between different speakers and systems

Inputs / Outputs	XLR balanced +20dbu max level
Total memories	64
THD+N	0.001% at 1kHz 0dBu
S/N	>110dB
Frequency Response	20Hz - 20kHz @ -0.5db
A/D and D/A Resolution	24bits

Filters (5 each in/out)

Type	Peaking EQ, Hi-Shelv 1/2/Q, Lo-Shelv 1/2/Q, HPF 1/2/Q, LPF 1/2/Q, All Pass 1/2, Band pass, Notch
Orders	symmetrical Bell or High/Low Shelving up to second order
Filter gain	-15dBu / +15dBu by 0.5dBu resolution steps
Centre frequency	selectable with a 1/24th of octave resolution steps 20Hz / 20kHz
Filter Q/BW	Q from 0.05 up to 3 by 0.05 resolution steps

Compressors

Threshold:	-10 / 20dbu
Ratio:	1:1 / 32:1
Soft Knee:	0 / 100%
Attack Time:	10ms / 4s
Release Time:	0.1 / 3s

Limiters

Threshold:	-10 / +20dbu
Attack time:	2ms / 50ms
Release Time:	20ms / 200ms

High pass and Low Pass Filters: From 1st order (Butterworth -6dB/Oct) up to 4th Order (Butterworth, Linkwitz or Bessel -24dB/Oct), Custom Q

Filter's setting step: 1/24th of octave

Maximum Delay: 288.66ms by 6.8us increment/decrement step, on each Input and Output channel

Net Dimensions (WxHxD): mm 480 x 40 x 220 - 19" (1U rack)
inch 18.8x1.5x8 - 19" (1U rack)

Net Weight: Kg 2.8
Lb 6.1

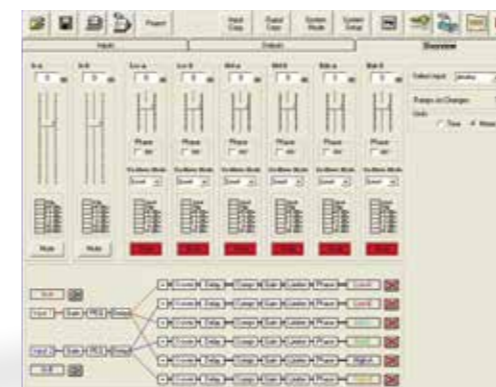
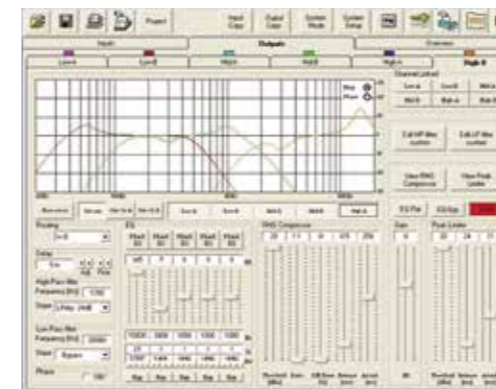
Transport Dimensions (WxHxD): mm 530x100x310
inch 20.8x3.9x12.2

Transport Weight: Kg 3.9
Lb 8.6

Voltage: 90 - 240Vac 50/60Hz

Power: 30VA

PC software screenshots



Ventis	Nylon cover	VN-C 115 40720 Ventis 115	VN-C 112 40721 Ventis 112	VN-C 110 40722 Ventis 110	VN-C 108A 41204 Ventis 108A	VN-C 108 41205 Ventis 108	VN-C 206 40723 Ventis 206	VN-C 115M 41207 Ventis 115M	VN-C 112M 41206 Ventis 112M
	Wall metal bracket to mount in horizontal position	VN-U 115 40724 Ventis 115	VN-U 112 40725 Ventis 112	VN-U 110 40726 Ventis 110	VN-U 108 41220 Ventis 108	VN-U 206 40727 Ventis 206	VN-U 115M 41296 Ventis 115M	VN-U 112M 41297 Ventis 112M	Directional wall mount bracket

X-PRO	Nylon cover	XP-C 215 41234 X-PRO 215	XP-C 15 39486 X-PRO 115	XP-C 12 39487 X-PRO 112	XP-C 10 39488 X-PRO 110	Wall metal bracket to mount in horizontal position	X-P U 15 38894 X-PRO 115A	X-P U 12 38893 X-PRO 112	X-P U 10 38892 X-PRO 110
--------------	--------------------	---------------------------------------	--------------------------------------	--------------------------------------	--------------------------------------	---	--	---------------------------------------	---------------------------------------

X-SUB	Nylon cover	XS-C 185 38895 X-SUB	XS-C 185 38896 X-SUB with wheels	XS-C 155 41233 X-SUB 155	XS-CH 155 41234 X-SUB 155 with wheels	Wheels Kit	KW-X SUB 38889 X-SUB
--------------	--------------------	-----------------------------------	---	---------------------------------------	--	-------------------	-----------------------------------

Vertus	Nylon cover	VT-C 604 36122 Vertus CLA 604	VT-C 114 37145 Vertus VT-SC 114	VT-C 59 37146 Vertus VT-SC 59	VT-C 208 36123 Vertus CLA 208	Pin Lock 4 pezzi	VT-P 604 Kit 36964 Vertus CLA 604	Stand adapter ø 35mm	VT-S 604/W 35723 Black 37044 White Vertus CLA 604A
---------------	--------------------	--	--	--	--	-------------------------	--	-----------------------------	--

Directional stand adapter	VT-DS 604/W 37053 Black 37054 White Vertus CLA 604A	Directional stand adapter	VT-W 604/W 35722 Black 37043 White Vertus CLA 604A	Stand column h 59cm	VT-SC59 604/W 36879 Black 36883 White Vertus CLA 604A	Stand column h 114cm	VT-SC114 604/W 37041 Black 37042 White Vertus CLA 604A
----------------------------------	---	----------------------------------	--	----------------------------	---	-----------------------------	--

Nylon cover	VT-C 1000 41024 Vertus CS 1000	Carrying bag	VT-CB 1000 40730 Vertus CS 1000	Trolley	TR-100 40912 Vertus CS 1000
--------------------	---	---------------------	--	----------------	--

Flying bar	VT-F 1000 40913 Vertus CS 1000	VT-F 1000W 41041 Vertus CS 1000 white	Joint bar	VT-J 1000 40731 Vertus CS 1000	VT-J 1000W 41040 Vertus CS 1000 white	Directional Wall mount	VT-W 1000 40728 Vertus CS 1000	VT-W 1000W 41039 Vertus CS 1000 white
-------------------	---	--	------------------	---	--	-------------------------------	---	--

SUBLine	Nylon cover	SL-C 218S 38897 Subline 218SA	SL-CH 218S 38898 Subline 218SA with wheels	SL-C 118 41225 Subline 118	SL-CH 118 41226 Subline 118 with wheels	SL-C 115 41227 Subline 215	SL-CH 115 41228 Subline 215 with wheels	SL-C 112 41229 Subline 112
	4 wheels kit 2 with brake 80 mm	KW-HM 80 30423 Subline 115SA	4 wheels kit 2 with brake 100 mm	KBW-1004S 25197 Subline 118S/SA Subline 218SA				

StageMaxX	Nylon cover	SM-C 12 36065 StageMaxX 12MA	Wall metal bracket to mount in horizontal position	SM-U 12W 36066 Black 36735 White StageMaxX 12MA	Metal bracket with top-hat speaker stand socket	SM-S 12 37099 StageMaxX 12MA
------------------	--------------------	---	---	---	--	---

HiMaxX	Nylon cover	V 33 15777 HiMaxX 60	V 29 10186 HiMaxX 40	V 56 29486 HiMaxX 100SA	HM-CH 100 37049 Subline 100SA with wheels
---------------	--------------------	-----------------------------------	-----------------------------------	--------------------------------------	--

Wall metal bracket to mount in horizontal position	BOX 104 15771 HiMaxX 60	BOX 100 10187 HiMaxX 40	Wall metal bracket to mount in vertical position	BOX 105 15772 HiMaxX 60	BOX 101 10188 HiMaxX 40	4 wheels kit 2 with brake 80 mm	KW-HM 80 30423 HiMaxX 100SA
---	--------------------------------------	--------------------------------------	---	--------------------------------------	--------------------------------------	--	--

ProMaxX	Nylon cover	V 64 33326 ProMaxX 114 ProMaxX 112	V 63 33325 ProMaxX 110	V 65 33327 ProMaxX 15 SA	PM-CH 15S 37050 ProMaxX 15 SA con ruote
----------------	--------------------	--	-------------------------------------	---------------------------------------	--

BOX 128 33329 ProMaxX 114 ProMaxX 112	BOX 127 33328 ProMaxX 110	4 wheels kit 2 with brake 80 mm	KW-HM 80 30423 ProMaxX 15 SA
---	--	--	---

Evo²MaxX	Nylon cover	V 33 15777 Evo ² MaxX 6	V 29 10186 Evo ² MaxX 4	V 30 13349 Evo ² MaxX 2			
	Wall metal bracket to mount in horizontal position	BOX 104 15771 Evo ² MaxX 6	BOX 100 10187 Evo ² MaxX 4	BOX 102 13351 Evo ² MaxX 2	Wall metal bracket to mount in vertical position	BOX 105 15772 Evo ² MaxX 6	BOX 101 10188 Evo ² MaxX 4
J	Nylon cover	V 38 18614 J 15 J 12 DJ 15	V 37 18613 J 8	V 36 18612 2x J 5			
	Directional wall mount bracket	SJ-8/WHT 18576 Black 39177 White J 8	SJ-5/WHT 18522 Black 38321 White J 5	Wall metal bracket to mount in horizontal position	BOX 112 18602 J 15 J 12	SJ-8U/WHT 18568 Black 38464 White J 8	SJ-5U/WHT 18523 Black 38465 White J 5
	Adjustable metal T stand for No. 2	SJ-8T 18569 Black J 8	SJ-5T 18527 Black J 5	Adapter 35mm	AJ-8 18570 Black J 8	AJ-5 18532 Black J 5	Metal frame for ceiling/wall installation
X-LITE	Nylon cover	XL-C 15 39489 X-LITE 15	XL-C 12 39490 X-LITE 12	XL-C 10 39491 X-LITE 11			
	Wall metal bracket to mount in horizontal position	XL-UH 15 38891 X-LITE 15	XL-UH 12 38890 X-LITE 12	XL-UH 10 38889 X-LITE 10	Wall metal bracket to mount in horizontal position	XL-UV 15 38904 X-LITE 15	XL-UV 12 38893 X-LITE 12
AMICO	Nylon cover	V 44 23373 Amico 10 USB					

ACCESSORIES AVAILABLE FOR ALL PRODUCTS	Wall mount heavy-duty steel speaker bracket	WMA 560BK 39332	Tripod speaker stand	MSA 300BK 39326	MSA 310BK 39327	MSA 325BK 39328	
	Microphone stand	MSA 400BK 39324	DTA 500BK 39325	MSA 100BK 39321	MSA 200BK 39322	MSA 180BK 39323	Telescopic speaker pole
							MSA 210BK 39329
							MSA 220BK 39330
							Speaker stand bag 39331

PROFESSIONAL CABLES

NC3FXX NC3MXX		Balanced Signal Cables	XMF-05 39728 Lenght 0.5mt	XMF-01 39729 Lenght 1mt	XMF-02 39730 Lenght 2mt	XMF-03 39731 Lenght 3mt	XMF-06 39732 Lenght 6mt
			XMF-10 39733 Lenght 10mt	XMF-15 39734 Lenght 15mt	XMF-20 39735 Lenght 20mt	XMF-30 39736 Lenght 30mt	
PowerCON TRUE1 NAC3MX NAC3FX			PMF-05 39409 Lenght 0.5mt	PMF-1 39408 Lenght 1mt	PMF-2 37893 Lenght 2mt		
			PMF-05 UL 39651 Lenght 0.5mt	PMF-1 UL 39652 Lenght 1mt	PMF-2 UL 39653 Lenght 2mt		
PowerCON NAC3FCA NAC3FCB			PAB-025 UL 39658 Lenght 0.25mt	PAB-05 UL 39657 Lenght 0.5mt	PAB-1 UL 36642 Lenght 1mt	PAB-2 UL 37303 Lenght 2mt	
			PAB-025 36645 Lenght 0.25mt	PAB-05 36644 Lenght 0.5mt	PAB-1 36643 Lenght 1mt	PAB-2 37892 Lenght 2mt	
PowerCON NAC3FCA NAC3FCB (UL series)			SP4-025 39754 Lenght 0.25mt	SP4-05 39755 Lenght 0.5mt	SP4-2 39756 Lenght 2mt	SP4-10 39757 Lenght 10mt	SP4-20 39758 Lenght 20mt
							Lockable 4 pole speakON adapter 39772

FBT Elettronica SpA
has the right to amend products
and specifications without notice.

ALPS™, B&C and Neutrik™ are the trademarks
of their respective owners.

Graphics
Studio Conti

Photography
Giuseppe Saluzzi

Printing
Tecnostampa - Pigni Group Printing Division
Loreto - Trevi

Date of printing: November 2018

FBT.P.S.18/19.0.UK

A technological know-how that extends from research to planning, from electronics to design, from wood to metal, from plastics to painting. A highly innovative product and a manufacturing process determined by a strict final electronic testing.

FBT Elettronica SpA
62019 Recanati (MC) - Italy
Tel: +39 071 750591
Fax: +39 071 7505920
info@fbt.it - www.fbt.it
(International Headquarter - Factory)

FBT Audio (UK) Ltd
Rochester, Kent, UK
Tel: 0203 598 5162
Fax: 0203 598 5163
info@fbtaudio.co.uk
www.fbtaudio.co.uk

Distributed by

English