

NEW PRODUCTS 2018

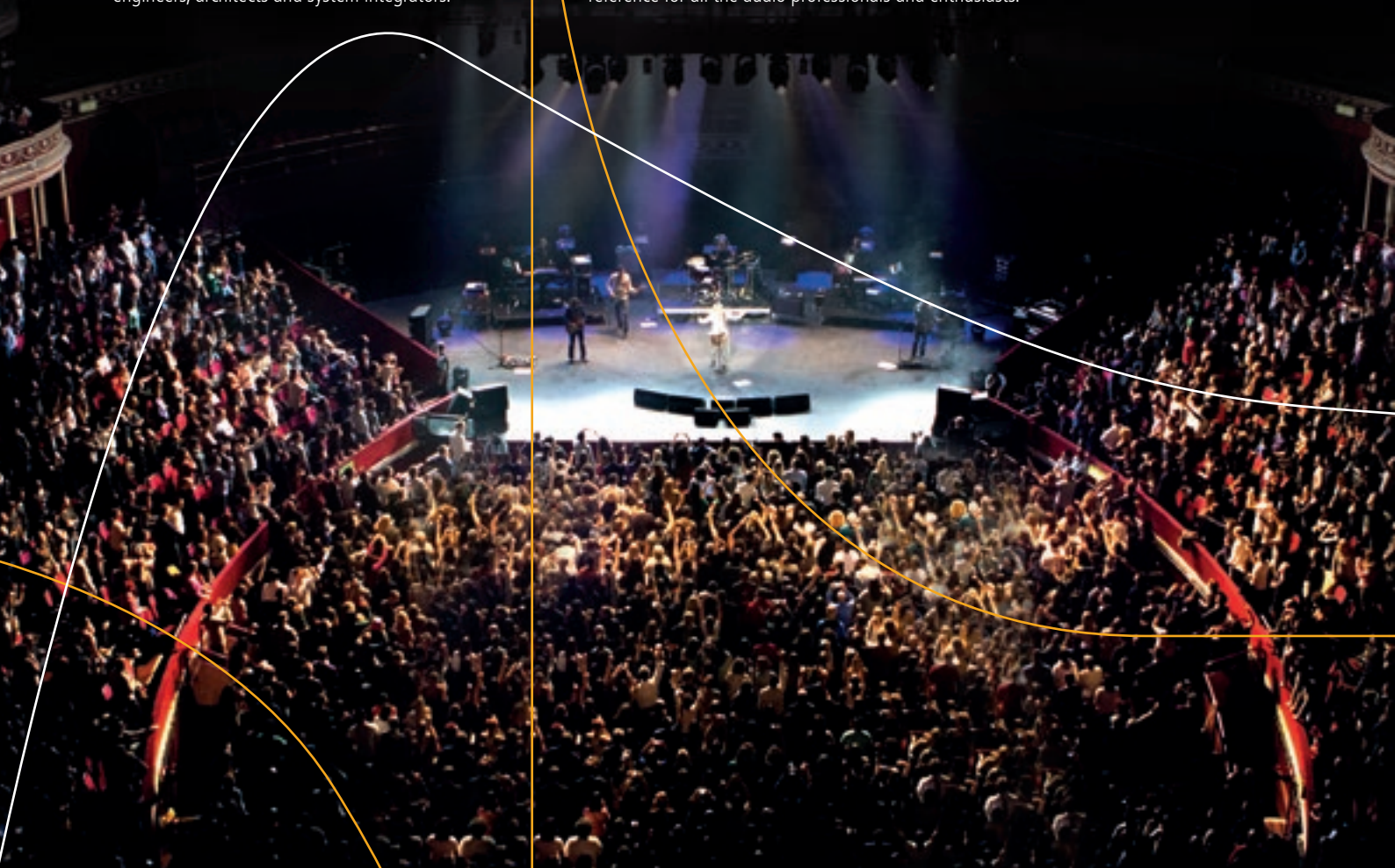
RCF Sound Culture

AT RCF WE CARE ABOUT YOUR SOUND.

Since 1949 RCF has been committed to the perfect reproduction and amplification of sound in the fields of professional audio for events, music, broadcast and public address. We bring typical Italian passion for perfection and good design in the audio universe. RCF researches and develops every product from scratch, to ensure the maximum quality and reliability to the final user. The complete range of products covers all the aspects of the audio chain and all the requirements of musicians, sound engineers, architects and system integrators.

RCF markets its products through sales offices in the United Kingdom, Germany, France, Spain, the United States, and a network of trusted professional distributors in the rest of the world.

RCF has always shared the knowledge, experience, and skills of its engineers in training activities, seminars, and demos for all audio professionals. At the same time, the internal support engineering team assists customers with the design of complex systems. The solid know-how, crafted from nearly 70 years of history, along with continuous technological innovation, makes RCF a fundamental reference for all the audio professionals and enthusiasts.



/ PRO SOUND

The concept of this unique speakers derives from the touring industry, bringing in a versatile format all the experience of RCF professional sound. The vocals are natural, the sound is clear at longer distances, the SPL power is stable at very high levels. Perfect for live sound reinforcement and reliable in installed applications.

/ DSP

The new generation DSP handles all the processing within the cabinet and allows control of soft clipping limiters, RMS limits, amplitude and phase equalization. From the encoder on the input panel it is possible to adjust gain, low pass and high pass crossovers, delay, phase and cardioid equalization. Using the integrated RDNet remote control it's also possible to monitor and to access to all the setting.

New perspective on linearity



FIRPHASE

RCF speakers are designed using a proprietary and advanced FIR filtering technology, conceived to deliver transparent sound, absolute clarity and perfect stereo images to the listener. The special FIRPHASE filters allow to achieve coherent distribution of sound for all listeners without phase distortions, ensuring minimum latencies to the system.

PHASE MATTERS

The design of the FIR filter for this specific purpose should start from an accurate measurement of the loudspeaker phase. FIRPHASE algorithm use this measurement and adapt the loudspeaker's phase without touching the amplitude equalization. The heart of the advanced technique used by FIRPHASE is a recursive method (least squares method) combined with a proprietary algorithm that calculates the best FIR filter coefficients set in according to amplitude and phase constrains. The algorithm corrects phase and amplitude (if necessary) by taking into account the weak points of the transducers and the resonances or cancellations due to the cabinet of the loudspeaker. This technique allows a deep control of phase at mid-low frequency with relatively small filters, reaching a higher resolution than that one as theory suggests.



/ TRANSDUCER INNOVATORS

RCF design all the transducers to deliver a definite and clear sound, where the loudspeaker is able to reproduce a sound most as possible close to the original, combining the absence of distortion and the ability to withstand high power levels over a long period of time. RCF develops advanced transducer technology including the application of high-tech materials.

/ RENTAL PROOF HARDWARE

The cabinets are made by the highest quality materials. From wood, plastics and metal parts to the final texture, RCF offers the maximum reliability and strength for the intensive use on the road in every product. The integrated mechanics allow the system engineer to create any arrangement easily and safely.



Monitoring And Management Network

RDNet is a proprietary protocol for RCF products that provides straightforward and intuitive monitoring and control of the audio system down to every device/object. Each device has its own DSP, so it is possible to address specific presets or modifications of parameters to single or groups of objects. A network user can change level, delay, EQ (including FIR) and other parameters, including advanced subwoofer configurations. Not only loudspeakers: it is possible to control routing and parameters of multiple RCF devices, such as digital matrixes or amplifiers. RDNet checks all the connected devices, recognises, and adds them as objects on the main window, thanks to the auto-scan function. The real-time monitoring features a multitude of parameters such as fan speed, temperature, inclination of the single speaker, VU Meters and peak levels. The RDNet protocol runs on the ultra-stable RS-485 communication.



- Auto Scan
- Array and Zones Grouping
- Recall and Save System Presets
- Adjust gain and delay on individual components
- Complete Real Time Monitoring
- Real Time multiple-type EQ and FIRPHASE EQ
- Easy Cardioid, Endfire and Arc Array Subwoofer configuration
- Automatic Cluster Size shaping and Air Compensation

/ DOWNLOAD THE SOFTWARE



The RDNet software is freely available for registered users on RCF's website Download Section

/ AUTO SCAN

When online the RDNet Control 8 unit sequentially scans all audio devices, automatically labelling them with digital addresses. The loudspeaker objects are immediately added to the software synoptic as an object for each speaker (or any other audio device) found on the network.



MONITOR AND MANAGE

RDNNet checks all the connected devices, recognises and adds them as objects on the main window, thanks to the auto scan function. The real-time monitoring features a multitude of parameters like the fan speed, the temperature, the inclination of the single loudspeaker, VU Meters and peak levels.



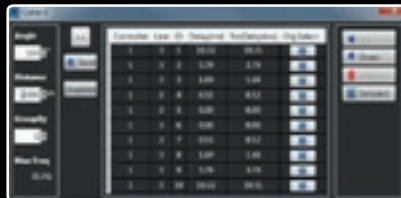
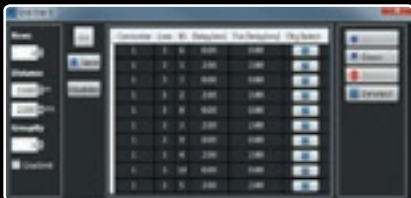
ADVANCED EQUALIZER

Every Zone has three different fixed FIR equalisers with gain control. Every Array Group has a global control of the FirPhase Gain for parallel increment/decrement of the Zone FIRs.



GET THE MOST OF YOUR SYSTEM

An incremental control to shape the Air Absorption Compensation, very useful in case of humidity or temperature changes (e.g. soundcheck on a sunny day, concert by night). The low-mid shaping of the line array is an automatic calculation based on the Cluster Size to always obtain the perfect linear frequency response from the whole system.



EASY SUBWOOFER CONFIGURATION

The new subwoofer configurations help the engineer to set up subwoofer Cardioids, Arcs or EndFire configurations in one go.

/ COMPLETE INDIVIDUAL SPEAKER CONTROL

The sound engineer has complete control of every single speaker, individually or grouped. Each device, with its own built-in communication board and DSP, is an active part of the brain of the system, able to store presets, receive commands and continuously send status information.

/ UNIQUE FEATURES

RDNNet has several new functions as well as multiple improvements. The protocol is now faster than ever, the new subwoofer configurations help the engineer to set up subwoofer cardioid, arcs or endfire configurations in one go. The real time EQ and the FIRPHASE filters are now easy to control on the same window. An Air Compensation function automatically adjust the array response on temperature/humidity changes on the environment.

30

HDL 30-A

ACTIVE TWO-WAY LINE ARRAY MODULE

The RCF HDL 30-A is a compact bi-amped 2-way active touring system for medium to large events, both indoors and outdoors. It features two 10-inch woofers and an impressive 4-inch titanium compression driver. The time coherent waveguide is the result of in-depth research and design. HDL 30-A is the first line array in a composite cabinet with zero-degree phase and ultra-linear amplitude response. The built-in 2200 watt class-D amplifier delivers excellent playback clarity and up to 137 decibels SPL max. The RCF HDL 30-A features state of the art RCF transducers with neodymium magnets. Considering its acoustical power, it has a remarkably low weight for easy handling and flying.

- 137 dB SPL Max
- 2000 W 2-way class-D switching amplifier
- 50 - 20000 Hz Frequency Range
- 100° x 15° wide, constant directivity coverage angle
- 4" neodymium Compression Drivers
- 2 x 10" high power neodymium Woofer
- 680 Hz Crossover Frequency
- Wooden reinforced polypropylene composite cabinet
- **FIRPHASE**
- RDNet remote monitoring and control
- 293x705x502 mm - 11,5x27,7x19,7 in (HxWxD)
- 25 kg / 55.1 lbs



**RDNET
ON BOARD**



p.n. 130.00.511 (90-240V)

/ TRANSDUCERS

State of the art RCF transducers with neodymium magnets. Two 10" woofers and an impressive 4" titanium compression driver on a symmetrical design, for constant horizontal coverage. The time coherent waveguide is the result of 3 years of research and design.

/ DSP

The special FIRPHASE filters allow coherent distribution of sound to be achieved for all listeners without phase distortion. Air Compensation for individual cabinet or groups helps to compensate the common frequency loss in air on long throw applications.

38

HDL 38-AS

ACTIVE FLYABLE SUBWOOFER MODULE

The HDL 38-AS is the ideal flyable bass complement for the HDL 30-A array system. It features one 4.0" voice coil, 18" Neodymium woofer to handle 136 dB SPL Max from 30 Hz to 140 Hz with the maximum linearity and low distortion. The HDL 38-AS is perfect to create flown systems for theatrical and indoor requirements. The built-in 3200W class-D amplifier delivers excellent playback clarity and up to 136 decibels SPL max. Due to its RNet compatibility, the HDL 38-AS is part of the professional HDL System.

/ POWERFUL CLASS D AMPLIFIERS

RCF's Class-D power amplifier technology packs huge performance operating with high efficiency into a lightweight solution. HDL amplifiers deliver a ultra-fast attack, realistic transient response, and impressive audio performance. The amplifier features a solid machined aluminium structure which not only stabilises the amplifier during transportation but also helps the fan-less heat dissipation. All the HDL amplifiers present SMPS power supply section to produce maximum output and minimum weight. The HDL 38-AS incorporates the RNet Networked Management.



/ 18" PRECISION TRANSDUCER

Our latest developments have resulted in designing state of the art neodymium magnetic circuits, radically new voice coil ventilation systems and ground breaking direct drive voice coil assemblies.



p.n. 130.00.580 (90-240V)



**RNET
ON BOARD**

- 136 dB SPL Max
- 3200W class-D Amplifier
- 30 - 140 Hz Frequency Range
- 18" Neodymium Woofer, 4.0" voice coil
- RNet Networked Management
- 502x700x621mm
19.76x27.56x24.45 in (HxWxD)
- 53 kg / 116.85 lbs

HDL 28-A

ACTIVE TWO-WAY LINE ARRAY MODULE

The RCF HDL28-A is a compact bi-amped 2-way active touring system for a wide range of applications, both indoors and outdoors, with an emphasis on vocal intelligibility. It features two 8-inch woofers and an impressive 3-inch titanium compression driver. The time coherent waveguide is the result of in-depth research and design. Following the HDL 30-A philosophy, the HDL 28-A shares the composite material cabinet, the zero-degree phase and ultra-linear amplitude response. The built-in 2200 watt class-D amplifier delivers excellent playback clarity and up to 135 decibels SPL max. The RCF HDL28-A features state of the art RCF transducers with lightweight neodymium magnets. Considering its acoustical power, it has a remarkably low weight for easy handling and flying.

The RCF HDL28-A features state of the art RCF transducers with neodymium magnets. RCF's experienced engineering teams have specially developed and matched each component — starting from the power supply through the input board to the amplifiers and transducers right up to the complete HDL-28A System.

/ 4 PATH WAVEGUIDE

The custom 4 PATH designed waveguide allows a precise coverage of 100 x 15 degrees, while also delivering an excellent, linear high-frequency response. The unique shape of the four ducts forming the guide creates an ideal isophasic load from 750 Hz to the highest audible frequencies.



/ HIGH FREQUENCIES

- High-performance RCF ND840
- 3.0-inch diaphragm titanium compression driver
 - 1.5-inch exit throat
 - 750 Hz Crossover Point

/ LOW FREQUENCIES

- 2 X 2.5" voice coil neodymium 8" woofers
- Linear low frequencies handling down to 65 Hz
- Water resistant fibre doped cone
- Polycotton M-roll surround
- Hyperventated magnetic structure



RDNET ON BOARD

- 135 dB Max SPL
- 2200W Two Way Amplifier
- 48 kHz, 32 bit DSP processing
- 1.5" Titanium Compression Driver, 3.0" voice coil
- 2 x 8" Neodymium Woofers, 2.5" voice coil
- **FiRPHASE**
- 750 Hz Crossover Point
- 237x470x377 mm - 9.33x18.5x14.84 in (HxWxD)
- 18 kg / 39.68 lbs



p.n. 130.00.579 (90-240V)

36

HDL 36-AS

ACTIVE FLYABLE SUBWOOFER MODULE

Theatrical and indoor requirements often need a free front of the stage, without space for subwoofers. The HDL 36-AS is the ideal flyable bass complement for the HDL 28-A array system. It features one 4.0" voice coil, 15" Neodymium woofer to handle 135 dB SPL Max from 40 Hz to 140 Hz with the maximum linearity and low distortion. The built-in 3200 watt class-D amplifier delivers excellent playback clarity and up to 135 decibels SPL max. Due to its RNet compatibility, the HDL 36-AS is part of the professional HDL System.

/ LEGENDARY WOOFERS

RCF subwoofers are the first choice of many sound engineers, thanks to the very high SPL levels at very low frequencies, smaller dimensions compared to the competitors, self-powered design, RNet remote control, cardioid configuration options and impressive size/weight to SPL output ratio. Your crowd will be able to live an engaging immersive experience.

/ POWERFUL CLASS D AMPLIFIERS

RCF's Class-D power amplifier technology packs huge performance operating with high efficiency into a lightweight solution. HDL amplifiers deliver a ultra-fast attack, realistic transient response, and impressive audio performance. The amplifier features a solid machined aluminium structure which not only stabilises the amplifier during transportation but also helps the fan-less heat dissipation. All the HDL amplifiers present SMPS power supply section to produce maximum output and minimum weight.



The hardware is designed for an easy and fast setup, completely compatible with the HDL 28-A rigging. The heavy-duty front grille is powder coated. A special transparent-to-sound foam backing inside helps to further protect the transducers from dust. For weatherproof capabilities, a rain cover is available.



p.n. 130.00.583 (90-240V)



**RNET
ON BOARD**

- 135 dB Max SPL
- 3200W Amplifier
- 40-140 Hz frequency response
- 15" Neodymium Woofer, 4.0" voice coil
- RNet Networked Management
- 458x569x592 - 18x22.4x23.31 (mm/inches)
- 39 kg / 86 lbs

HDL 26-A

ACTIVE TWO-WAY LINE ARRAY MODULE

The RCF HDL 26-A is an ultra-compact bi-amped 2-way active touring system from small to medium-sized events, both indoors and outdoors. It features two 6-inch woofers in hybrid band-pass configuration and an impressive 3-inch titanium compression driver. The time coherent waveguide is the result of in-depth research and design. The built-in 2000W class-D amplifier delivers excellent playback clarity and up to 133 decibels SPL max. The RCF HDL 26-A features state of the art RCF transducers with neodymium magnets. Considering its acoustical power, it has a remarkably low weight for easy handling and flying.

The RCF HDL 26-A features state of the art RCF transducers with neodymium magnets. RCF's experienced engineering teams have specially developed and matched each component — starting from the power supply through the input board to the amplifiers and transducers right up to the complete HDL 26-A System.

/ SYMMETRICAL DESIGN

The symmetrical design of the cabinet produces identical left and right coverage of 100°x10°. The component positioning and special DSP crossover filtering of the HDL 26-A take care of the constant directivity without spots of break up or attenuation.

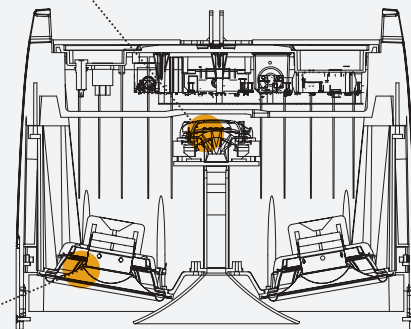
The front baffle provides:

- Coplanar woofers
- Controlled LF dispersion
- Central space to host the HF waveguide

INSIDE VIEW

/ HIGH FREQUENCIES

- 3.0-inch diaphragm titanium compression driver
- 1.5-inch exit throat
- 750 Hz Crossover Point



/ LOW FREQUENCIES 6.0" WOOFERS

- 2 X 2.0" voice coil neodymium 6" woofers
- Low frequencies handling down to 65 Hz
- Water resistant fibre doped cone
- Polycotton M-roll surround



**RDNET
ON BOARD**



p.n. 130.00.588 (90-240V)

- 133 dB Max SPL
- 2000W Two-Way Amplifier
- 1.5" Titanium Compression Driver, 3.0" voice coil
- 2 x 6" Neodymium Woofers, 2.0" voice coil
- **FiRPHASE**
- 750 Hz Crossover Point
- 237x470x377
9.33x18.5x14.84 in (HxWxD)
- 11.5 kg / 25.35 lbs

35

HDL 35-AS

ACTIVE FLYABLE SUBWOOFER MODULE

While the HDL 26-A is designed for the best speech intelligibility and background music, a correct musical response requires low distortion and high power on low frequencies. The HDL 35-AS is the ideal flyable bass complement for the HDL 26-A array system. It features a baltic birch plywood cabinet housing one 4.0" voice coil, 15" Neodymium woofer to handle frequencies from 40 Hz to 140 Hz with the maximum linearity and lowest distortion.

The hardware is designed for an easy and fast setup, completely compatible with the HDL 26-A rigging. The heavy-duty front grille is powder coated. A special transparent-to-sound foam backing inside helps to further protect the transducers from dust. For weatherproof capabilities, a rain cover is available.



/ POWERFUL CLASS D AMPLIFIER

RCF's Class-D power amplifier technology packs huge performance operating with high efficiency into a lightweight solution. HDL amplifiers deliver a ultra-fast attack, realistic transient response, and impressive audio performance. The amplifier features a solid machined aluminium structure which not only stabilises the amplifier during transportation but also helps the fan-less heat dissipation. All the HDL amplifiers present SMPS power supply section to produce maximum output and minimum weight. The built-in 2200 watt class-D amplifier delivers excellent playback clarity and up to 134 decibels SPL max. Due to its RNet compatibility, the HDL 35-AS is part of the professional HDL System.

/ PRECISION TRANSDUCERS

Our latest developments have resulted in designing state of the art neodymium magnetic circuits, radically new voice coil ventilation systems and ground breaking direct drive voice coil assemblies.



**RNET
ON BOARD**

- 134 dB Max SPL
- 2200W Amplifier
- 40-140 Hz frequency response
- 1x15" Neodymium Woofer, 4.0" voice coil
- RNet Networked Management
- 458x470x508 mm - 18x18.5x20 in (HxWxD)
- 28.8 kg / 63.5 lbs

p.n. 130.00.575 (90-240V)

2-WAY MULTIPURPOSE

NX 45-A

ACTIVE TWO-WAY MULTIPURPOSE SPEAKER

Featuring RCF precision transducers and a wooden cabinet, the NX 45-A is the RCF's most flexible tool for deploying high-power and pristine sound as a stand-alone FOH system or as a satellite (with subwoofer) but either as a stage monitor, DJ monitor or front, side-fill or flown speaker. Conceived as the ideal complement to the RCF high powered HDL System or NXL arrays, it features much of the power and accessories of the TT+ series, such as multiple rigging points and the FIRPHASE processing.



/ POWERFUL WOOFER

The low-frequency transducer is a high-power 15" woofer with a 3.0" voice coil, delivering a punchy bass. Reproduction of the mid-bass frequencies is accurate, transparent and free from distortion.



/ 4.0" SUPERIOR COMPRESSION DRIVERS

The ND940 large format Compression Driver with 4" voice coil is the key feature of the NX 45-A. The extremely low crossover point of 650Hz is a must for perfect reproduction of the vocal range.

/ DIRECT DRIVE TECHNOLOGY

The voice coil features a high-temperature kapton former. The assembly process takes advantage of the RCF proprietary Direct Drive technology. The diaphragm's suspension has been designed following extensive studies aimed at minimising distortion and extending low frequency range.

/ AMPLIFIER AND DSP

The two-way 1400 W amplifier features a solid machined aluminium structure, which not only stabilises the amplifier during transportation but also assists in heat dissipation. The internal DSP has limiters and protections for the transducers and includes the special FIRPHASE filters to achieve a coherent distribution of sound for all listeners without phase distortion. A single button shapes the sound for background music purposes, when the system plays at minimum volume levels.



- 1400 W 2-way class-D amplifier
- 133 dB SPL Max
- 45 - 20000 Hz Frequency Range
- 90° x 50° constant directivity coverage
- 15" neodymium woofer, 3.5" voice coil
- Horn loaded 1.4" neodymium c. driver, 4.0" v.c.
- **FIRPHASE**
- Easy to install with built-in multiple rigging points
- 707x418x402 mm - 27,83x16,46x15,83 in (HxWxD)
- 23,4 kg / 51.6 lbs

p.n. 130.00.552 (220-240V) - 130.00.553 (115V)

“ professional power ”

NX 32-A

ACTIVE TWO-WAY MULTIPURPOSE SPEAKER

Featuring RCF precision transducers and a wooden cabinet, the NX 32-A is the RCF's most flexible tool for deploying high-power and pristine sound as a stand-alone FOH system or as a satellite (with subwoofer) but either as a stage monitor, DJ monitor or front, side-fill or flown speaker. Conceived as the ideal complement to the RCF high powered HDL System or NXL arrays, it features much of the power and accessories of the TT+ series, such as multiple rigging points and the FIRPHASE processing.

/ 3.0" COMPRESSION DRIVERS

The ND840 Compression Driver in pure Titanium with a 3.0" voice coil allows a crossover point at only 800 Hz. This allows a better impulse response, fast decay and superior efficiency. Lightweight and powerful, our neodymium drivers are a reference in performance and reliability.

/ DIRECT DRIVE TECHNOLOGY

The voice coil features a high-temperature kapton former. The assembly process takes advantage of the RCF proprietary Direct Drive technology. The diaphragm's suspension has been designed following extensive studies aimed at minimising distortion and extending low frequency range.



- 1400 W 2-way class-D amplifier
- 131 dB SPL Max
- 50 - 20000 Hz Frequency Range
- 90° x 60° constant directivity coverage
- 12" woofer, 2.5" voice coil
- Horn loaded 1.4" neodymium c. driver, 3.0" v.c.
- **FIRPHASE**
- Easy to install with built-in multiple rigging points
- 600x365x378 mm - 23,62x14,37x14,88 in (HxWxD)
- 19,4 kg / 42.8 lbs



p.n. 130.00.550 (220-240V) - 130.00.551 (115V)

45

HDP 45-A

HDP 45-A

ACTIVE TWO-WAY SPEAKER

The new HDP 45-A speaker boosts the performance with a top-quality amplifier, a series of RCF precision transducers, the revolutionary FIRPHASE processing and a brand new professional rugged cabinet. The vocals are natural, the sound is clear at long distances, the SPL power is stable at very high levels with low distortion. The concept of the D-Line derives from the touring industry, bringing in an elegant and compact cabinet all the experience of RCF professional sound with the maximum reliability and strength for the intensive use on the road. Perfect as a main front of house in small PA systems, high powered floor monitoring and unobtrusive infill applications, especially when connected to the RDNet Networked Management.

/ STATE-OF-THE-ART POWER

Two independent digital amplifiers – 1600 W for the low frequencies, 600 W for the high frequency driver – deliver an astonishing output power making the HDP 45-A the most powerful speaker in composite material in its category. The input section provides In/Out XLR connectors, central encoder to control system parameters, RDNet Input and Output. This class-D amplifiers derives directly from the TT+ Series, offering hi-fi sound, extremely low distortion with negligible quiescent noise and stable burst response.



p.n. 130.00.593 (90-240V)



/ THE REAR PANEL

The rear panel features a simple rotary encoder that allows full control of all the speaker's functions. A simple command on the panel allows to disable the input panel and remotely control the speaker.

/ RENTAL PROOF

D-LINE cabinets are moulded on a special polypropylene composite material designed to dampen down vibrations even at maximum volume settings. From moulding to the final texture, D-LINE offers the maximum reliability and strength for the intensive use on the road. The reflex port has been resized to offer a better efficiency. The HD 35-A is equipped with a top handle and two side handles with rubber handgrip for greater portability. The new cabinet shape will allow every D-LINE model to be used in the standard configuration as well as in stage monitor model. Two M10 and 3 M6 threaded inserts are provided for optional mounting hardware in Installed Sound Applications.



**RDNET
ON BOARD**

- 133 dB Max SPL
- 2200 WATT 2-way power
- 1.5" Titanium Compression Driver, 4.0" v.c. Neodimium
- 15" Neodimium Woofer
- 750 Hz crossover point for perfect vocal reproduction
- 90°x60°, wide dispersion constant directivity horn
- **FIRPHASE**
- Ultra-Light weight
- 705x442x386 mm - 27.76x17.40x15.20 in (HxWxD)
- 20 kg / 44.09 lbs

HD TWO-WAY SPEAKERS

HD 35-A | HD 15-A

ACTIVE TWO-WAY SPEAKERS

The new D-Line speakers boosts the performance with a series of brand new transducers, improves the sound quality with the revolutionary FIRPHASE processing and renew the cabinet design to exalt the professional look. The vocals are natural, the sound is clear at long distances, the SPL power is stable at very high levels. The concept of the D-Line derives from the touring industry, bringing in an elegant and compact cabinet all the experience of RCF professional sound with the maximum reliability and strength for the intensive use on the road. Connect your microphone, your device or your mixer to the speaker and turn up the volume: real plug'n'go. Perfect as a main front of house in small PA systems, high powered floor monitoring and unobtrusive fixed installation.

/ IN-OUT CONNECTORS

The amplifier presents both XLR In/ Out connectors and a Jack input for the maximum connection versatility.



/ SUPERIOR COMPRESSION DRIVERS

The ND840 Compression Driver on board the HD 35-A in pure Titanium with a 3" voice coil allows a crossover point at only 800 Hz. This allows a better impulse response, fast decay and superior efficiency. Lightweight and powerful, RCF neodymium drivers are a reference in performance and reliability.

/ POWERFUL CLASS D AMPLIFIERS

RCF's Class-D power amplifier technology packs huge performance operating with high efficiency into a lightweight solution. D-Line amplifiers deliver ultra-fast attack, realistic transient response and impressive audio performance. The amplifier features a solid mechanical aluminium structure which not only stabilises the amplifier during transportation but also helps the fan-less heat dissipation. All the D-LINE amplifiers present SMPS power supply section in order to produce maximum output and minimum transportation weight.



HD 35-A

p.n. 130.00.592 (115V)
p.n. 130.00.591 (230V)

- 132 dB Max SPL
- 1400 watt
- 1.4" C. Driver, 3.0" v.c.
- 15" Woofer, 3.0" v.c.
- Jack - XRL IN/OUT
- Rugged front full grill
- **FIRPHASE**
- 705x442x386 mm
27,76x17,40x15,20 inch (HxWxD)
- 21.4 kg / 47.18 lbs



HD 15-A

p.n. 130.00.590 (115V)
p.n. 130.00.589 (230V)

- 130 dB Max SPL
- 1400 watt
- 1.0" C.Driver, 1.75" v.c.
- 15" Woofer, 2.5" v.c.
- Jack - XRL IN/OUT
- Extended bass
- **FIRPHASE**
- 708x437x389 mm
27.87x17.2x15.31 inch (HxWxD)
- 19.6 kg / 43.21 lbs

EVOX J SYSTEM

EVOX J8

ACTIVE TWO-WAY PORTABLE ARRAY

The incredibly powerful J series alters the landscape of portable PA once again. The system features a line source satellite module with eight 2" full-range drivers paired with a high-powered 12" woofer in a bass reflex enclosure. All powered by on-board 1400-watt Class-D amplification. The EVOX J Series maintains a similar footprint to the original EVOX systems, now in a portable composite enclosure. The system offers stunning sound performance with crystal clear vocal reproduction and unparalleled musical response. This makes the RCF EVOX the smart choice for live entertainment, DJs, parties, club music and corporate events.

- 128 dB SPL Max
- 1400 Watt
- 40 – 20000 Hz Frequency Range
- 120° x 30° slightly tilted pattern control
- **FiRPHASE**
- 12" Woofer, 2.5" v.c.
- DSP Processing
- 2350x350x450 mm 92.5x13.77x17.71 in (HxWxD)
- 23,8 kg / 52.5 lbs

Perfect vocal reproduction
Thundering bass RCF unique sound
Portable solution with easy set-up

/ ADJUSTABLE POLE MOUNT

/ 8 X 2" ULTRA COMPACT
FULLRANGE, 1" V.C.

EVOX J8 (Black) p.n. 130.00.554 (220-240V) - p.n. 130.00.555 (115V)
EVOX J8 W (White) p.n. 130.00.567 (220-240V) - p.n. 130.00.568 (115V)

EVOX J MIX8

ACTIVE TWO-WAY ARRAY MUSIC SYSTEM

Taking the EVOX J Series one step further, RCF has added an 8-input Digital Mixer to the system. The onboard processing power of the innovative Z.CORE DSP provides not only full mix functions; it includes high-quality instrument FX and AMP simulations. An EVOX iOS/Android-compatible app allows to manage the J MIX8. Adding Bluetooth audio and Hi-Z instrument input, the EVOX J MIX8 combines the quality and reliability of RCF transducers and amplification with a powerful remote controllable 8-channel digital mixer. The all-in-one solution, superior sound quality and easy set-up and transportation make the EVOX the perfect workmate for musicians.

- All the features of J8 plus:
- 8-Channel Digital Mixer with multiple FX
- Bluetooth Audio
- Hi-Z Input for Musical Instruments
- Remote Control via RCF Evox App (Bluetooth)
- Auxiliary Output
- 2350x350x450 mm 92.5x13.77x17.71 in (HxWxD)
- 24,4 kg / 53.8 lbs

Fully featured 8-channel digital mixer
Superior FX & AMP simulator
RCF EVOX App



Z.CORE DSP FX Innovative processing

EVOX J MIX8 (Black) p.n. 130.00.556 (220-240V) - p.n. 130.00.557 (115V)
EVOX J MIX8 W (White) p.n. 130.00.569 (220-240V) - p.n. 130.00.570 (115V)



ART 7 ^{MK 4}

ART 725 MK4

PASSIVE TWO-WAY SPEAKER

The ART Series is the beating heart of RCF. These multiple purpose active speaker represent the finest examples of audio design in a rugged composite cabinet, now in black. The Mk4 Series is equipped with a new generation high-powered woofers and the latest compression driver technology, plus a redesigned front grille, all in a black cabinet.

The ART concept offers the best audio choice for a multitude of live sound applications.

/ COMPONENT SAFETY

LICC (Low Impedance Compensated Crossover) with aluminium housed resistors and integrated heat sink

/ 3.0" SUPERIOR COMPRESSION DRIVERS

The ART 735 is a unique speaker in its category. The titanium dome, 3.0" voice coil neodymium compression driver offers a unique vocal clarity and sound projection.



/ POWERFUL WOOFER

The 15" neodymium woofer offers an extremely linear response and a precise, deep low frequency control. The transducers are produced using the most advanced assembly technologies.



p.n. 130.00.548



- 133 dB Max SPL
- 650 W AES power handling
- 1.4" Titanium C. Driver, 3.0" v.c. Neodymium
- 15" Woofer
- 800 Hz crossover point for perfect vocal reproduction
- 90°x60°, wide dispersion constant directivity horn
- 708x437x389mm - 27.87x17.2x15.31 in (HxWxD)
- 19 kg / 41.8 lbs

3

ART 3 MK4

ART 315 MK4 | ART 312 MK4 | ART 310 MK4

PASSIVE TWO-WAY SPEAKERS

The ART Series is the beating heart of RCF. These multiple purpose active speaker represent the finest examples of audio design in a rugged composite cabinet, now in black. The Mk4 Series is equipped with a new generation high-powered woofers and the latest compression driver technology, plus a redesigned front grille, all in a black cabinet.

The ART concept offers the best audio choice for a multitude of live sound applications.

YOUR STAGE PARTNER

ART 3 speakers are ideal for the musician or sound provider. Cabinets are moulded on a special polypropylene composite material designed to dampen down vibrations even at maximum volume settings. From moulding to the final texture, ART3 offers maximum reliability and strength for intensive use. The ART 315 and ART 312 are equipped with a top handle and two side handles for greater portability.

/ SUPERIOR TRANSDUCERS

The woofer delivers a deep and accurate reproduction of the mid-bass frequency range while the 1.0" compression driver offers a very open and natural midrange sound and extreme precision in high frequency reproduction.

BRING ART WITH YOU

The sturdy, ergonomic cabinet is easy to carry, thanks to either the handle at the top or the practical handles on both sides. The base of each speaker includes a steel pole socket for mounting on a stand or on a subwoofer pole. Stability and safety are assured. Thanks to the rear profile of the cabinet, the ART 3 Series speakers can easily be used as stage monitors whatever the needs of musicians. Internal reinforcement prevents any deformation of the cabinet.



ART 315 MK4

p.n. 130.00.587



ART 312 MK4

p.n. 130.00.586



ART 310 MK4

p.n. 130.00.585

- 129 dB max spl
- 350 W AES
- 1.0" C.Driver, 1.5" v.c.
- 15" Woofer, 2.5"v.c.
- Jack - XRL IN/OUT
- 90°x60°
- 680x405x345 mm
26.67x15.94x13.58 in
(HxWxD)
- 16.5 kg / 36.38 lbs

- 128 dB Max SPL
- 350 W AES
- 1.0" C. Driver, 1.5" v.c.
- 12" Woofer, 2.5"v.c.
- Jack - XRL IN/OUT
- 90°x60°
- 680 x405 x345 mm
26.77x15.94x13.58 in
(HxWxD)
- 15.5 kg / 34.17 lbs

- 127 dB Max SPL
- 300 W AES
- 1.0" C.Driver, 1.5" v.c.
- 10" Woofer, 2.0" v.c
- Jack - XRL IN/OUT
- 90°x60°
- 537x337x315 mm
21.14x13.26x12.4 in
(HxWxD)
- 12.40 kg / 27.34 lbs



TTL 4-A



ACTIVE TWO-WAY LINE ARRAY MODULE

The TTL 4-A module delivers studio quality sound for highly demanding events indoors or outdoors for small to medium sized areas. Its design provides the audio engineer with the best tonal balance and intelligibility while maintaining an unobtrusive and adaptable form. Offering all the advantages of line array technology, such as high directivity, increased range and a uniform level distribution, it is the preferred sound set-up for high quality suspended systems.

/ HEAVILY BRACED INTERNAL STRUCTURE

The internal structure is heavily braced to survive long term use and transportation and all the parts are assembled on metal inserts with metric screws. The amplifier is housed in a separate chamber from the transducers to offer the best efficiency and reliability.

/ MAXIMUM EFFICIENCY

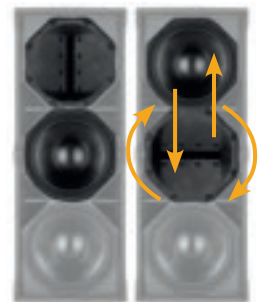
Following the TT+ no-compromise viewpoint, the TTL 4-A and the TTP 4-A are low distortion and 0° phase self-powered touring systems equipped with high efficiency class-D amplifier that deliver potent SPL reducing energy requirement.



p.n. 130.00.584 (90-240V)

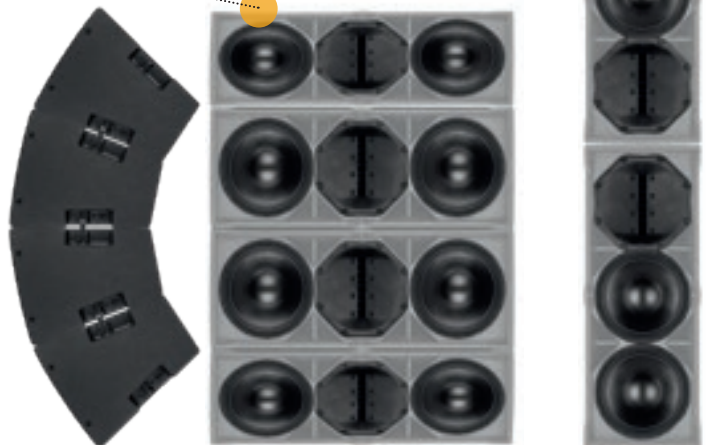
/ THE SOLUTION SPEAKER

The game-changing rigging solutions and the versatile transducers allow the speaker to be used alone for 100° x 25° homogeneous coverage or stacked/ flown in a column. The 90° rotatable waveguide can be moved from the upper to the central position - swapping the woofer, allowing the speaker to be arranged in constant curvature clusters with up to six modules.



/ VERTICAL COUPLING CONFIGURATION

/ CONSTANT CURVATURE ARRAY



RDNET ON BOARD

- 135 dB max SPL
- 2 x Class-D amplifiers, 1600 Watt RMS total power
- LF 2 x 10" neodymium woofer, 2.5" voice coil
- HF 1.5" neo compression driver 4.0" voice coil
- 100° x 25° coverage
- 45 - 20.000 Hz frequency range
- **FiRPHASE**
- 820x315,5x368,5 - 32.28x12.42x14.51 in (HxWxD)
- 25,5 kg / 56.22 lbs

P4

TTP 4-A



ACTIVE TWO-WAY POINT SOURCE MODULE

The TTP 4-A point source module delivers studio quality sound for highly demanding events indoors or outdoors for small to medium sized areas. Its design provides the audio engineer with the best tonal balance and intelligibility while maintaining an unobtrusive and adaptable form. It is the preferred sound set-up for stacked systems and when a wider dispersion is required. Offering all the advantages of TT+ technology, such as coherent directivity and a uniform level distribution, it is the preferred sound set-up for high quality suspended systems.

/ HANDLES

The TTL 4-A and TTP 4-A cabinet features two die-cast aluminium side handles with ergonomic rubber hand-grip and two recessed handles on the back.



/ TTP 4-A CLUSTER CONFIGURATION

/ TTL 4-A AND TTP 4-A RIGGING FLEXIBILITY

The compactness and lightweight of the system combined with top of class steel on board mechanics help during rigging operations as well as during transportation.



p.n. 130.00.573 (90-240V)



RDNET ON BOARD

- 134 dB max SPL
- 2 x Class-D amplifiers, 1600 Watt RMS total power
- LF 2 x 10" neodymium woofer, 2.5" voice coil
- HF 1.5" neo compression driver 4.0" voice coil
- 100° x 50° coverage
- 45 - 20.000 Hz frequency range
- **FIRPHASE**
- 820x315,5x368,5 - 32,28x12,42x14,51 in (HxWxD)
- 25,5 kg / 56.22 lbs

TT 20-CXA

ACTIVE HIGH DEFINITION STAGE MONITOR

The TT 20-CXA is a full range, high performance symmetrical monitor. The flat frequency response, the consistent coverage of 90°x60° and acoustic output make the TT 20-CXA the professional choice for any stage as a monitor or full range front of house system with steel pole mount. The compact size and very low profile are fundamental to a discrete appearance. With an exceptional impulse response the TT CXA series far exceeds the capabilities of conventional stage monitors. The cabinet is made of Baltic birch plywood and protected with a premium textured polyurea coating.



/ POLE MOUNT CAP

The RCF TT 20-CXA can be used as a traditional loudspeaker using the steel pole mount on the left side.



/ HANDLES & POLE MOUNT

The cabinets feature an aluminium top handle and a side pole mount. Both are designed to facilitate transport, positioning and loading operations.



/ RDNET INTEGRATION

The new TT 20-CXA amplifier integrates RDNet Input/Output in a single amplifier board.



p.n. 130.00.544 (220-240V) - 13000560 (115V)

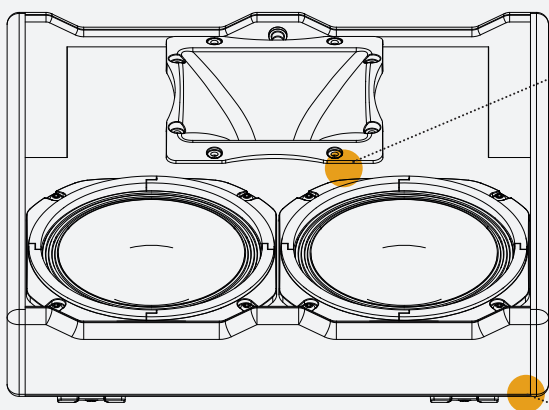


RDNET ON BOARD

- 131 dB SPL Max
- 1000 W RMS, three-way class D amplifier
- 60-20000 Hz Frequency Range
- 60° x 90° constant directivity coverage
- 2 x 8" neodymium Woofers, 2.5" voice coil
- Horn loaded 2.5" neodymium compression driver
- Symmetrical Design
- Multifunctional Cabinet
- **FiRPHASE**
- Onboard RDNet Control
- 320x485x450 mm - 12.6x19.1x17.7 in (HxWxD)
- 15,5 kg / 34.2 lbs



INSIDE VIEW



/ TOP QUALITY TRANSDUCERS

The high frequency section features a 60° x 90° horn-loaded 2,5" compression driver with constant directivity coverage angle. The Direct Drive technology provides exceptional sound quality, making the TT 20-CXA the right choice for medium to large-scale applications. The loudspeaker's low frequency section comprises two 8" high-power neodymium woofers in symmetrical configuration. The 2.5" voice coil and an innovative design ensure very high power handling.

/ AMPLIFIER AND DSP

The amplifier section features class-D dual switching power supply module, 700 W low frequency, 300 W high frequency. The onboard RDNet functionality includes remote monitoring, special custom-made equalizations and high pass, two-way position, high frequency distance correction and many other features. The embedded FIRPHASE filters achieve coherent musical sound without phase distortions.

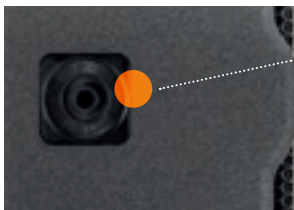


10

TT 10-A

TWO-WAY HIGH POWER PROFESSIONAL MONITOR

The RCF TT 10-A is the latest member of the TT+ family, containing 10" driver plus 1.7" compression driver. With high SPL and a small footprint, it is the perfect solution where high power is required from an unobtrusive enclosure in live sound, playback or monitoring, corporate events and broadcast studios. Despite its size and weight, the TT 10-A offers an incredible maximum SPL of 130 dB.



QUICK RIGGING

Innovative quick fit bracket socket for an easy set-up and stable rigging

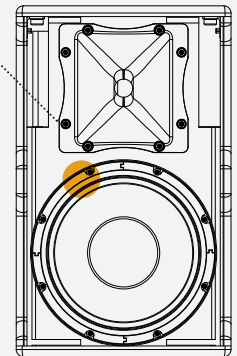


INSIDE VIEW

/ PRECISION AND POWER

The RCF TT 10-A low-mid frequency section employs a 10" neodymium magnet cone driver, while the high-frequency section is equipped with an efficient 1.7" diaphragm compression driver on a 90°x 60° horn.

Each transducer has been specifically designed for the application. The woofer provides large excursion and is very light weight.



The RCF TT 10-A on-board amplifier features 1000 watts RMS switching power supply module, 700 watt low frequency digital amplifier module, 300 watt high frequency digital amplifier module.



RDNET ON BOARD

p.n. 130.00.549 (220-240V)

p.n. 130.00.559 (115V)

- 130 dB SPL Max
- 1000W RMS 2 way Class-D Amplifier
- 60 - 20000 Hz Frequency Range
- 90° x 60° Constant Directivity Coverage
- 10" neodymium Woofer, 2.5" voice coil
- Horn loaded 1.7" Neodymium Compression Driver
- **FiRPHASE**
- RDNet remote monitoring and control
- Easy to install with built in rigging point
- Quick fit Bracket Socket
- 490x298,6x300 mm - 19,3x11,7x11,8 in (HxWxD)
- 12,5 kg / 27.6 lbs

TT 08-A II

TWO-WAY HIGH POWER PROFESSIONAL MONITOR

The RCF TT 08-A II is the most flexible and powerful tool in its class. It fulfills a number of applications, from live sound, to playback and monitoring, corporate events and broadcast studios. Though remarkably compact and lightweight, the TT 08-A II offers an incredible maximum sound pressure level of 128dB. Its performance efficiency is higher than many larger 10" speaker systems.



QUICK RIGGING

Innovative quick fit bracket socket for an easy set-up and stable rigging



The input section provides In/Out XLR connectors, system sensitivity control and 4 status LEDs. The onboard DSP provides linear phase FiRPHASE filters and crossover, system equalization, polarity control, fast limiter, RMS limiter and configuration control. Rigging is easy thanks to the two quick fit bracket sockets. The cabinets feature a steel pole mount cap and a forged aluminium handle on top with rubber handgrip.



FEATURE

/ MULTIPLE APPLICATIONS

Pole mount, top and bottom M10 suspension points, quick fit bracket side sockets: the TT 08-A II cabinet it is fully equipped for every application. One side of the cabinet presents a 35° angle, perfect to be used for monitoring.



RDNET ON BOARD

p.n. 130.00.547 (220-240V)
p.n. 130.00.558 (115V)

- 128 dB SPL Max
- 1000 W RMS 2 way Class-D Amplifier
- 65 - 20000 Hz Frequency Range
- 90° x 60° Constant Directivity Coverage
- 8" neodymium Woofer, 2.5" voice coil
- Horn loaded 1.7" neodymium compression driver
- **FiRPHASE**
- RDNet remote monitoring and control
- Easy to install with built in rigging point
- Quick fit bracket socket
- 450x279,7x270 mm - 17,7x11x10,6 in (HxWxD)
- 11 kg / 24.3 lbs

3112

E-MAX

E-MAX 3112

FULL RANGE HIGH POWER NEARFIELD SPEAKER

The full-range passive two-way RCF E-MAX series has been specifically designed as club systems for entertainment, to achieve the best nearfield quality, vocal coherence and a stable tonal balance even at high volume. The heavy-duty speaker cabinet is made of birch plywood coated with black textured epoxy. Featuring a 12" woofer with a 2.5" voice and a 1.0" compression driver with 1.4" voice coil. The LICC crossover design includes an electronic protection on high-frequency device. The rotatable 90°x70° horn and the available mounting accessories allow installation of the loudspeaker either vertically or horizontally in any environment and architectural constraint.



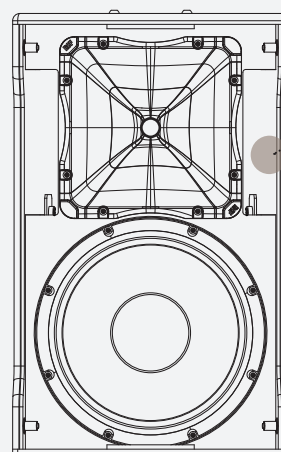
/ PERFECTLY TUNED CROSSOVER

The E MAX Series features a custom designed mid-freq shaping for close distance listening on a perfectly tuned crossover (1.8 kHz) to ensure the best frequency and phase response. The LICC crossover design includes an electronic protection on high frequency device.

INSIDE VIEW

/ HI FREQUENCY TRANSDUCERS

The 1.0" compression driver with 1.4" voice coil provides accurate and coherent response even at very high frequencies. The horn is rotatable, allowing installation of the loudspeaker either vertically or horizontally.



BASS
REFLEX

/ LOW FREQUENCY TRANSDUCER

The high power 12" woofer with a 2.5" voice coil is designed to provide excellent frequency response linearity with very low distortion.

- 129 dB SPL Max
- 350 W AES power rating
- 55 - 20000 Hz Frequency Range
- Heavy-duty birch plywood coated with black textured epoxy
- 1" Compression Driver, 12" Woofer Hi Resolution Transducers
- Perfectly Tuned Crossover
- 614x379x422 mm
24.17x14.92x16.61 in (HxWxD)
- 22 kg / 48.50 lbs

3110

E-MAX



E-MAX 3110

FULL RANGE HIGH POWER NEARFIELD SPEAKER

The full-range passive two-way RCF E-MAX series has been specifically designed as club systems for entertainment, to achieve the best nearfield quality, vocal coherence and a stable tonal balance even at high volume. The heavy-duty speaker cabinet is made of birch plywood coated with black textured epoxy. Featuring a 10" woofer with a 2.5" voice and a 1.0" compression driver with 1.4" voice coil. The LICC crossover design includes an electronic protection on high-frequency device. The rotatable 90°x70° horn and the available mounting accessories allow installation of the loudspeaker either vertically or horizontally in any environment and architectural constraint.

/ COMPONENT SAFETY

The LICC crossover design includes an electronic protection on high frequency device.



/ FRONT GRILLE

A strong powder-coated metal grille protects the front and an acoustically transparent foam backing on the inside of the grille ensures protection from dust and humidity. The front RCF logo is easily rotatable.



/ RIGGING POINTS

Nineteen rigging points: Thirteen M10 and six M8. Pole mount on the bottom.



All E-Max Series cabinets are built in heavy-duty birch plywood coated with black textured epoxy. A strong powder-coated metal grille protects the front, and an acoustically transparent sound foam backing on the inside of the grille ensures protection from dust and humidity.

“ *powerful entertainment* ”

- 128 dB SPL Max
- 300 W AES power rating
- 60 – 20000 Hz Frequency Range
- Heavy-duty birch plywood coated with black textured epoxy
- 1" Compression Driver, 10" Woofer Hi Resolution Transducers
- Perfectly Tuned Crossover
- 500x305x383 mm
19.68x12x15.08 in (HxWxD)
- 17.5 kg / 38.58 lbs

VSA

VERTICAL STEERABLE ARRAYS

VSA 2050 II | VSA 1250 II | VSA 850 II

The VSA II system allows to address the audio signal exactly to the listening area, avoiding the radiation of the acoustic energy to ceilings and empty floors, thus not introducing bad reflections that would affect speech intelligibility, mainly in critical environments with high reverberation time. VSA II offers a precise directivity and control to give high intelligibility performance with wide frequency response, high-dynamics and coherence at distance. Tilting and beaming are not to be affected by the steering. The horizontal coverage is very wide and not impaired by discontinuities.

Thanks to the column power, the accurate speaker design and the high efficiency of the digital technology the VSA is able to obtain a very long coverage, up to 30 meters (VSA 2050) preserving a smooth uniform horizontal coverage as well.



/ POWERFUL TRANSDUCERS

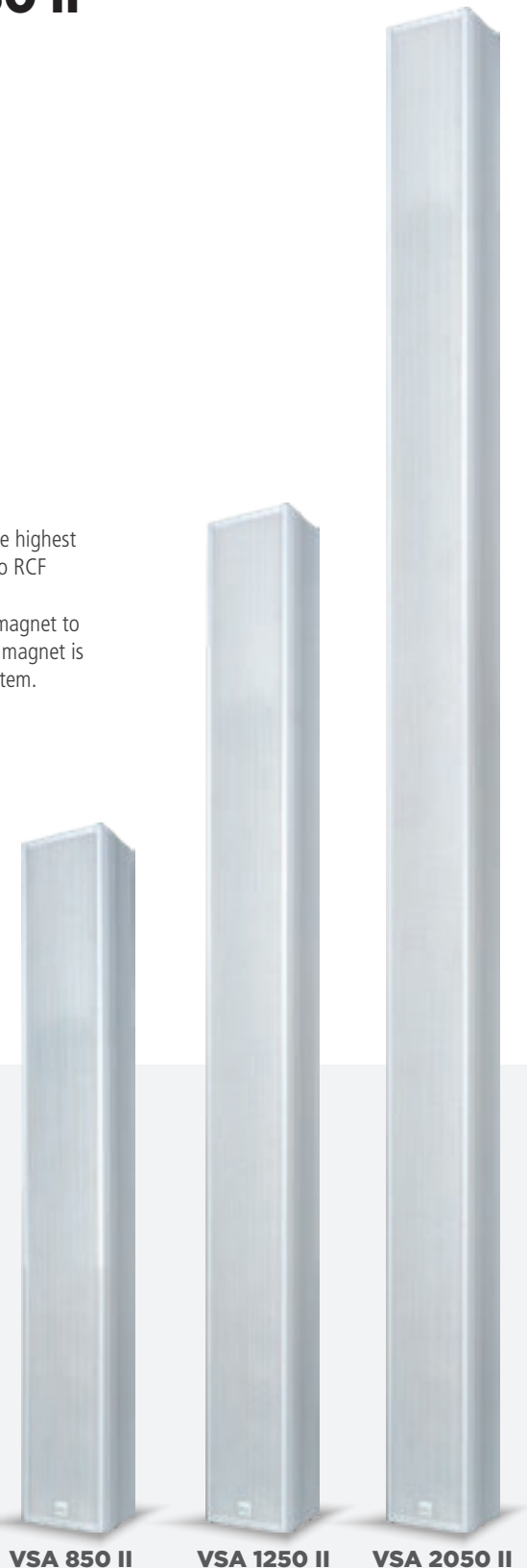
The state of the art transducer developed for the VSA II offers the highest possible intelligibility and wider frequency response, according to RCF philosophy.

A 1,4 tesla flux density is the result of the massive neodymium magnet to get an incredible mid frequency dynamic range. The neodymium magnet is very lightweight and helps to compact the size of the overall system.

/ ELECTRONIC TECHNOLOGY

The powerful DSP controls directly the 20 Class-D 50 W power amplifiers, able to drive the 20 transducers with an optimal headroom. The amplification circuit includes several protections and controls to operate in safe mode.

- 96 dB (2050) - 94 dB (1250) - 93 dB (850) Max SPL
- 50 W Class D power amplifiers
(VSA 2050 II: 20 | VSA 1250 II: 12 | VSA 850 II: 8)
- 48 kHz 32 bit processing
- Vertical Dispersion controlled up to 10° till 300 Hz
- Power Supply 115/230Vac (600VA); 24Vdc
- Extruded aluminium body
- Ceramic block terminals and thermal fuse on 0dB balanced priority input
- Standard installation accessories included
- Easy and fast configuration
- Indicators and control for EN 60849 monitoring facility
- Custom RAL colors available



VSA 850 II

VSA 1250 II

VSA 2050 II



VSA 2050 II

p.n. 131.00.022 (220-240V)
p.n. 131.00.023 (115V)

DIMENSIONS (W x H x D)	125 x 2070 x 97 mm 4.9" x 81.5" x 3.8"	VSA 1250 II p.n. 131.00.025 (220-240V) p.n. 131.00.026 (115V) 125 x 1340 x 97 mm 4.9" x 52.7" x 3.8"	VSA 850 II p.n. 131.00.028 (220-240V) p.n. 131.00.029 (115V) 125 x 980 x 97 mm 4.9" x 38.5" x 3.8"
WEIGHT	19 Kg / 41.8 lbs	14 Kg / 30.8 lbs	10 Kg / 22 lbs
COLOR	Whyte or customizable	Whyte or customizable	Whyte or customizable
CABINET	Powder coated aluminium extrusion	Powder coated aluminium extrusion	Powder coated aluminium extrusion
HARDWARE	2 x speaker wall mounting flange	2 x speaker wall mounting flange	2 x speaker wall mounting flange

/ ENCLOSURE

The unobtrusive and robust design starts from the enclosure. The extruded aluminium offers a very limited architectural impact, reliability, lightweight and simple installing operations. The standard colour is white RAL 9003. Other colours are available on request (depending on the size of the projects). The aluminium body allows a modular design approach and a uniform heat dissipation. The front grille is transparent to sound and has been designed to be elegant. The installation is particularly simple thanks to the drilling template on the wooden package and the light weight. Additional brackets are available on request if the column has to be oriented horizontally.



**RDNET
ON BOARD**

VSA SMART RC

The VSA-RC is an easy way to control the VSA speakers through the VSA Remote App available on iOS or Android. The following data are configurable on each VSA through the VSA-RC remote control:

- Select the proper beaming and tilting configuration
- Delay in metres
- Voice/music optimization filters
- Polarity
- Mute
- Volume
- Stand-By



(p.n. 13160330)

RELATED ACCESSORIES

SWM-BR VSA II

(p.n. 133.60.410)

Pair of horizontal brackets for mounting one VSA on the wall with an inclination up to 60°.



The I/R receiving diode is recessed, and its directivity coverage has been narrowed to receive I/R commands just from the dedicated remote located in front of the column axis.

Thanks to this, if two columns are one close to the other, there is no risk to drive two receivers at the same time.

MR

MONITOR SERIES

MR 50

TWO-WAY BASS REFLEX SPEAKER 60 W

- Ideal for speech and music reproduction
- High quality 1" voice coil woofer (5") and 0.8" voice coil dome tweeter
- Passive filter 12/12 dB/octave, with crossover frequency 3kHz
- Built-in Low Inductance Compensated Crossover, with high frequency dynamic protection
- Bass reflex @65 Hz
- Low impedance or constant voltage lines operating mode
- Body in self-extinguishing plastic
- Wall mount support included
- Available in black and white

MR 40

TWO-WAY REFLEX SPEAKERS 40 W

- Ideal for speech and music reproduction
- High quality 1" voice coil woofer (4") and 0.8" voice coil dome tweeter
- Passive filter 12/12 dB/octave, with crossover frequency 3kHz
- Built-in Low Inductance Compensated Crossover, with high frequency dynamic protection
- Bass reflex @80 Hz
- Low impedance or constant voltage lines operating mode
- Body in self-extinguishing plastic
- Wall mount support included
- Available in black and white



/ HIGH QUALITY COMPACT SPEAKER SYSTEMS

RCF Monitor Series is a range of speakers designed to deliver uncompromised audio performance and high reliability in fixed installations. All Monitor models have been designed to blend with any décor and deliver deep bass, smooth midrange and finely-detailed high frequency response.

/ INSTALLATION

A wall mounting support is provided with each speaker, and a range of optional accessories increases the installation flexibility.



RELATED ACCESSORIES

MA 3

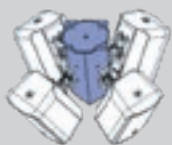
WALL MOUNT BRACKET

Bracket for mounting one Monitor speaker on the wall

13360367 MA 3B (black)
13360368 MA 3W (white)

MA 4X

CEILING MOUNT BRACKET



Bracket for installing four Monitor speakers in cluster configuration

13360009

PART NUMBERS

MR 50	13100038	(black)
MR 50T	13100039	(black with line transformer)
MR 50 W	13100040	(white)
MR 50T W	13100041	(white with line transformer)
MR 40	13100034	(black)
MR 40T	13100035	(black with line transformer)
MR 40 W	13100036	(white)
MR 40T W	13100037	(white with line transformer)

p.n. refers to a couple of speakers.

SPECIFICATIONS

MR 50

MR 40

ACOUSTICAL

Frequency response (-10 dB):	60 Hz ÷ 20.000 Hz	70 Hz ÷ 20.000 Hz
Horizontal coverage angle (-6 dB):	110°	110°
Vertical coverage angle (-6 dB):	100°	100°
System sensitivity (1 W @ 1 m)	87 dB	86 dB
Max SPL (rated power @ 1 m):	107 dB	105 dB
Nominal impedance	8 Ohm	8 Ohm
Power handling (RMS):	60 W	40 W
Power handling (PEAK):	240 W	160 W
Recommended amplifier:	120 W	80 W
Crossover frequency:	3 kHz	3 kHz
Low frequencies:	5" woofer with 1" voice coil	4" woofer with 1" voice coil
High frequencies:	0.8" voice coil dome tweeter	
Connectors:	Euroblock removable screw terminals	
Line transformer:	70 / 100 V (MR 50T - MR 50TW - MR 40T - MR 40TW)	
Transformer power selection:	40 W - 20 W - 10 W - 5 W	20 W - 10 W - 5 W - 2.5 W
Passive filter:	12/12 dB/octave	12/12 dB/octave
Bass reflex	65 Hz	80 Hz
HF protection:	Dynamic (LICC)	Dynamic (LICC)

PHYSICAL

Cabinet:	Self-extinguishing plastic	Self-extinguishing plastic
Grill:	Painted zincked metal	Painted zincked metal
Hardware:	Wall mount support	Wall mount support
Rigging inserts:	4 x M6	4 x M6
Dimensions (H x W x D):	270 x 187 x 172 mm 26.77" x 15.94" x 13.58"	216 x 154 x 136 mm 8.50" x 6.06" x 5.35"

/ QUALITY AND DESIGN

Quality components and careful acoustic design make the Monitor Series the perfect speakers for listening in the most demanding applications, ideal for speech and music reproduction in business and A/V applications, bars & restaurants, hospitalities, recreational facilities, theme parks, shopping malls and many others.

There are eight different models in the Monitor Series, each of them designed for a specific range of applications:

- two different size and power;
- with and without line transformer;
- black and white colour.

High quality transducers (1" voice coil woofers and 0.8" voice coil dome tweeter), combined with RCF Low Inductance Compensated Crossover (LICC), assure exceptional audio performance and long-term reliability.



www.rcf.it

HEADQUARTERS:

RCF S.p.A. Italy
tel. +39 0522 274 411
e-mail: info@rcf.it

RCF UK
Int. +44 (0) 1702 800846
e-mail: info@rcfaudio.co.uk

RCF France
tel. +33 6 24 15 81 76
e-mail: france@rcf.it

RCF Germany
tel. +49 2203 925370
e-mail: germany@rcf.it

RCF Spain
tel. +34 91 817 42 66
e-mail: info@rcfaudio.es

RCF Benelux
tel. +49 (0) 2203 9253724
e-mail: benelux@rcf.it

RCF USA Inc.
tel. +1 732-9026100
e-mail: info@rcf-usa.com